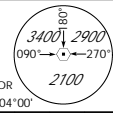


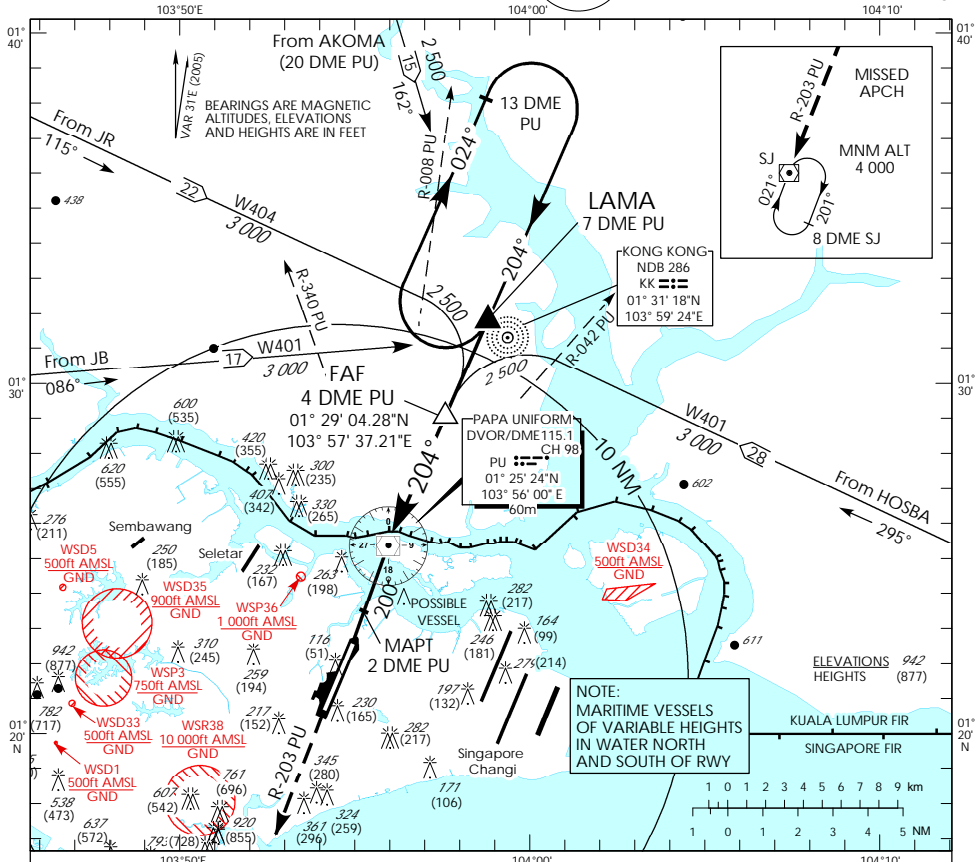
**INSTRUMENT  
APPROACH  
CHART**

**AERODROME ELEV 65ft**  
HEIGHT RELATED TO  
AD ELEV - 65ft



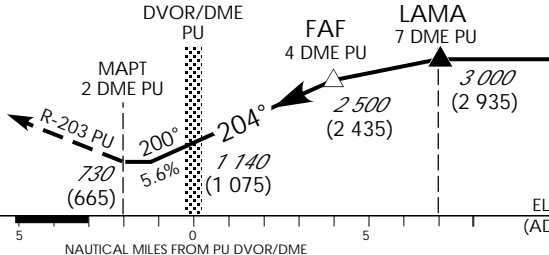
APP 120.3  
119.9  
TWR 118.05

**SINGAPORE/  
PAYA LEBAR  
PU DVOR/DME  
RWY 20**



Transition Level : FL 130  
Transition Alt : 11 000

**MISSED APPROACH**  
Climb to 4 000ft on R-203 PU to SJ DVOR/DME and hold South right turn 021° inbound or AS DIRECTED BY ATC



OCA (OCH)				
Category of Aircraft	A	B	C	D
Straight-in	730 (665)			
Distance	3 DME	2 DME	1 DME	PU DVOR/DME
Altitude (Height)	2160 (2095)	1820 (1755)	1480 (1415)	1140 (1075) / 800 (735)
Speed	knots	70	120	150 / 185
FAF - MAPT 6nm	min : s	5 : 09	3 : 00	2 : 24 / 1 : 57
Rate of descent/GS	ft/min	370	635	795 / 980