

Contact

Post:

REPUBLIC OF SINGAPORE
AERONAUTICAL
INFORMATION SERVICES
CIVIL AVIATION AUTHORITY
OF SINGAPORE
SINGAPORE CHANGI
AIRPORT
P.O. BOX 1, SINGAPORE
918141

Tel: (65) 6595 6051

AFS: WSSSYNYX

Fax: (65) 64410221

Email: caas_singaporeais@caas.gov.sgURL: www.caas.gov.sgURL: <https://fpl-1.caasaim.gov.sg>**AIP Supplement for
Singapore****AIP SUP
127/2017****Effective from 01 FEB 2018
/ 11 FEB 2018
Published on 27 DEC 2017****FLYING DISPLAYS IN CONJUNCTION WITH THE SINGAPORE AIRSHOW 2018
EXHIBITION FROM THURSDAY 01 FEBRUARY TO SUNDAY 11 FEBRUARY 2018****1 INTRODUCTION**

1.1 This AIP Supplement supersedes AIP Supplement 092/2017 published on 07 September 2017 due to increase in duration for Singapore Changi Airport and airspace closure timings during Singapore Airshow 2018.

1.2 Flying displays will be conducted during the Singapore Airshow 2018 Exhibition from 06 to 11 February 2018. Prior to the Exhibition, practices and rehearsals will be conducted from 01 to 05 February 2018.

1.3 During the periods of practices, rehearsals and flying displays, Singapore Changi Airport and the airspace around the airport will be closed to non-participating aircraft.

2 RESTRICTIONS AND CLOSURES OF SINGAPORE CHANGI AIRPORT AND AIRSPACE

2.1 The revised details of the periods of Singapore Changi Airport and airspace closures are shown in Annex A.

2.2 The airspace to be closed is bounded by the following coordinates:

012517N 1035814E, thence clockwise along the Singapore / Kuala Lumpur FIR boundary, 012017N 1040522E, 011707N 1035618E, 011835N 1035658E, thence anti-clockwise along the eastern coastline of Singapore, 012254N 1035707E and 012517N 1035814E.

2.3 The vertical limits of airspace closure is from Ground / Sea Level up to 10,000ft AMSL. Please refer to Annex B for the chart showing the area of the airspace closure.

2.4 Due to the extended duration of closure timings, it is anticipated that many flights will arrive at and depart from Singapore Changi Airport shortly before and after each airport and airspace closure period. To avoid the possibility of flights being delayed until after the airport and airspace are re-opened, aircraft operators are advised to plan their flights to arrive or depart Singapore Changi Airport well before or after the closure times.

2.5 Pre-flight fuel planning should also take into account high possibilities of airborne delay due to congestion and aircraft operators are advised to have sufficient fuel for at least 20 minutes of holding.

**3 AIR TRAFFIC FLOW MANAGEMENT (ATFM) MEASURES FOR FLIGHTS ARRIVING AT
SINGAPORE CHANGI AIRPORT**

3.1 ATFM measures, where necessary, will be in place to regulate the air traffic flow to match the prevailing capacity prior to and after the re-opening of Singapore Changi Airport. Please refer to AIP Singapore ENR 1.9 for details on ATFM procedures.

**4 TACTICAL ATC MEASURES PRIOR TO AND AFTER CLOSURES TO REDUCE AIRBORNE
DELAY FOR FLIGHTS ARRIVING SINGAPORE CHANGI AIRPORT**

4.1 For the last 15 minutes prior to the closures of Singapore Changi Airport, priority will be given to Changi arrivals to land on both runways.

4.2 For the first 15 minutes following the re-opening of Singapore Changi Airport, priority will be given to Changi arrivals to land on both runways while departures will depart on Runway 02C/20C only. Segregated mode of operations will resume thereafter.

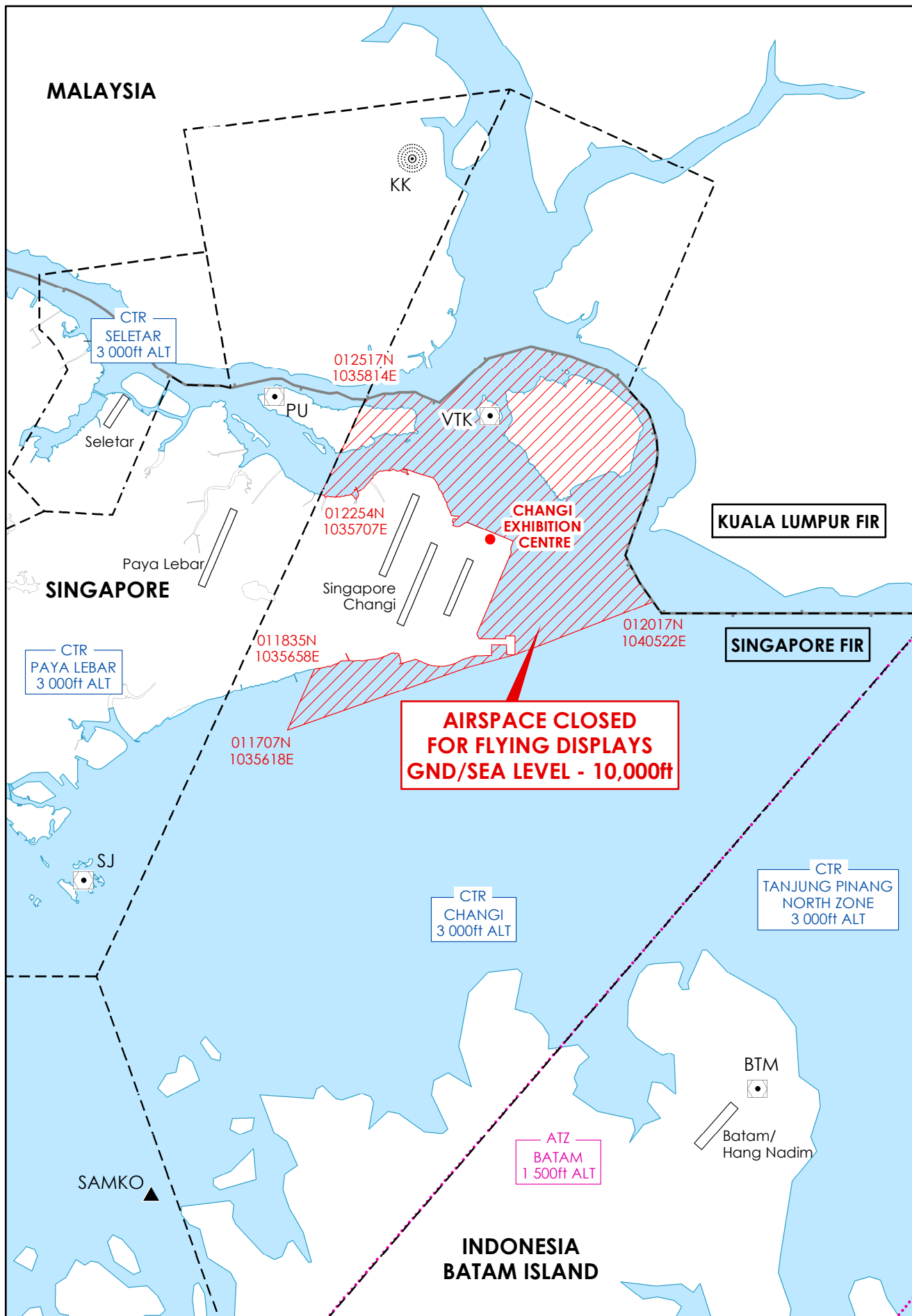
**Closure of Singapore Changi Airport and airspace during the
Singapore Airshow 2018 Exhibition Flying Displays**

Details of the period of closures of Singapore Changi Airport and airspace are shown below:

Type of Activity		Day / Date	Timing (UTC)
a)	Practices	Thursday, 01 Feb 18	0230 – 0310
		Friday, 02 Feb 18	0230 – 0325
		Saturday, 03 Feb 18	0230 – 0345
b)	Combined Rehearsal	Sunday, 04 Feb 18	0230 – 0350
		Monday, 05 Feb 18	0230 – 0325
c)	Flying Displays	Tuesday, 06 Feb 18	0430 – 0555
		Wednesday, 07 Feb 18	0330 – 0455
		Thursday, 08 Feb 18	0330 – 0420
		Friday, 09 Feb 18	NIL
		Saturday, 10 Feb 18	0330 – 0415
			0630 – 0715
		Sunday, 11 Feb 18	0330 – 0410
			0630 – 0715

PAGE INTENTIONALLY LEFT BLANK

SINGAPORE AIRSHOW 2018 EXHIBITION AIRSPACE CLOSURE FOR FLYING DISPLAYS



PAGE INTENTIONALLY LEFT BLANK