

Contact

Post:

REPUBLIC OF SINGAPORE
AERONAUTICAL
INFORMATION SERVICES
CIVIL AVIATION AUTHORITY
OF SINGAPORE
SINGAPORE CHANGI
AIRPORT
P.O. BOX 1, SINGAPORE
918141

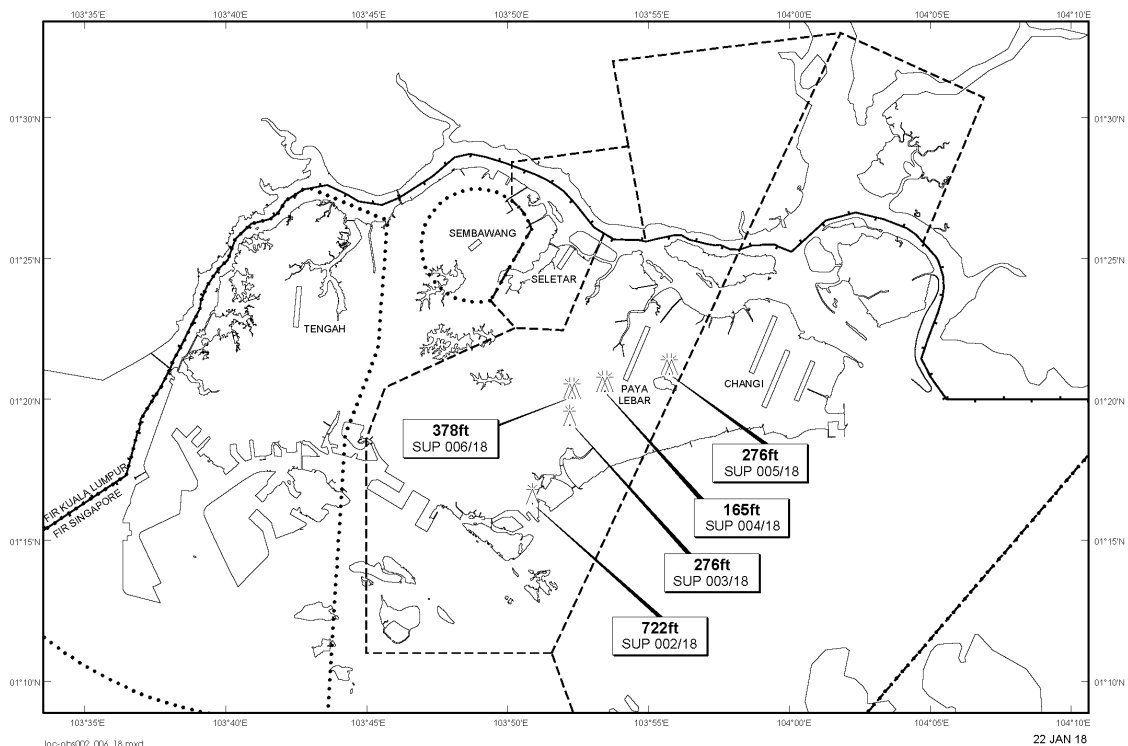
Tel: (65) 6595 6051

AFS: WSSSYNYX

Fax: (65) 64410221

Email: caas_singaporeais@caas.gov.sgURL: www.caas.gov.sgURL: <https://fpl-1.caasaim.gov.sg>**AIP Supplement for
Singapore****AIP SUP
002/2018****Effective from 31 JAN 2018****/ 30 JUN 2018****Published on 22 JAN 2018****PAYA LEBAR AIRPORT – LUFFER CRANE**

Between 1801312200/1806301559 one luffer crane, height 722ft AMSL, erected at 011639N 1035053E (bearing 214.9 degrees, distance 5.7nm from Paya Lebar ARP - within Paya Lebar Control Zone). Luffer crane marked and lighted at night. (NOTAM A0211/18 dated 17/01/18 is hereby superseded.)

LOCATION OF OBSTACLES

PAGE INTENTIONALLY LEFT BLANK