

Contact

Post:

REPUBLIC OF SINGAPORE
AERONAUTICAL
INFORMATION SERVICES
CIVIL AVIATION AUTHORITY
OF SINGAPORE
SINGAPORE CHANGI
AIRPORT
P.O. BOX 1, SINGAPORE
918141

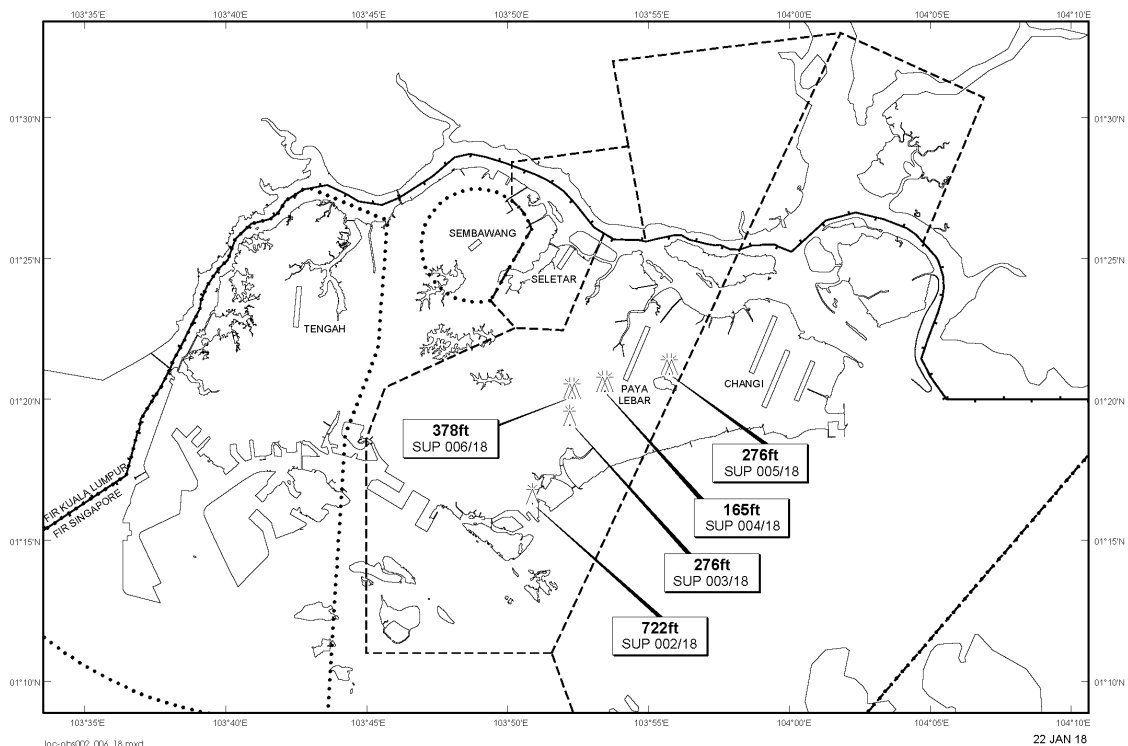
Tel: (65) 6595 6051

AFS: WSSSYNYX

Fax: (65) 64410221

Email: caas_singaporeais@caas.gov.sgURL: www.caas.gov.sgURL: <https://fpl-1.caasaim.gov.sg>**AIP Supplement for
Singapore****AIP SUP
003/2018****Effective from 22 JAN 2018****/ 31 DEC 2019****Published on 22 JAN 2018****PAYA LEBAR AIRPORT – LUFFER CRANE**

WIE/1912311559 one luffer crane, height 276ft AMSL, erected at 011926N 1035212E (bearing 226.0 degrees, distance 2.7nm from Paya Lebar ARP - within Paya Lebar Control Zone). Luffer crane marked and lighted at night. (NOTAM A0024/18 dated 03/01/18 is hereby superseded.)

LOCATION OF OBSTACLES

PAGE INTENTIONALLY LEFT BLANK