

**Contact**

Post:

REPUBLIC OF SINGAPORE  
AERONAUTICAL  
INFORMATION SERVICES  
CIVIL AVIATION AUTHORITY  
OF SINGAPORE  
SINGAPORE CHANGI  
AIRPORT  
P.O. BOX 1, SINGAPORE  
918141

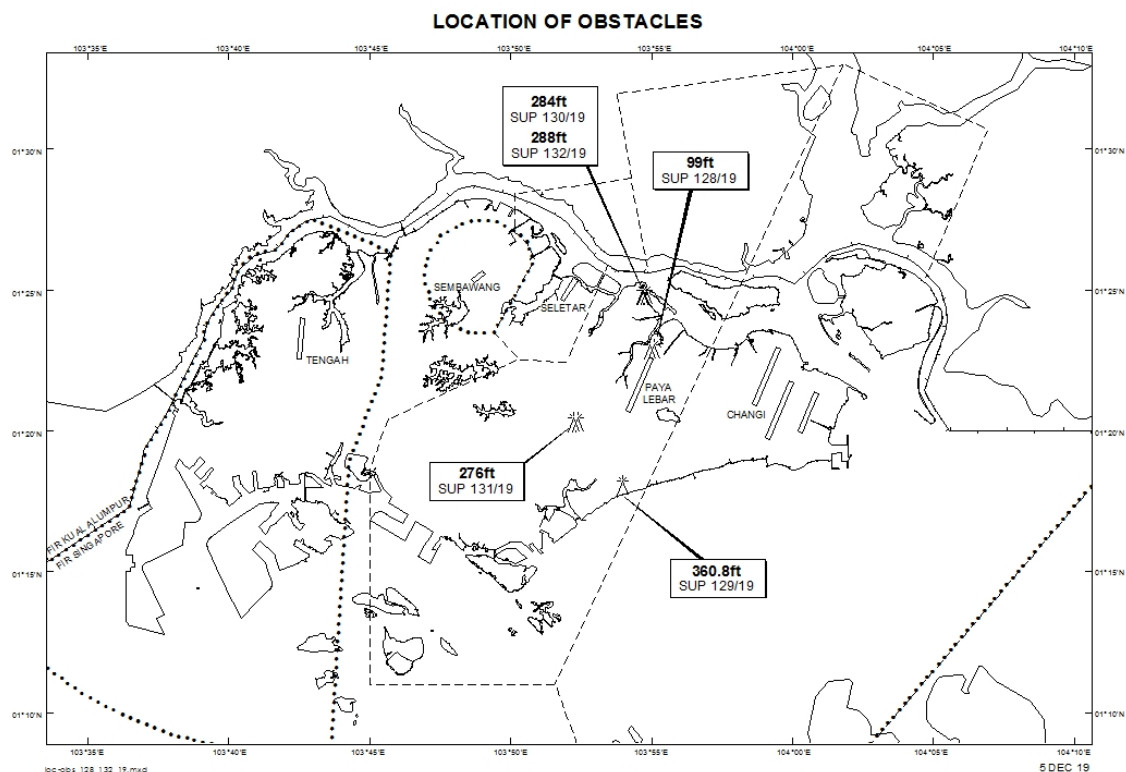
Tel: (65) 6422 7036

AFS: WSSSYNYX

Fax: (65) 64410221

Email: [caas\\_singaporeais@caas.gov.sg](mailto:caas_singaporeais@caas.gov.sg)URL: [www.caas.gov.sg](http://www.caas.gov.sg)URL: <https://aim-sg.caas.gov.sg>**AIP Supplement for  
Singapore****AIP SUP  
128/2019****Effective from 05 DEC 2019****/ 21 NOV 2020****Published on 05 DEC 2019****PAYA LEBAR AIRPORT – OBSTACLES**

WIE/2011211559 two piling rigs and two crawler cranes, height 99ft AMSL, erected at 012255N 1035500E (bearing 28.0 degrees, distance 1.78nm from Paya Lebar ARP - within Paya Lebar Control Zone). Obstacles marked and lighted at night. (NOTAM A4684/19 dated 20/11/19 is hereby superseded.)



*PAGE INTENTIONALLY LEFT BLANK*