

Contact

Post:

REPUBLIC OF SINGAPORE
AERONAUTICAL
INFORMATION SERVICES
CIVIL AVIATION AUTHORITY
OF SINGAPORE
SINGAPORE CHANGI
AIRPORT
P.O. BOX 1, SINGAPORE
918141

Tel: (65) 6422 7036

AFS: WSSSYNYX

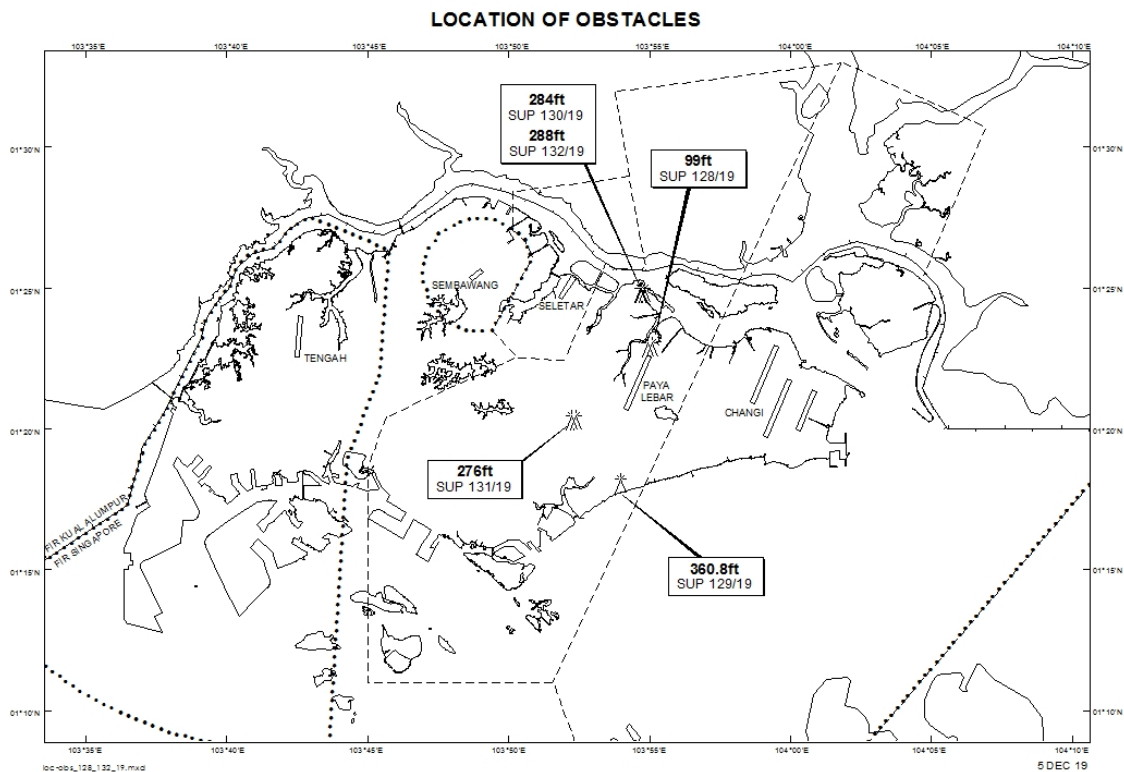
Fax: (65) 64410221

Email: caas_singaporeais@caas.gov.sgURL: www.caas.gov.sgURL: <https://aim-sg.caas.gov.sg>**AIP Supplement for
Singapore****AIP SUP
129/2019**

**Effective from 05 DEC 2019
/ 20 NOV 2020
Published on 05 DEC 2019**

PAYA LEBAR AIRPORT – CRANES

WIE/2011201559 one saddle crane and two luffer cranes, height 360.8ft AMSL, erected at 011803N 1035358E (bearing 183.5 degrees, distance 3.31nm from Paya Lebar ARP - within Paya Lebar Control Zone). Cranes marked and lighted at night. (NOTAM A4681/19 dated 19/11/19 is hereby superseded.)



PAGE INTENTIONALLY LEFT BLANK