



Ramp Supervisor

SARAVANAN KANNANDAN

**DUTY MANAGER, RAMP OPERATIONS
SATS**

13 YEARS IN AVIATION

Job description

Saravanan is responsible for all the ramp activities in Changi Airport Terminal 1. He ensures that all aircraft under his charge are loaded safely, correctly and in a timely manner, with the correct baggage, cargo and mail. He also ensures that everyone follows standard operating procedures and works safely.

As a Duty Manager, Saravanan identifies areas that can be improved and pre-empts issues that may escalate into problems. He will then troubleshoot and provide solutions to minimise disruption to operations.

A day at work

I first check the list of flights under my watch, and deploy teams to prepare for the arrival and departure of flights. Throughout my entire shift, I work closely with my team and airlines to ensure that flights arrive and depart safely and on time.

If the loading officers encounter problems while loading the aircraft, I will head over and attend to the problem. Based on the situation, I then make decisions, to enable the flight to depart on time, or at least minimise any potential flight delays.

I am constantly on the lookout for ways to make our work area a safe and conducive

environment to work in. I work closely with our management and the airport authorities on areas for improvement.

Why I love my job

I have always loved planes, and this job allows me to work closely with them. While the work can be challenging as it demands precision, it gives me great job satisfaction, especially when I do my job well and when flights depart on time.

I do my best to help staff resolve issues when they encounter problems at work. When more staff approach me for help, I am happy as it shows that they trust me and know that I can help them.

How I got into aviation

I was fascinated by planes, and would read to learn more about them. I loved anything to do with planes. When I saw that SATS was hiring, I immediately applied!

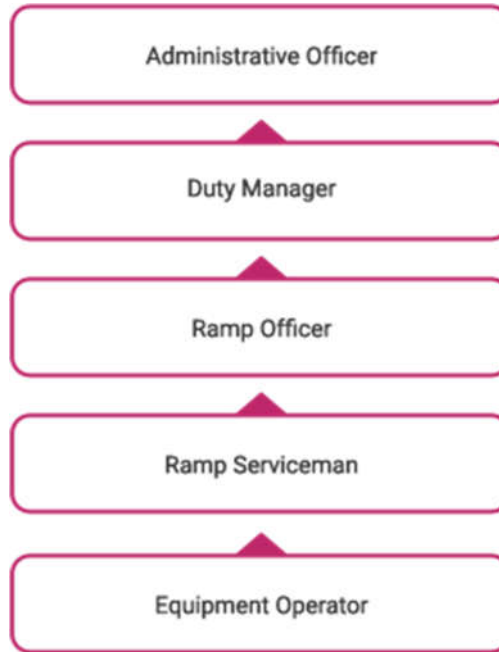
Personal qualities needed

You need to be confident, hardworking and have the ability to troubleshoot and make decisions under pressure. You also need to place strong emphasis on safety in your work.

Entry requirements

To join SATS as an Equipment Operator, you should have the ability to read, write and communicate in English, be at least 21 years old, and be medically fit with no colour blindness. You should also possess a valid Class 3 or Class 4 driving license.

Possible career progression



FIND OUT MORE -> [HTTPS://WWW.SATS.COM.SG/](https://www.sats.com.sg/)