

Contact Post: REPUBLIC OF SINGAPORE AERONAUTICAL INFORMATION SERVICES Civil Aviation Authority of Singapore 60 Airport Boulevard, Changi Airport Terminal 2, #04-01 Singapore 819643 Tel: (65) 6955 0400 Fax: (65) 6441 0221 AFS: WSSSYNYX Email: caas_singaporeais@caas.gov.sg URL: https://www.caas.gov.sg URL: https://aim-sg.caas.gov.sg	AIP Supplement for Singapore  Civil Aviation Authority of Singapore	AIRAC AIP SUP 068/2026 Effective from 14 MAY 2026 to 01 OCT 2026 Published on 02 APR 2026
---	--	---

SINGAPORE CHANGI AIRPORT – TEMPORARY CLOSURE AT TAXIWAY W9 AND JUNCTION OF TAXIWAY W9, TAXIWAY W AND TAXIWAY R

1 INTRODUCTION

1.1 This AIRAC AIP Supplement informs airline operators and pilots of the temporary closure at Taxiway W9 and the junction of Taxiway W9, Taxiway W and Taxiway R, in Singapore Changi Airport, from **14 May 2026, 1730UTC to 01 October 2026, 2130UTC**.

2 DETAILS ON THE CLOSURE OF TAXIWAY W9 AND JUNCTION OF TAXIWAY W9, TAXIWAY W AND TAXIWAY R

2.1 To facilitate upcoming construction work activities, Taxiway W9 and the junction of Taxiway W9, Taxiway W and Taxiway R will be closed.

2.2 Please refer to **Appendix A** for the enlarged location plan of the closed section at Taxiway W9 and the junction of Taxiway W9, Taxiway W and Taxiway R and **Appendix B** for a visualisation of the closed section.

3 CONCLUSION

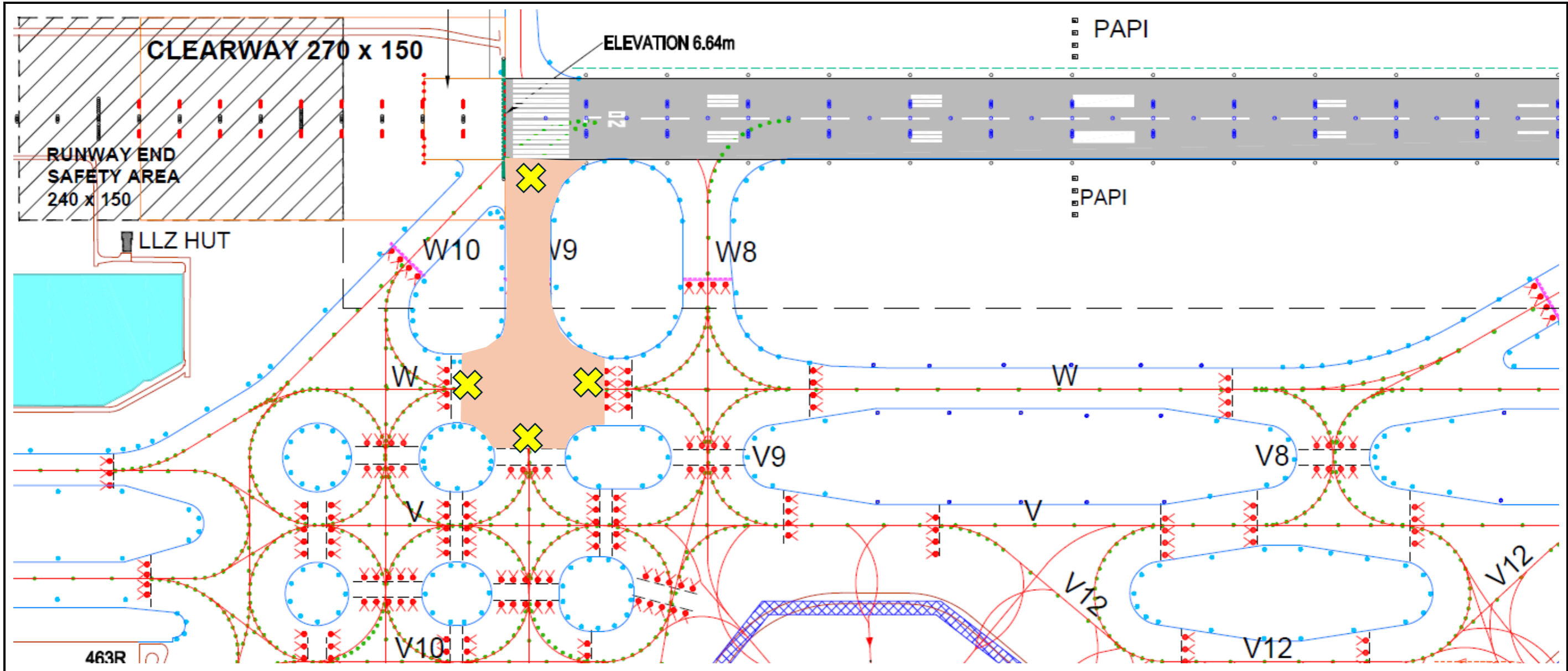
3.1 Any change to the contents of this AIRAC AIP supplement will be notified through NOTAM.

Enlarged Location Plan of Closed Section at TWY W9, W and R - Appendix A

Visualisation of TWY W9 and Junctions of TWY W9, W and R Closure - Appendix B

Intentionally Left Blank

Enlarged Location Plan of Closed Section at
Taxiway W9 and Junction of Taxiway W9, Taxiway W and Taxiway R, Singapore Changi Airport



Legend

- Taxiway W9 and Junction of Taxiway W9, W and R closed

Publication Date: 02 April 2026

Effective Date: 14 May 2026

Intentionally Left Blank

Visualisation of Taxiway W9 and Junction at Taxiway W9, Taxiway W and Taxiway R Closure,
Singapore Changi Airport

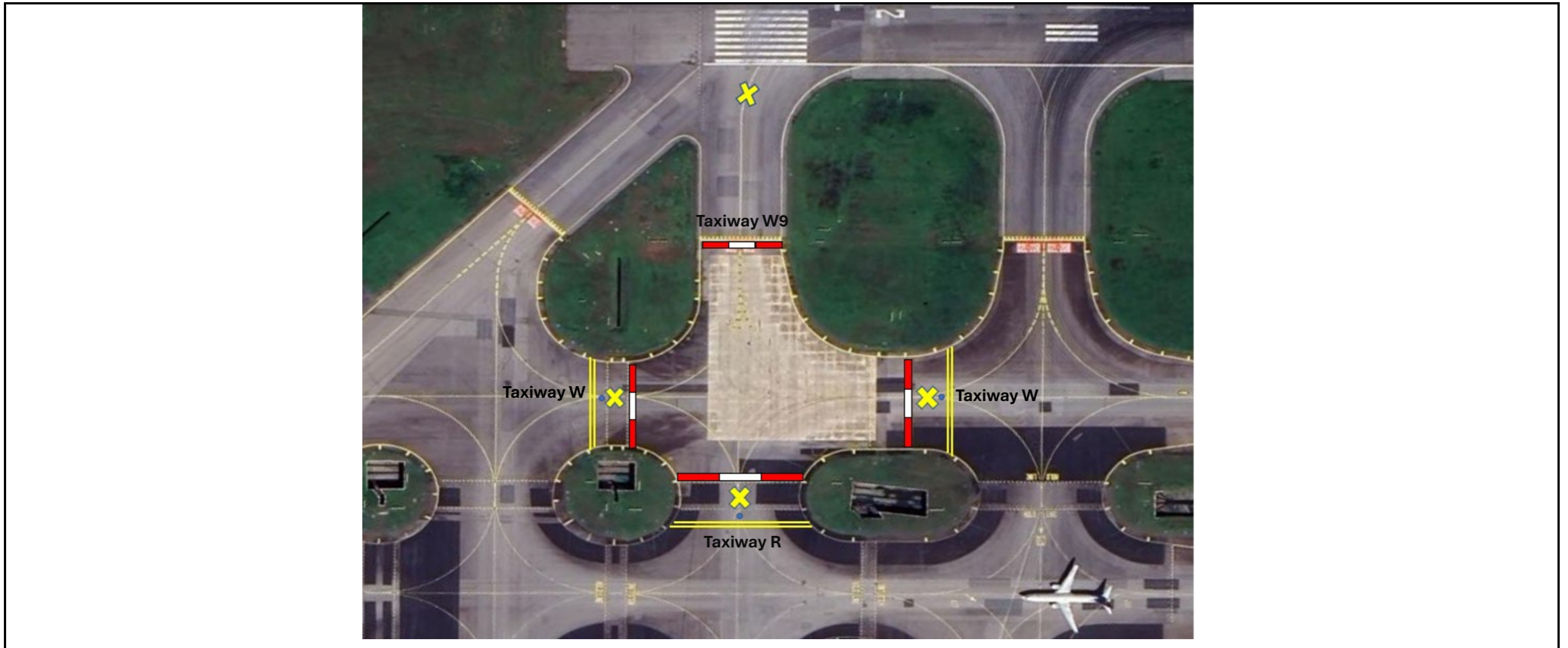






Diagram for illustration purpose only and not to scale

Legend

-  Unserviceability Marker
-  Taxiway Closed Marking
-  Taxi Side Strip Marking
-  Taxiway Edge Marker

Publication Date: 02 April 2026

Effective Date: 14 May 2026

Intentionally Left Blank