

**Contact**

Post:

REPUBLIC OF SINGAPORE  
AERONAUTICAL  
INFORMATION SERVICES  
CIVIL AVIATION AUTHORITY  
OF SINGAPORE  
SINGAPORE CHANGI  
AIRPORT  
P.O. BOX 1, SINGAPORE  
918141

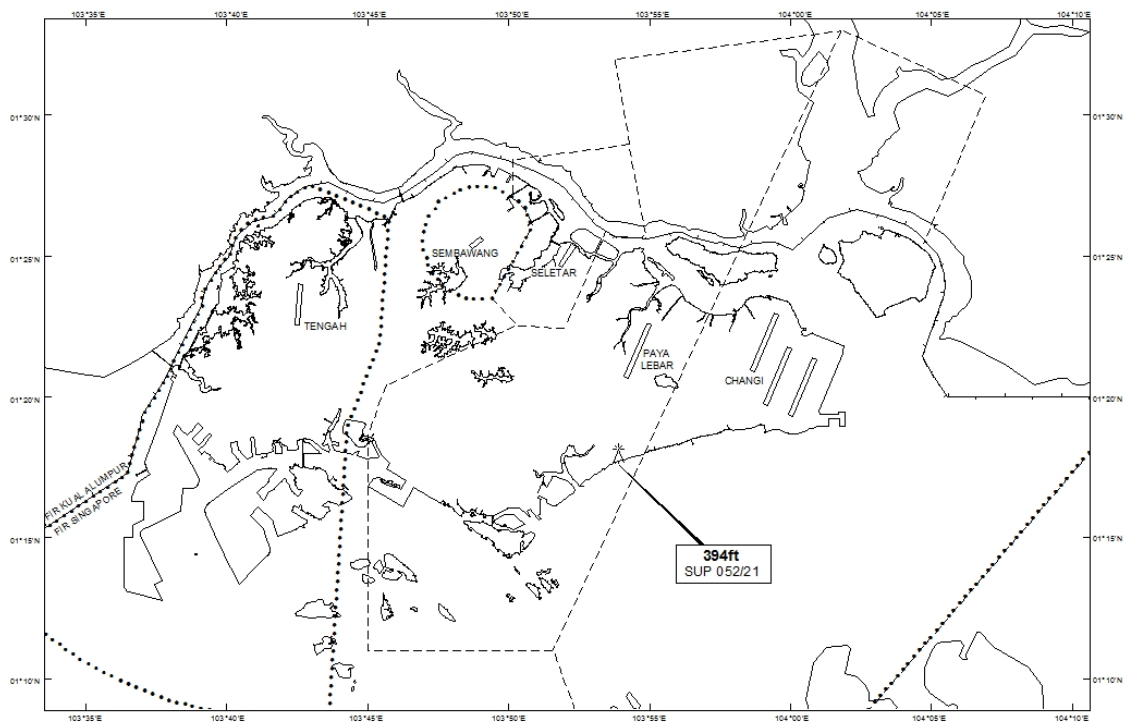
Tel: (65) 6422 7036

AFS: WSSSYNYX

Fax: (65) 64410221

Email: [caas\\_singaporeais@caas.gov.sg](mailto:caas_singaporeais@caas.gov.sg)URL: [www.caas.gov.sg](http://www.caas.gov.sg)URL: <https://aim-sg.caas.gov.sg>**AIP Supplement for  
Singapore****AIP SUP  
052/2021****Effective from 08 APR 2021****/ 01 FEB 2022****Published on 08 APR 2021****PAYA LEBAR AIRPORT – LUFFING TOWER CRANE**

WIE/2202011559 one luffing tower crane, height 394ft AMSL, erected at 011800N 1035353E (bearing 184.8 degrees, distance 3.36nm from Paya Lebar ARP - within Paya Lebar Control Zone). Crane marked and lighted at night. (NOTAM A1307/21 dated 20/03/2021 is hereby superseded.)

**LOCATION OF OBSTACLES**

*PAGE INTENTIONALLY LEFT BLANK*