

Contact

Post:

REPUBLIC OF SINGAPORE
AERONAUTICAL
INFORMATION SERVICES
CIVIL AVIATION AUTHORITY
OF SINGAPORE
SINGAPORE CHANGI
AIRPORT
P.O. BOX 1, SINGAPORE
918141

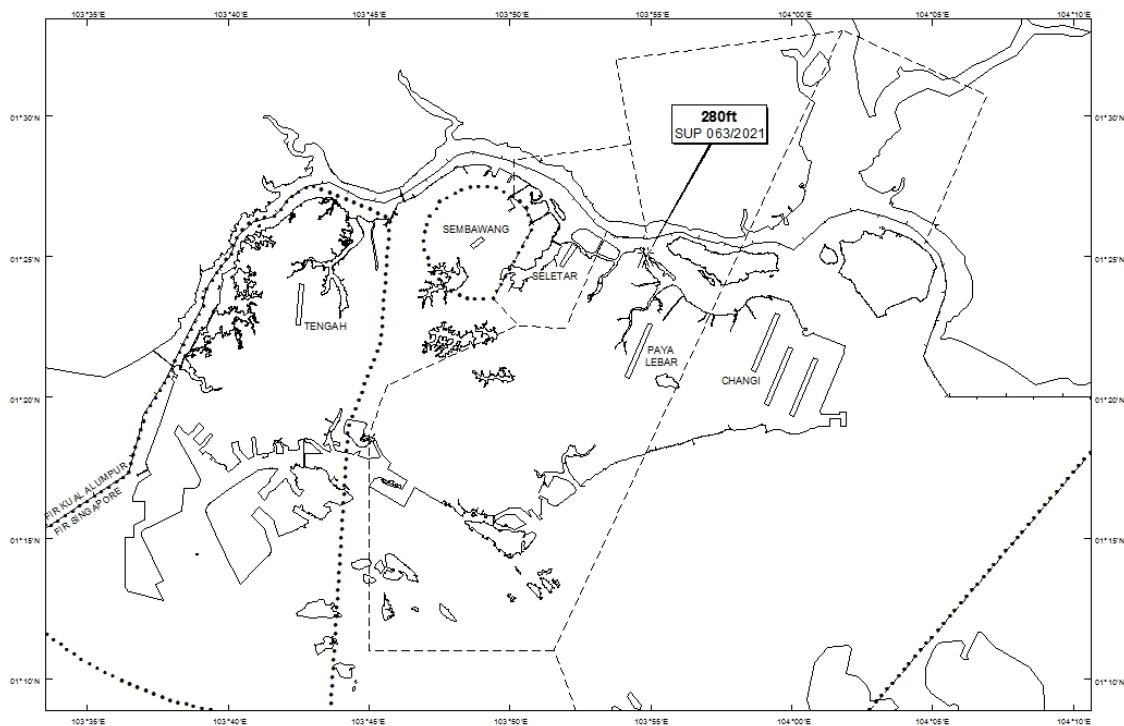
Tel: (65) 6422 7036

AFS: WSSSYNYX

Fax: (65) 64410221

Email: caas_singaporeais@caas.gov.sgURL: www.caas.gov.sgURL: <https://aim-sg.caas.gov.sg>**AIP Supplement for
Singapore****AIP SUP
063/2021****Effective from 19 MAY 2021****/ 01 APR 2022****Published on 19 MAY 2021****PAYA LEBAR AIRPORT – CRANES**

WIE/2204011559 four rough terrain cranes, eight crawler cranes and three mobile cranes, height 280ft AMSL, erected at 012457N 1035450E (bearing 10.5 degrees, distance 3.67nm from Paya Lebar ARP - within Paya Lebar Control Zone). Cranes marked and lighted at night. (NOTAM A2121/21 dated 30/04/2021 is hereby superseded.)

LOCATION OF OBSTACLES

PAGE INTENTIONALLY LEFT BLANK