

Contact

Post:

REPUBLIC OF SINGAPORE
AERONAUTICAL
INFORMATION SERVICES
CIVIL AVIATION AUTHORITY
OF SINGAPORE
SINGAPORE CHANGI
AIRPORT
P.O. BOX 1, SINGAPORE
918141

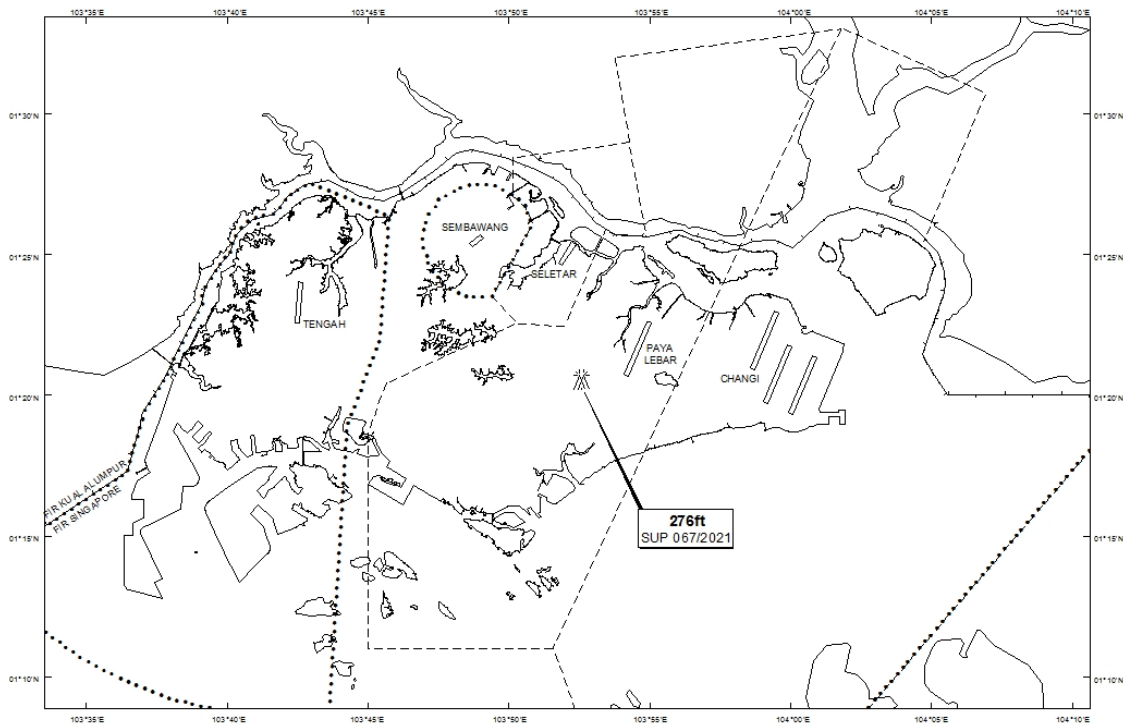
Tel: (65) 6422 7036

AFS: WSSSYNYX

Fax: (65) 64410221

Email: caas_singaporeais@caas.gov.sgURL: www.caas.gov.sgURL: <https://aim-sg.caas.gov.sg>**AIP Supplement for
Singapore****AIP SUP
067/2021****Effective from 19 MAY 2021****/ 01 MAY 2022****Published on 19 MAY 2021****PAYA LEBAR AIRPORT – CRANES**

WIE/2205011559 thirteen flat top cranes and one luffer crane, height 276ft AMSL, erected at 012032N 1035234E (bearing 243.1 degrees, distance 1.8nm from Paya Lebar ARP - within Paya Lebar Control Zone). Cranes marked and lighted at night. (NOTAM A1754/21 dated 16/04/2021 is hereby superseded.)

LOCATION OF OBSTACLES

PAGE INTENTIONALLY LEFT BLANK