

Contact

Post:

REPUBLIC OF SINGAPORE
AERONAUTICAL
INFORMATION SERVICES
CIVIL AVIATION AUTHORITY
OF SINGAPORE
SINGAPORE CHANGI
AIRPORT
P.O. BOX 1, SINGAPORE
918141

Tel: (65) 6422 7036

AFS: WSSSYNYX

Fax: (65) 64410221

Email: caas_singaporeais@caas.gov.sgURL: www.caas.gov.sgURL: <https://aim-sg.caas.gov.sg>

AIP Supplement for Singapore



**AIP SUP
069/2021**

Effective from 19 MAY 2021

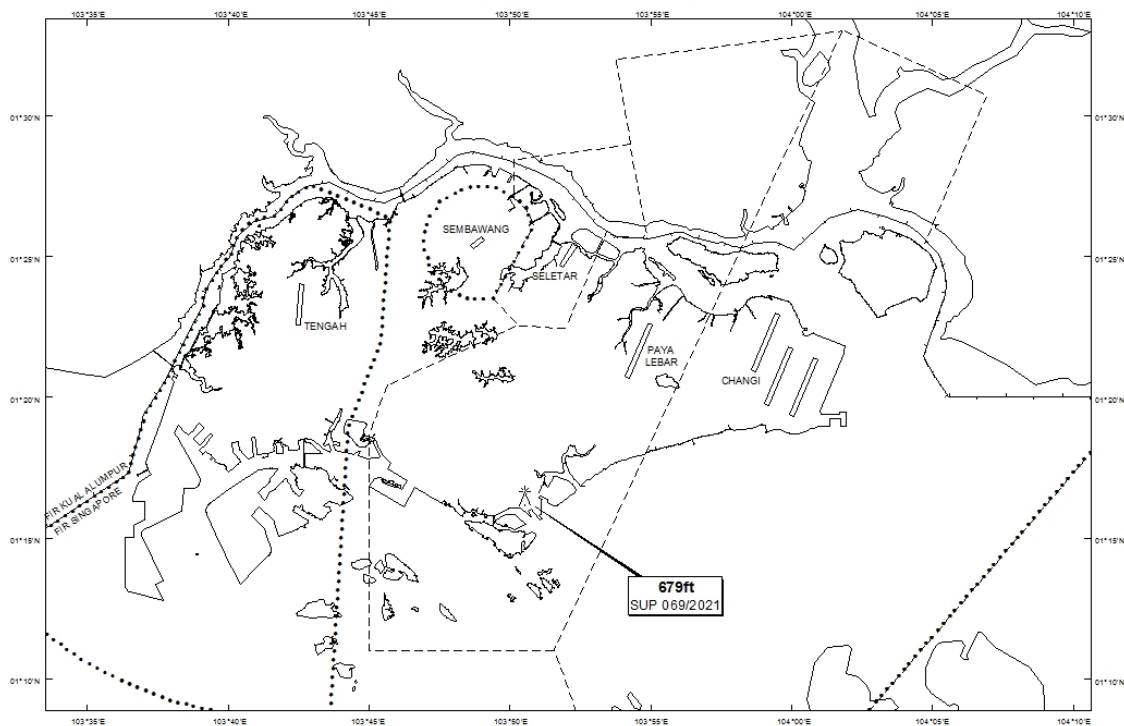
/ 01 JAN 2022

Published on 19 MAY 2021

PAYA LEBAR AIRPORT – LUFFING CRANE

WIE/2201011559 one luffing crane, height 679ft AMSL, erected at 011628N 1035032E (bearing 216.7 degrees, distance 6.08nm from Paya Lebar ARP - within Paya Lebar Control Zone). Crane marked and lighted at night. (NOTAM A1678/21 dated 09/04/2021 is hereby superseded.)

LOCATION OF OBSTACLES



PAGE INTENTIONALLY LEFT BLANK