

Contact

Post:

REPUBLIC OF SINGAPORE
AERONAUTICAL
INFORMATION SERVICES
CIVIL AVIATION AUTHORITY
OF SINGAPORE
SINGAPORE CHANGI
AIRPORT
P.O. BOX 1, SINGAPORE
918141

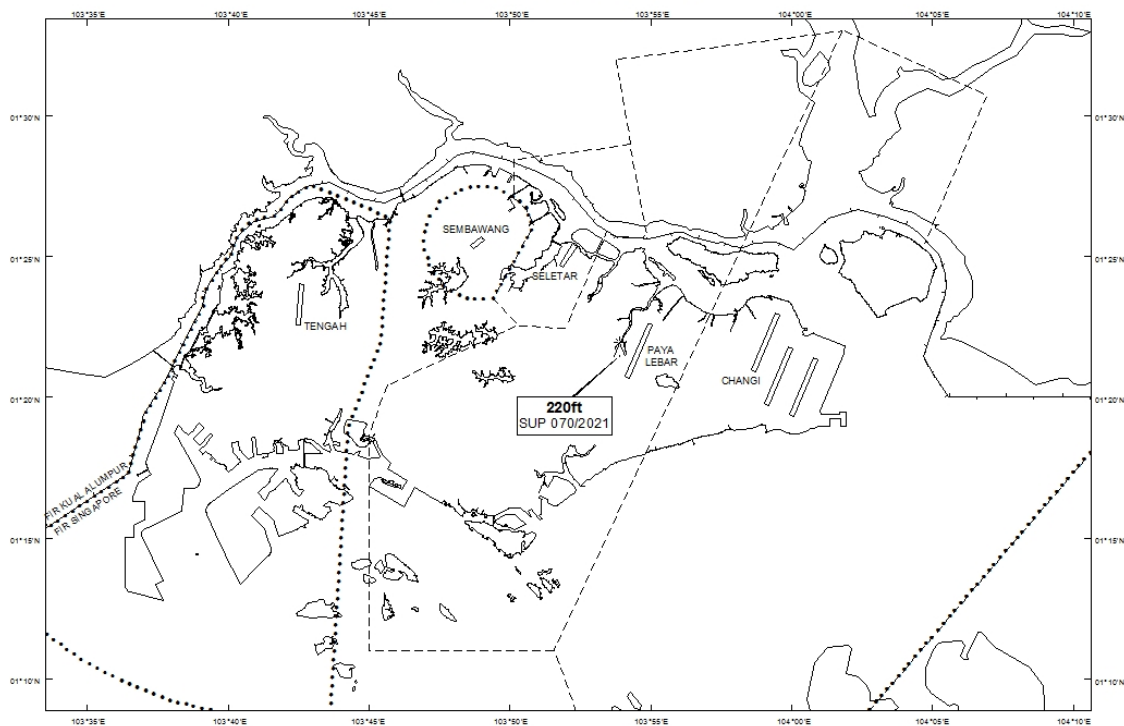
Tel: (65) 6422 7036

AFS: WSSSYNYX

Fax: (65) 64410221

Email: caas_singaporeais@caas.gov.sgURL: www.caas.gov.sgURL: <https://aim-sg.caas.gov.sg>**AIP Supplement for
Singapore****AIP SUP
070/2021****Effective from 19 MAY 2021****/ 15 NOV 2021****Published on 19 MAY 2021****PAYA LEBAR AIRPORT – MOBILE CRANE**

WIE/2111151559 one mobile crane, height 220ft AMSL, erected at 012147N 1035354E (bearing 328.9 degrees, distance 0.51nm from Paya Lebar ARP - within Paya Lebar Control Zone). Crane marked and lighted at night. (NOTAM A1592/21 dated 03/04/2021 is hereby superseded.)

LOCATION OF OBSTACLES

PAGE INTENTIONALLY LEFT BLANK