

Contact

Post:

REPUBLIC OF SINGAPORE
AERONAUTICAL
INFORMATION SERVICES
CIVIL AVIATION AUTHORITY
OF SINGAPORE
SINGAPORE CHANGI
AIRPORT
P.O. BOX 1, SINGAPORE
918141

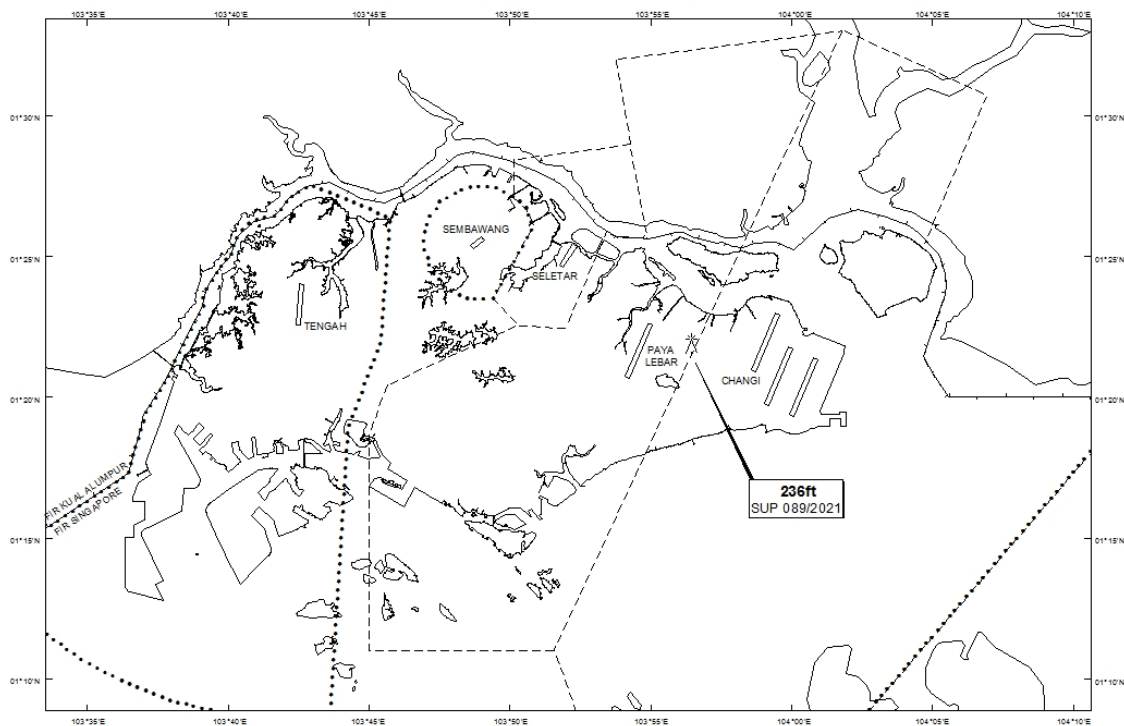
Tel: (65) 6422 7036

AFS: WSSSYNYX

Fax: (65) 64410221

Email: caas_singaporeais@caas.gov.sgURL: www.caas.gov.sgURL: <https://aim-sg.caas.gov.sg>**AIP Supplement for
Singapore****AIP SUP
089/2021****Effective from 08 JUL 2021****/ 30 JUN 2022****Published on 08 JUL 2021****PAYA LEBAR AIRPORT – CRAWLER CRANE**

WIE/2206301559 one crawler crane, height 236ft AMSL, erected at 012153N 1035626E (bearing 76.9 degrees, distance 2.31nm from Paya Lebar ARP - within Paya Lebar Control Zone). Crane marked and lighted at night. (NOTAM A3325/21 dated 24/06/2021 is hereby superseded.)

LOCATION OF OBSTACLES

PAGE INTENTIONALLY LEFT BLANK