

Contact

Post:

REPUBLIC OF SINGAPORE
AERONAUTICAL
INFORMATION SERVICES
CIVIL AVIATION AUTHORITY
OF SINGAPORE
SINGAPORE CHANGI
AIRPORT
P.O. BOX 1, SINGAPORE
918141

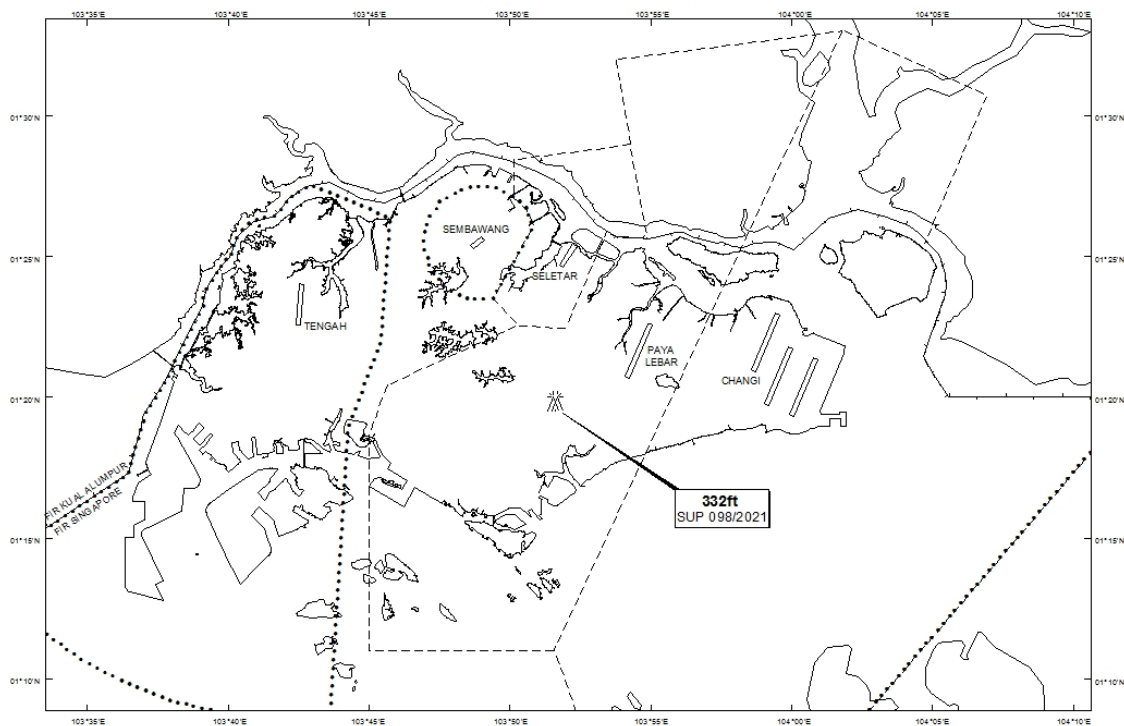
Tel: (65) 6422 7036

AFS: WSSSYNYX

Fax: (65) 64410221

Email: caas_singaporeais@caas.gov.sgURL: www.caas.gov.sgURL: <https://aim-sg.caas.gov.sg>**AIP Supplement for
Singapore****AIP SUP
098/2021****Effective from 19 AUG 2021****/ 01 AUG 2022****Published on 19 AUG 2021****PAYA LEBAR AIRPORT – CRANES**

WIE/2208011559 one luffer crane and four topless cranes, height 332ft AMSL, erected at 011950N 1035136E (bearing 239.5 degrees, distance 2.96nm from Paya Lebar ARP - within Paya Lebar Control Zone). Cranes marked and lighted at night. (NOTAM A3932/21 dated 22/07/2021 is hereby superseded.)

LOCATION OF OBSTACLES

PAGE INTENTIONALLY LEFT BLANK