

Contact

Post:

REPUBLIC OF SINGAPORE
AERONAUTICAL
INFORMATION SERVICES
CIVIL AVIATION AUTHORITY
OF SINGAPORE
SINGAPORE CHANGI
AIRPORT
P.O. BOX 1, SINGAPORE
918141

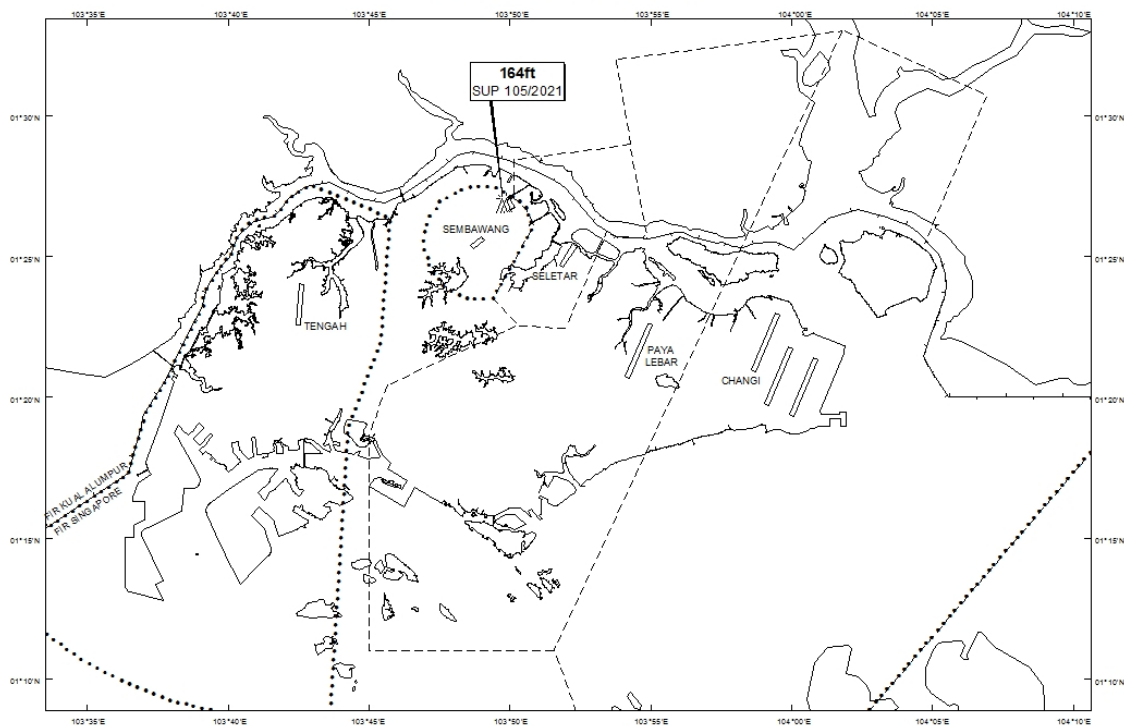
Tel: (65) 6422 7036

AFS: WSSSYNYX

Fax: (65) 64410221

Email: caas_singaporeais@caas.gov.sgURL: www.caas.gov.sgURL: <https://aim-sg.caas.gov.sg>**AIP Supplement for
Singapore****AIP SUP
105/2021****Effective from 19 AUG 2021****/ 31 DEC 2021****Published on 19 AUG 2021****SEMBAWANG AERODROME – SADDLE CRANES**

WIE/2112311559 five saddle cranes, height 164ft AMSL during flying hours, 230ft AMSL during silent hours, erected at 012653N 1034948E (bearing 33 degrees, distance 1.53nm from Sembawang ARP - within Sembawang Aerodrome Traffic Zone). Cranes marked and lighted at night. (NOTAM A4039/21 dated 26/07/2021 is hereby superseded.)

LOCATION OF OBSTACLES

PAGE INTENTIONALLY LEFT BLANK