

Contact

Post:

REPUBLIC OF SINGAPORE
AERONAUTICAL
INFORMATION SERVICES
CIVIL AVIATION AUTHORITY
OF SINGAPORE
SINGAPORE CHANGI
AIRPORT
P.O. BOX 1, SINGAPORE
918141

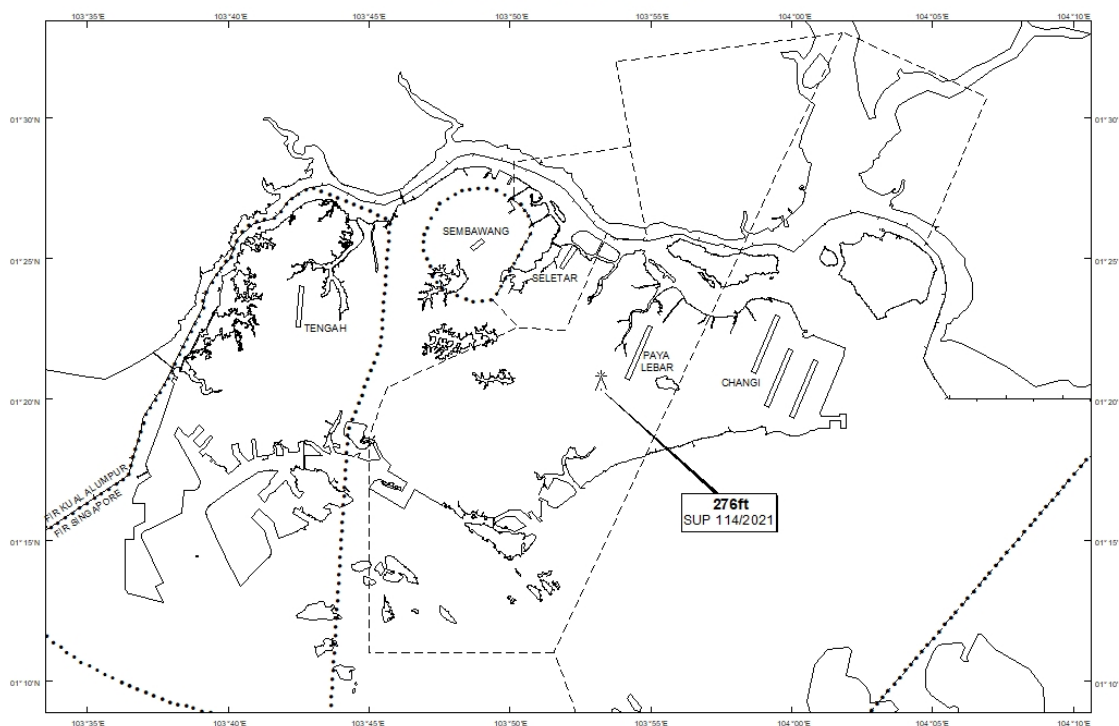
Tel: (65) 6422 7036

AFS: WSSSYNYX

Fax: (65) 64410221

Email: caas_singaporeais@caas.gov.sgURL: www.caas.gov.sgURL: <https://aim-sg.caas.gov.sg>**AIP Supplement for
Singapore****AIP SUP
114/2021****Effective from 10 SEP 2021****/ 01 FEB 2022****Published on 10 SEP 2021****PAYA LEBAR AIRPORT – CRAWLER CRANE**

WIE/2202011559 one crawler crane, height 276ft AMSL, erected at 012040N 1035313E (bearing 234.5 degrees, distance 1.16nm from Paya Lebar ARP - within Paya Lebar Control Zone). Crane marked and lighted at night. (NOTAM A4699/21 dated 21/08/2021 is hereby superseded.)

LOCATION OF OBSTACLES

PAGE INTENTIONALLY LEFT BLANK