

Contact

Post:

REPUBLIC OF SINGAPORE
AERONAUTICAL
INFORMATION SERVICES
CIVIL AVIATION AUTHORITY
OF SINGAPORE
SINGAPORE CHANGI
AIRPORT
P.O. BOX 1, SINGAPORE
918141

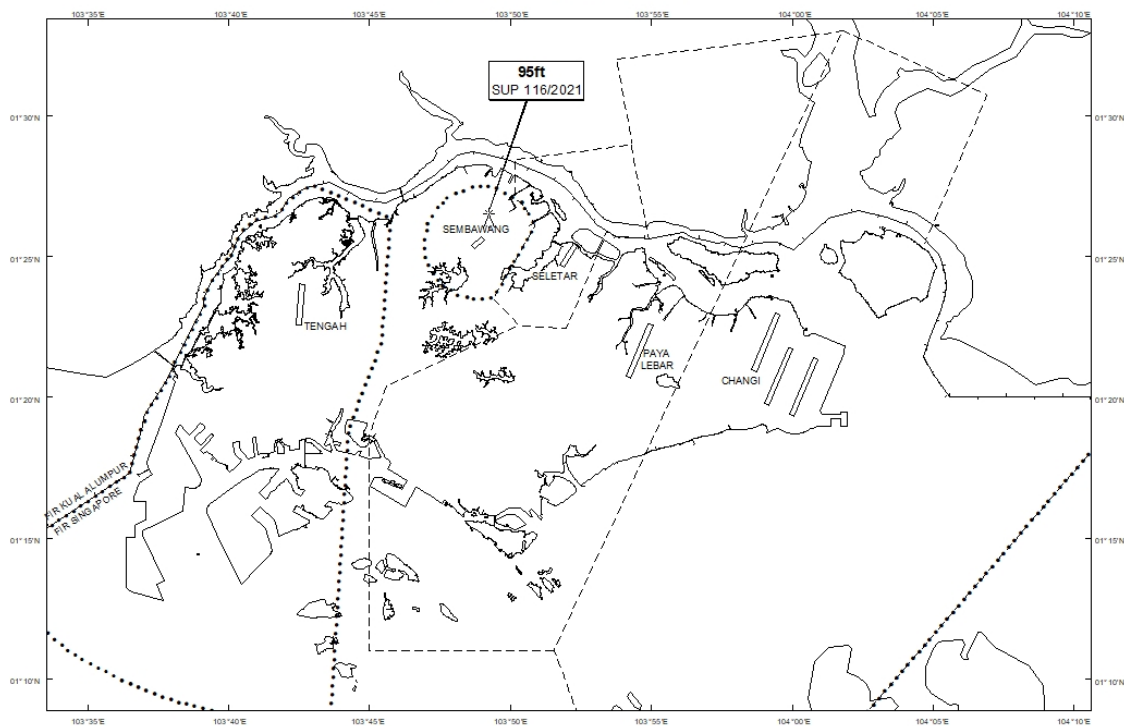
Tel: (65) 6422 7036

AFS: WSSSYNYX

Fax: (65) 64410221

Email: caas_singaporeais@caas.gov.sgURL: www.caas.gov.sgURL: <https://aim-sg.caas.gov.sg>**AIP Supplement for
Singapore****AIP SUP
116/2021****Effective from 10 SEP 2021****/ 10 AUG 2022****Published on 10 SEP 2021****SEMBAWANG AERODROME – LORRY CRANE**

WIE/2208101559 one lorry crane, height 95ft AMSL erected at 012620N 1034913E (bearing 18.7 degrees, distance 0.79nm from Sembawang ARP - within Sembawang Aerodrome Traffic Zone). Crane marked and lighted at night. (NOTAM A4355/21 dated 06/08/2021 is hereby superseded.)

LOCATION OF OBSTACLES

PAGE INTENTIONALLY LEFT BLANK