

**Contact**

Post:

REPUBLIC OF SINGAPORE  
AERONAUTICAL  
INFORMATION SERVICES  
CIVIL AVIATION AUTHORITY  
OF SINGAPORE  
SINGAPORE CHANGI  
AIRPORT  
P.O. BOX 1, SINGAPORE  
918141

Tel: (65) 6422 7036

AFS: WSSSYNYX

Fax: (65) 64410221

Email: [caas\\_singaporeais@caas.gov.sg](mailto:caas_singaporeais@caas.gov.sg)URL: [www.caas.gov.sg](http://www.caas.gov.sg)URL: <https://aim-sg.caas.gov.sg>**AIP Supplement for  
Singapore****AIP SUP****118/2021****Effective from 08 OCT 2021****/ 16 OCT 2021****Published on 10 SEP 2021**

## SINGAPORE FIR - AIRSPACE CLOSURE DUE TO MILITARY EXERCISE 080001UTC TO 161100UTC OCTOBER 2021

**1 INTRODUCTION**

1.1 In relation to Air Defence Exercise (ADEX) BERSAMA GOLD 21 (BG 21), see [AIP Supplement 117/2021](#), military exercise will also take place within the extension areas of Area B, C and D as well as that of the Naval Firing Area / Air-to-Air Engagement Area (see paragraph 2.2 for the lateral and vertical limits) from **080001UTC to 161100UTC October 2021**.

1.2 These exercise airspaces will similarly be active daily during the ADEX with periods of intense aerial activity between **0100-0400UTC** and **0530-0830UTC**. There will be an additional period of intense aerial activity from **1100-1430UTC** on 11 and 12 October 2021. The exercise airspace will be released back to civil ATC when not required by military exercise traffic.

**2 EXERCISE AIRSPACE**

2.1 BG 21 Airspace Cell at the Headquarters Integrated Area Defence System (HQIADS) under the Five Power Defence Arrangements (FPDA) shall be the coordinating authority for the exercise airspace. Outside the ADEX windows, HQIADS will release Area B Extension to the relevant civil aviation authorities when not required for exercise purposes.

2.2 The lateral and vertical limits of the extension areas are as described below and depicted at Charts 1 through 3 to this AIP Supplement.

	Exercise Area (boundary)	Vertical Limit
2.2.1	<p><b>Area B Extension</b> 063000N 1053912E, 063000N 1073000E, 050000N 1073000E, 040000N 1063000E, 031100N 1052000E, 024500N 1051000E, 021600N 1052000E, 013000N 1045200E, 013000N 1043940E, 013800N 1045300E, 015424N 1050512E, 022230N 1050112E, 023000N 1045858E, 025512N 1045130E, 035006N 1044630E, 040300N 1045154E, 050442N 1052848E, 054024N 1054706E, 060548N 1054912E, then to 063000N 1053912E.</p>	See below
	<p><b>Area B (Sector 1)</b> South of 90 DME PU (lower section) Note: Refer to paragraph 3 for variation in vertical limit during specific ADEX windows.</p>	SFC to FL140*
	<p><b>Area B (Sector 2)</b> South of 90 DME PU (upper section)</p>	FL330 to FL460
	<p><b>Area B (Sector 3)</b> Between 90 DME PU and 150 DME PU</p>	SFC to FL230*
	<p><b>Area B (Sector 4)</b> North of 150 DME PU</p>	SFC to FL250*

	Exercise Area (boundary)	Vertical Limit
2.2.2	<p><b>Area C Extension</b> 012535N 1035647E, 012727N 1034243E, SINJON, 011300N 1035300E, 011300N 1035412E, 011610.111N 1040200.471E, 011622.8N 1040216.6E, 011624N 1040248E, then to 012535N 1035647E. Note: Refer to paragraph 7 for airspace within Area C Extension that is designated as civil controlled airspace.</p>	5,000FT to FL290
2.2.3	<p><b>Area D Extensions</b> 012754N 1043610E, 012354N 1042930E, 011700N 1042918E, 011612N 1040706E, 011317N 1040706E, 011530N 1042424E, 011700N 1043700E, then to 012754N 1043610E;  and  012535N 1035647E, 011624N 1040248E, 011634N 1040700E, 012552N 1040424E, then to 012535N 1035647E.</p>	SFC to FL190
2.2.4	<p><b>Naval Firing Area (NFA) / Air-to-Air Engagement Area (AAEA) Extension</b> 023000N 1045858E, 023000N 1051502E, 021600N 1052000E, 013000N 1045200E, 013000N 1043940E, 013800N 1045300E, 015424N 1050512E, 022230N 1050112E then to 023000N 1045858E. Note: Area can be activated for either Naval Firing activities or Air-to-Air engagements.</p>	SFC to FL550

2.3 Civil and non-exercise aircraft may operate up to the limits of the non-exercise airspace. Exercise aircraft will maintain a vertical buffer of 1,000FT and a lateral buffer of 5NM from airspace released for civil use.

### 3 ADEX WINDOW

3.1 ADEX Window 1 active daily between **0100UTC** and **0400UTC**:

- i. Vertical limit of Area B Extension for civil use, between 59 DME PU and 90 DME PU, will be from FL180 to FL320.
- ii. Vertical limit of ATS Route A464 between SJ and 70 DME SJ for civil use will be from FL140 to FL260.

3.2 ADEX Window 2 active daily between **0530UTC** and **0830UTC**:

- i. Vertical limit of ATS Route A464 between SJ and 70 DME SJ for civil use will be from FL140 to FL260.

3.3 ADEX Window 3 active on 11 and 12 October 2021 between **1100UTC** and **1430UTC**:

- i. Vertical limit of Area B Extension for civil use, between 59 DME PU and 90 DME PU, will be from FL180 to FL320.
- ii. Vertical limit of ATS Route A464 between SJ and 70 DME SJ for civil use will be from FL140 to FL260.

3.4 Special Activity period will take place from **140315UTC to 140345UTC October 2021**. The following airport / airspace will be closed to non-exercise aircraft:

- i. Singapore Changi Airport
- ii. Seletar / Paya Lebar CTRs
- iii. Sembawang ATZ
- iv. Singapore Light Aircraft Training Areas A, B and C

### 4 SUSPENSION OF OPERATIONS ON SEGMENT OF ATS ROUTE G334

4.1 All aircraft movements within the following ATS route segment will be temporarily suspended throughout the exercise period. Flights which would normally flight plan to operate along this route segment will plan via the alternate route instead:

	ATS Route	Affected Segment	Alternate Route	Period affected
4.1.1	G334	BUNTO to SAROX	M761 KETOD Y336 PADLI Y343 SAROX	Entire duration of exercise period.

### 5 REQUESTS FOR CLEARANCES INTO EXERCISE AIRSPACE

5.1 Civil and non-exercise aircraft operating into and out of airports in Peninsular Malaysia and Singapore via established ATS routes which intend to operate in the active exercise areas shall be permitted to operate subject to prior coordination. Pilots of such flights shall conform strictly to the ATC clearances issued before entering active exercise areas. Any clearance into the exercise area will automatically expire if the aircraft cannot remain within 10 minutes of the flight planned ETDs and ETAs.

5.2 Civil and non-exercise aircraft requiring clearance into exercise airspace should submit a flight plan and inform BG 21 Airspace Cell and SATCC at least six hours prior to departure. Submission of flight plan, either by email or fax, will be via the relevant AIS Office/operator. The Airspace Cell will process these requests and endeavour to approve the flight plan or provide a de-conflicted slot time. BG 21 Airspace Cell will then pass this information to the operator and SATCC for approval/rejection dissemination. **Any queries should be directed to the BG 21 Airspace Cell at HQIADS, Butterworth.**

5.3 In the event of request for clearance into exercise airspace has been approved by BG 21 Airspace Cell, **operator shall enter this information under item 18 OTHER INFORMATION "RMK/BG21A" when submitting actual flight plan.**

## 6 INTERCEPTION AND IDENTIFICATION OF NON-EXERCISE AIRCRAFT

6.1 All non-exercise SSR transponder-equipped aircraft when operating in the Kuala Lumpur and Singapore FIRs during the exercise period shall have their transponders set to their allocated SSR codes, or if a code has not been allocated, they should set Mode 3/A Code 2000.

6.2 Civil and non-exercise military aircraft entering or transiting the active exercise areas may be intercepted for the purpose of identification. An aircraft which is intercepted by another aircraft shall act in accordance to the instructions in the AIPs (Malaysia ENR 1.12/Singapore ENR 1.12).

6.3 Civil and non-exercise military aircraft experiencing an emergency that necessitates them entering an active exercise area should immediately advise the appropriate ATC agency so that necessary action can be taken to co-ordinate a safe entry into the area.

## 7 CIVIL CONTROLLED AIRSPACE WITHIN EXERCISE AIRSPACE

7.1 Unless otherwise specified, the following ATS routes and controlled airspace within the Exercise Areas are available as civil controlled airspace throughout the entire period of the exercise.

	ATS Route	Segments	Vertical Limit
7.1.1	A464	SJ to 70 DME SJ 70 DME SJ to Kuala Lumpur TMA boundary	FL140 to FL260 FL140 to FL460
7.1.2	G580	East of HOSBA within Area D	7,000FT to FL260

7.2 Unless otherwise specified, the following civil controlled airspace within the Exercise Areas is available as civil controlled airspace throughout the entire exercise period.

	Airspace	Vertical Limit
7.2.1	Changi CTR and the area north of Changi CTR commencing at 013300N 1040154E to 013800N 1040154E, 013800N 1042000E, 013000N 1042000E, 012000N 1041224E, then along the Kuala Lumpur / Singapore FIR boundary to 012542N 1040454E, 013042N 1040700E and 013300N 1040154E. Note: During Special Activity period specified in paragraph 3.4, the vertical limit is FL140 to FL260.	SFC to FL260
7.2.2	The area bounded by 011310N 1040615E, 012000N 1041224E, 013000N 1042000E, 013000N 1042426E, 011530N 1042424E and 011310N 1040615E. Note: During Special Activity period specified in paragraph 3.4, the vertical limit is FL140 to FL260.	2,000FT to FL260
7.2.3	Helicopter Operating Area bounded by 051133N 1033246E then along the Kuala Lumpur/Singapore FIR boundary to 052536N 1032356E thence along the Kuala Terengganu CTR boundary to 055607N 1031526E, 060000N 1031500E, 063000N 1030000E, 064500N 1024000E, 070000N 1030000E, 070000N 1042848E, 054000N 1060000E, 050000N 1060000E, 042000N 1043000E, 042501N 1040500E, thence along the Kerteh CTR boundary to 051133N 1033246E.	SFC to 4,000FT
7.2.4	Singapore Light Aircraft Training Areas A, B and C together with Seletar CTR (Zone 'A' and Zone 'B'), Paya Lebar CTR and Sembawang ATZ.	Refer to paragraph 3.4 for Special Activity period
7.2.5	Johor Bahru Temporary CTR 012730N 1034400E, 013530N 1033600E, then clockwise around the arc of a circle radius 5.3NM centred on 013742N 1034100E to 014000N 1034555E, 012830N 1034800E, then along the Kuala Lumpur / Singapore FIR boundary to 012730N 1034400E (excluding WMP228).	SFC to 8,000FT
7.2.6	The area bounded by 014928N 1035014E, 015758N 1034921E, thence clockwise along 35 DME VTK arc to 015439N 1042000E, 013800N 1042000E, 013800N 1040154E, 013300N 1040154E, 012519N 1035813E and 014928N 1035014E (within Area D south of 35 DME VTK). Note: During Special Activity period specified in paragraph 3.4, the vertical limit is FL140 to FL260.	3,000FT to FL260 <u>Special Activity Period</u> * FL140 to FL260

## 8 RESTRICTIONS AND PROCEDURES

### 8.1 SINGAPORE CHANGI AIRPORT

8.1.1 During the intense aerial activity, ADEX Windows as described in paragraph 3, ATS Route Y339 is not available for flight planning. Aircraft departing from Singapore Changi Airport, routing via Peninsular Malaysia, to file MASBO SID for ATS Route A457 to VKL. Overflights are to flight plan via A457.

8.1.2 Aircraft arriving via ATS Route A464, to file ARAMA STAR, can expect to maintain FL140 until BOBAG. (En-route descent may be available, but it should not be anticipated).

8.1.3 Singapore Changi Airport will be closed during the Special Activity period from **140315UTC to 140345UTC October 2021**.

8.1.4 To ensure that departures from Singapore Changi Airport are able to pass through FL140 prior to the commencement of the Special Activity, ATC will only allow departures up to 10 minutes before airport closure time.

### 8.2 JOHOR BAHRU / SENAI INTERNATIONAL AIRPORT

8.2.1 The Johor Bahru CTR will be deactivated for the period of the exercise. However, to allow for scheduled civil aircraft operations in and out of Johor Bahru/Senai International Airport, including the completion of standard instrument approaches and departures, a temporary CTR as described at paragraph 7.2.5 will be released to civil ATC. Please refer to AIP Supplement 117/2021 for more details.

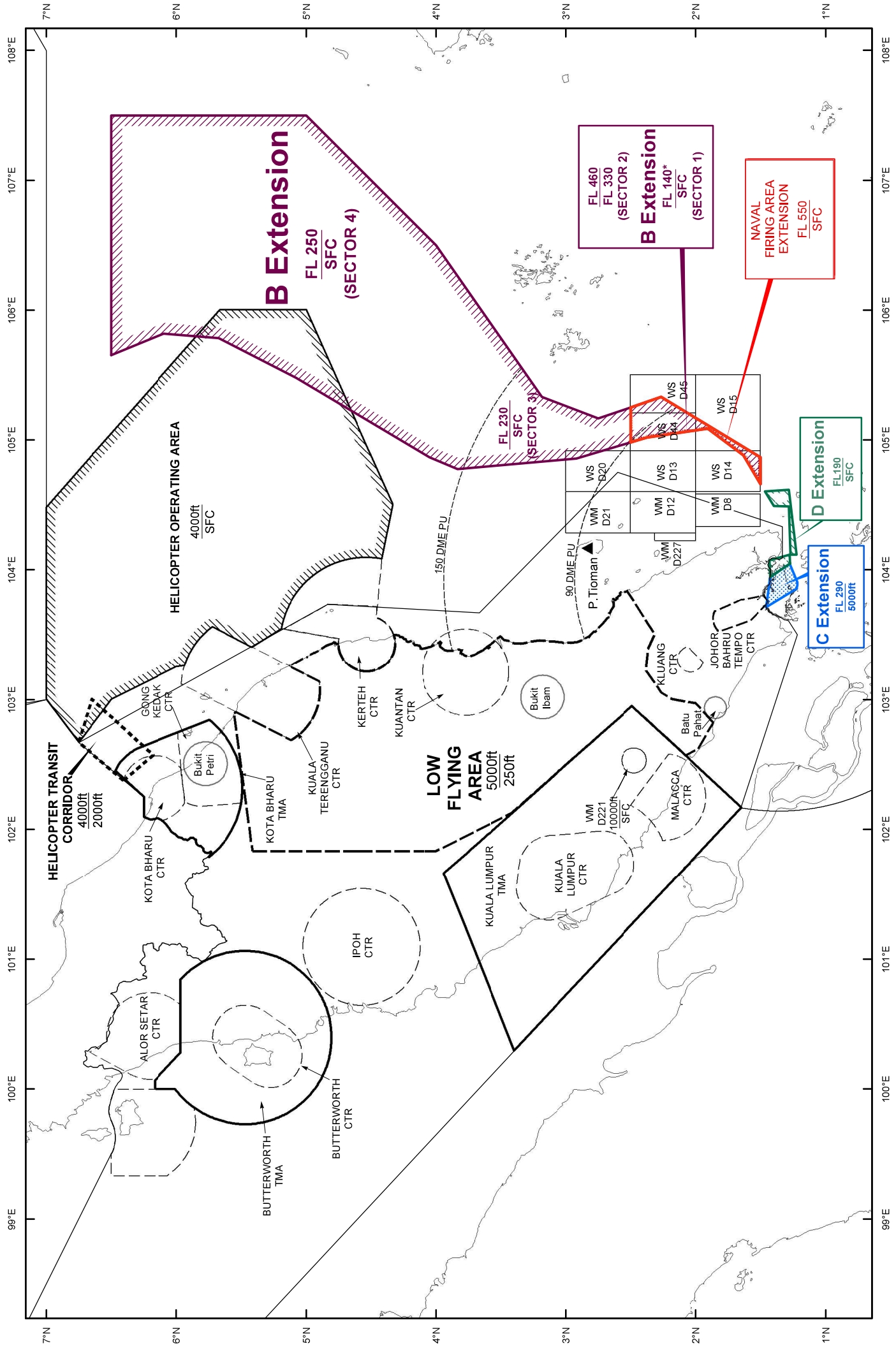
## 9 COORDINATION TELEPHONE, FACSIMILE NUMBERS AND EMAIL

Unit	Contact Details
BG 21 Airspace Cell at HQIADS, Butterworth (Airspace Coordinator)	Phone : +60 43143099 +60 43143342 Fax : +60 43239926 +60 43325159 e-mail : <a href="mailto:bxairspacecoord@hqiads.mil.my">bxairspacecoord@hqiads.mil.my</a> <a href="mailto:so2plansaira@hqiads.mil.my">so2plansaira@hqiads.mil.my</a>
Exercise Coordinator (JAMCC Sepang)	Phone : +60 11-65566370 +60 11-65677661
Singapore Area Coordinator (SATCC)	Phone : +65 65105333 Fax : +65 65105314
Kuantan Area Coordinator	Phone : +60 9-5385232
Butterworth Area Coordinator	Phone : +60 4-3319740
Kuala Lumpur ACC, Sepang	Phone : +60 3-85291242 +60 3-85291245 Fax : +60 3-85291240

Bersama Gold 2021\_chart 1 ..... [Chart 1](#)  
 Bersama Gold 2021\_chart 2 ..... [Chart 2](#)  
 Bersama Gold 2021\_chart 3 ..... [Chart 3](#)

# EXERCISE BERSAMA GOLD 2021 - EXERCISE AIRSPACE EXTENSIONS

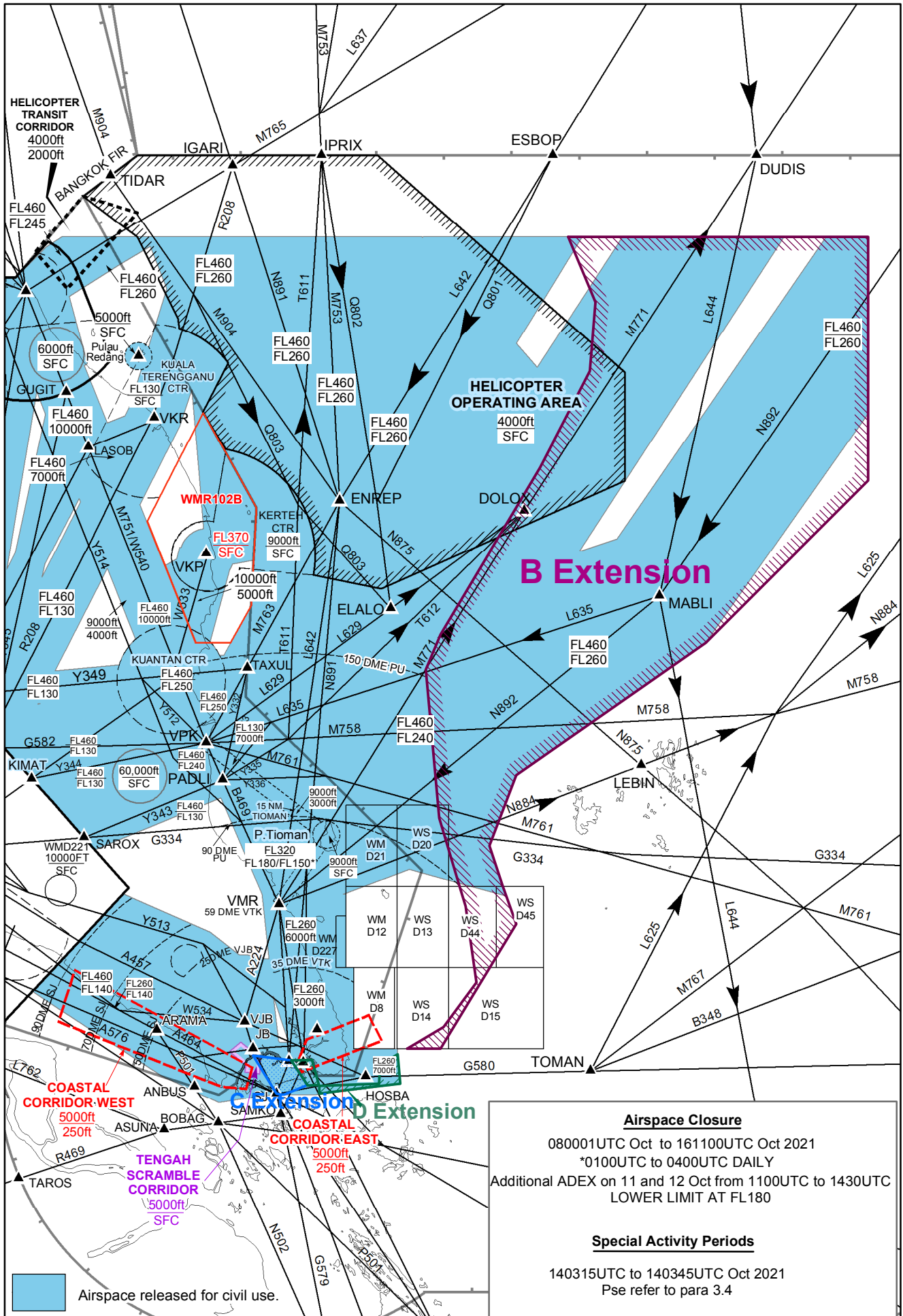
CHART 1



*PAGE INTENTIONALLY LEFT BLANK*

**EXERCISE BERSAMA GOLD 2021  
SINGAPORE & KUALA LUMPUR FIRs  
080001UTC OCT TO 161100UTC OCT 2021**

CHART 2



*PAGE INTENTIONALLY LEFT BLANK*





*PAGE INTENTIONALLY LEFT BLANK*