

Contact

Post:

REPUBLIC OF SINGAPORE
AERONAUTICAL
INFORMATION SERVICES
CIVIL AVIATION AUTHORITY
OF SINGAPORE
SINGAPORE CHANGI
AIRPORT
P.O. BOX 1, SINGAPORE
918141

Tel: (65) 6422 7036

AFS: WSSSYNYX

Fax: (65) 64410221

Email: caas_singaporeais@caas.gov.sgURL: www.caas.gov.sgURL: <https://aim-sg.caas.gov.sg>

AIP Supplement for Singapore



**AIP SUP
127/2021**

Effective from 21 OCT 2021

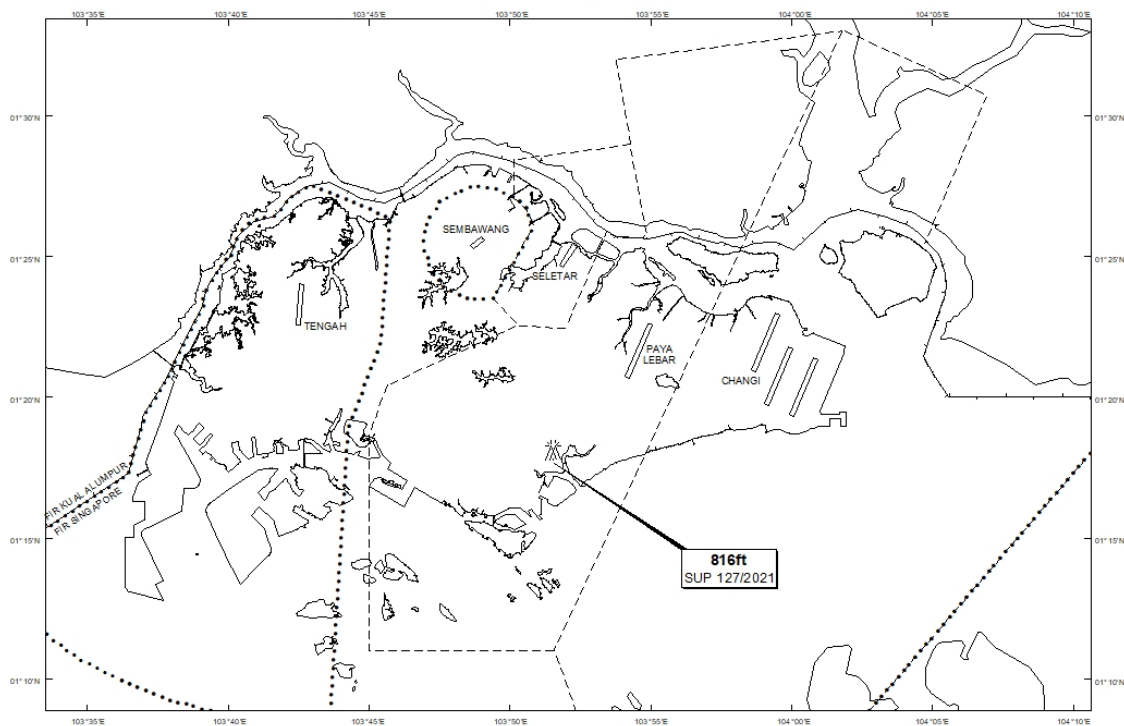
/ 01 OCT 2022

Published on 21 OCT 2021

PAYA LEBAR AIRPORT – LUFFING CRANES

WIE/2210011559 four luffing cranes, height 816ft AMSL, erected at 011751N 1035132E (bearing 217 degrees, distance 4.4nm from Paya Lebar ARP - within Paya Lebar Control Zone). Cranes marked and lighted at night. (NOTAM A5348/21 dated 16/09/2021 is hereby superseded.)

LOCATION OF OBSTACLES



PAGE INTENTIONALLY LEFT BLANK