

Contact

Post:

REPUBLIC OF SINGAPORE
AERONAUTICAL
INFORMATION SERVICES
CIVIL AVIATION AUTHORITY
OF SINGAPORE
SINGAPORE CHANGI
AIRPORT
P.O. BOX 1, SINGAPORE
918141

Tel: (65) 6422 7036

AFS: WSSSYNYX

Fax: (65) 64410221

Email: caas_singaporeais@caas.gov.sgURL: www.caas.gov.sgURL: <https://aim-sg.caas.gov.sg>

AIP Supplement for Singapore



AIP SUP
148/2021

Effective from 16 DEC 2021

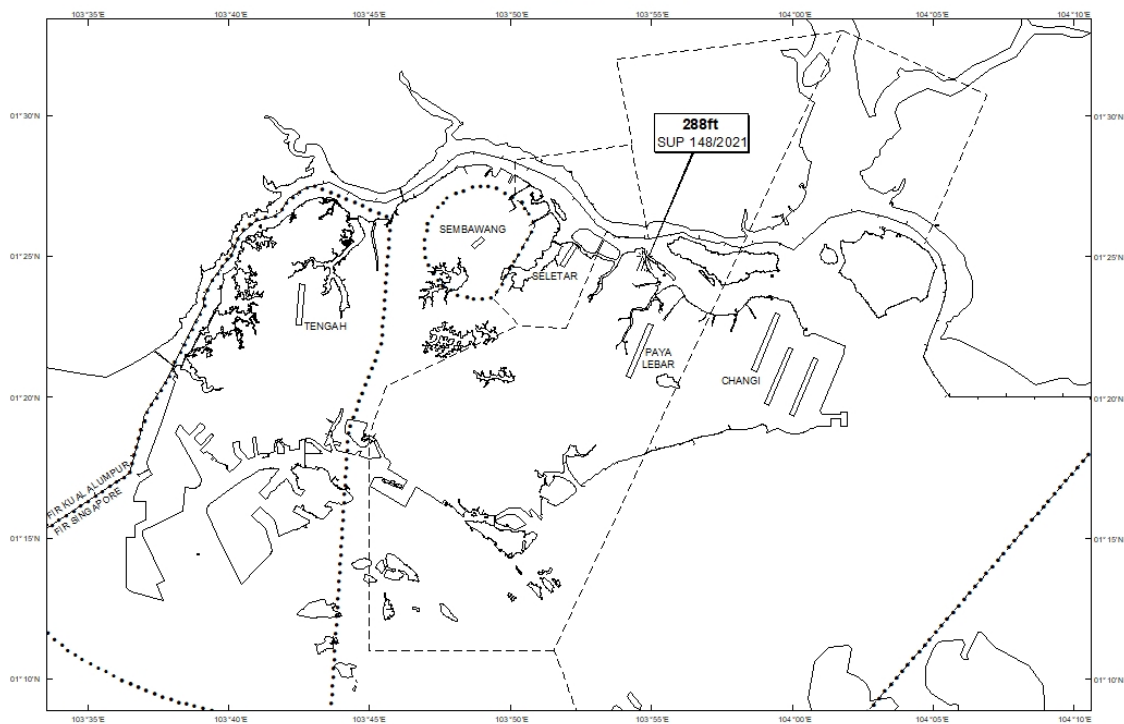
/ 31 DEC 2022

Published on 16 DEC 2021

PAYA LEBAR AIRPORT – FLAT-TOP CRANES

WIE/2212311559 seven flat-top cranes, height 288ft AMSL, erected at 012450N 1035446E (bearing 9.6 degrees, distance 3.54nm from Paya Lebar ARP - within Paya Lebar Control Zone). Cranes marked and lighted at night. (NOTAM A7260/21 dated 29/11/2021 is hereby superseded.)

LOCATION OF OBSTACLES



PAGE INTENTIONALLY LEFT BLANK