

Contact

Post:

REPUBLIC OF SINGAPORE
AERONAUTICAL
INFORMATION SERVICES
CIVIL AVIATION AUTHORITY
OF SINGAPORE
SINGAPORE CHANGI
AIRPORT
P.O. BOX 1, SINGAPORE
918141

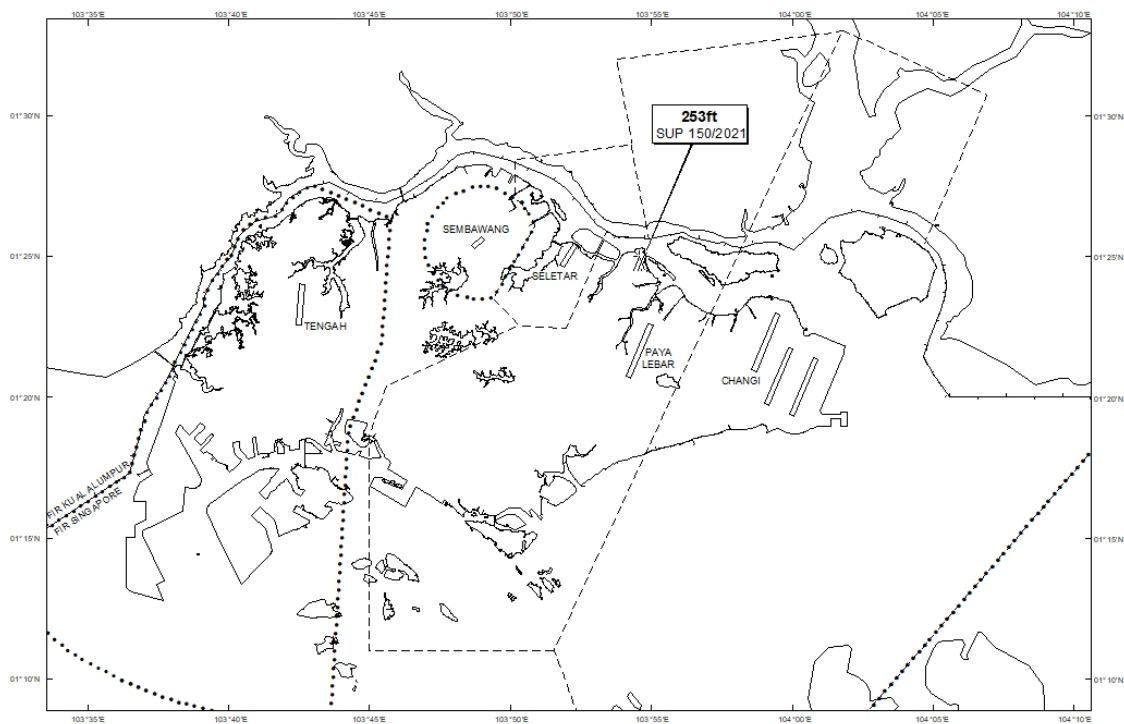
Tel: (65) 6422 7036

AFS: WSSSYNYX

Fax: (65) 64410221

Email: caas_singaporeais@caas.gov.sgURL: www.caas.gov.sgURL: <https://aim-sg.caas.gov.sg>**AIP Supplement for
Singapore****AIP SUP
150/2021****Effective from 16 DEC 2021****/ 31 DEC 2022****Published on 16 DEC 2021****PAYA LEBAR AIRPORT – CRANES**

WIE/2212311559 one crawler service crane and one crawler tower crane, height 253ft AMSL, erected at 012449N 1035438E (bearing 7.4 degrees, distance 3.5nm from Paya Lebar ARP - within Paya Lebar Control Zone). Cranes marked and lighted at night. (NOTAM A7111/21 dated 24/11/2021 is hereby superseded.)

LOCATION OF OBSTACLES

PAGE INTENTIONALLY LEFT BLANK