

Contact

Post:

REPUBLIC OF SINGAPORE
AERONAUTICAL
INFORMATION SERVICES
CIVIL AVIATION AUTHORITY
OF SINGAPORE
SINGAPORE CHANGI
AIRPORT
P.O. BOX 1, SINGAPORE
918141

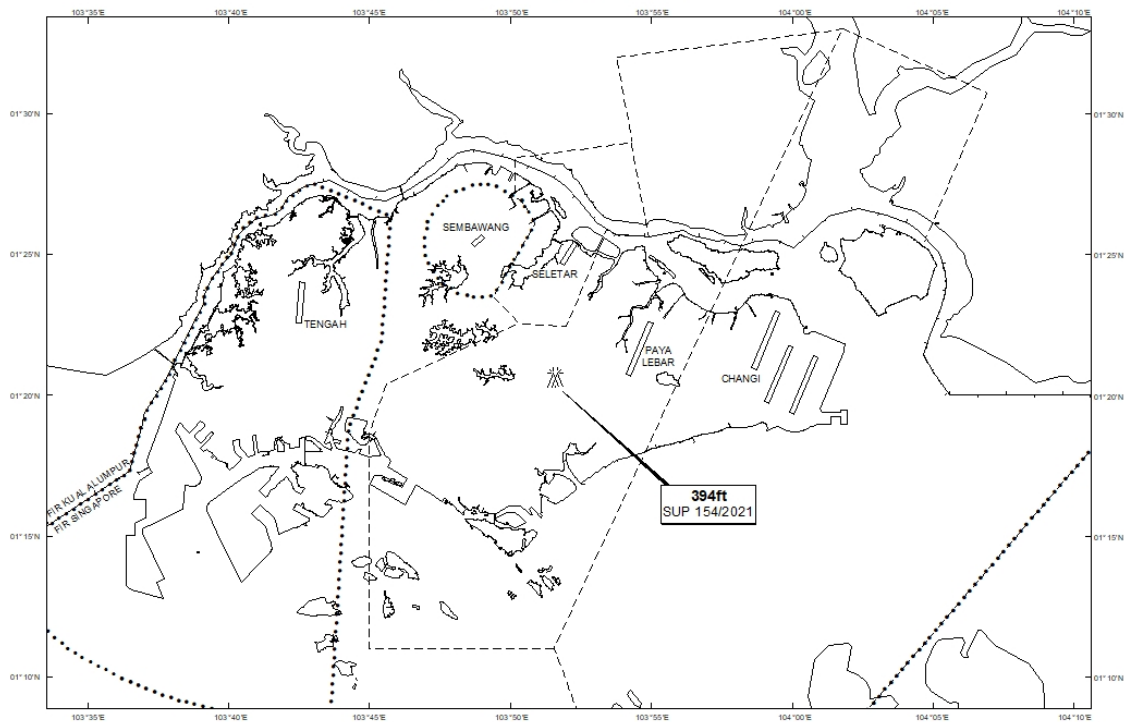
Tel: (65) 6422 7036

AFS: WSSSYNYX

Fax: (65) 64410221

Email: caas_singaporeais@caas.gov.sgURL: www.caas.gov.sgURL: <https://aim-sg.caas.gov.sg>**AIP Supplement for
Singapore****AIP SUP
154/2021****Effective from 16 DEC 2021****/ 15 DEC 2022****Published on 16 DEC 2021****PAYA LEBAR AIRPORT – LUFFING TOWER CRANES**

WIE/2212151559 two luffing tower cranes, height 394ft AMSL, erected at 012038N 1035135E (bearing 254.5 degrees, distance 2.69nm from Paya Lebar ARP - within Paya Lebar Control Zone). Cranes marked and lighted at night. (NOTAM A7106/21 dated 24/11/2021 is hereby superseded.)

LOCATION OF OBSTACLES

PAGE INTENTIONALLY LEFT BLANK