

Contact

Post:

REPUBLIC OF SINGAPORE
AERONAUTICAL
INFORMATION SERVICES
CIVIL AVIATION AUTHORITY
OF SINGAPORE
SINGAPORE CHANGI
AIRPORT
P.O. BOX 1, SINGAPORE
918141

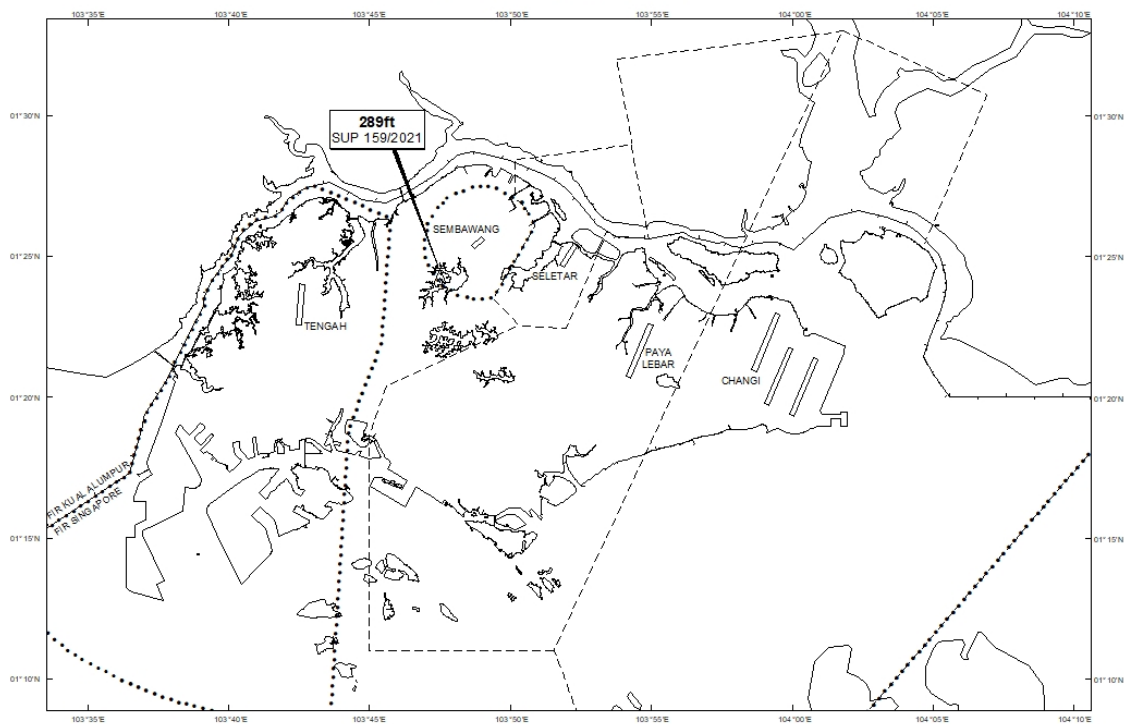
Tel: (65) 6422 7036

AFS: WSSSYNYX

Fax: (65) 64410221

Email: caas_singaporeais@caas.gov.sgURL: www.caas.gov.sgURL: <https://aim-sg.caas.gov.sg>**AIP Supplement for
Singapore****AIP SUP
159/2021****Effective from 16 DEC 2021****/ 08 NOV 2022****Published on 16 DEC 2021****SEMBAWANG AERODROME – MOBILE CRANE**

WIE/2211081559 one mobile crane, height 289ft AMSL erected at 012424N 1034729E (bearing 230.7 degrees, distance 1.92nm from Sembawang ARP - within Sembawang Aerodrome Traffic Zone). Crane marked and lighted at night. (NOTAM A6706/21 dated 05/11/2021 is hereby superseded.)

LOCATION OF OBSTACLES

PAGE INTENTIONALLY LEFT BLANK