

**Contact**

Post:

REPUBLIC OF SINGAPORE  
AERONAUTICAL  
INFORMATION SERVICES  
CIVIL AVIATION AUTHORITY  
OF SINGAPORE  
SINGAPORE CHANGI  
AIRPORT  
P.O. BOX 1, SINGAPORE  
918141

Tel: (65) 6422 7036

AFS: WSSSYNYX

Fax: (65) 64410221

Email: [caas\\_singaporeais@caas.gov.sg](mailto:caas_singaporeais@caas.gov.sg)URL: [www.caas.gov.sg](http://www.caas.gov.sg)URL: <https://aim-sg.caas.gov.sg>

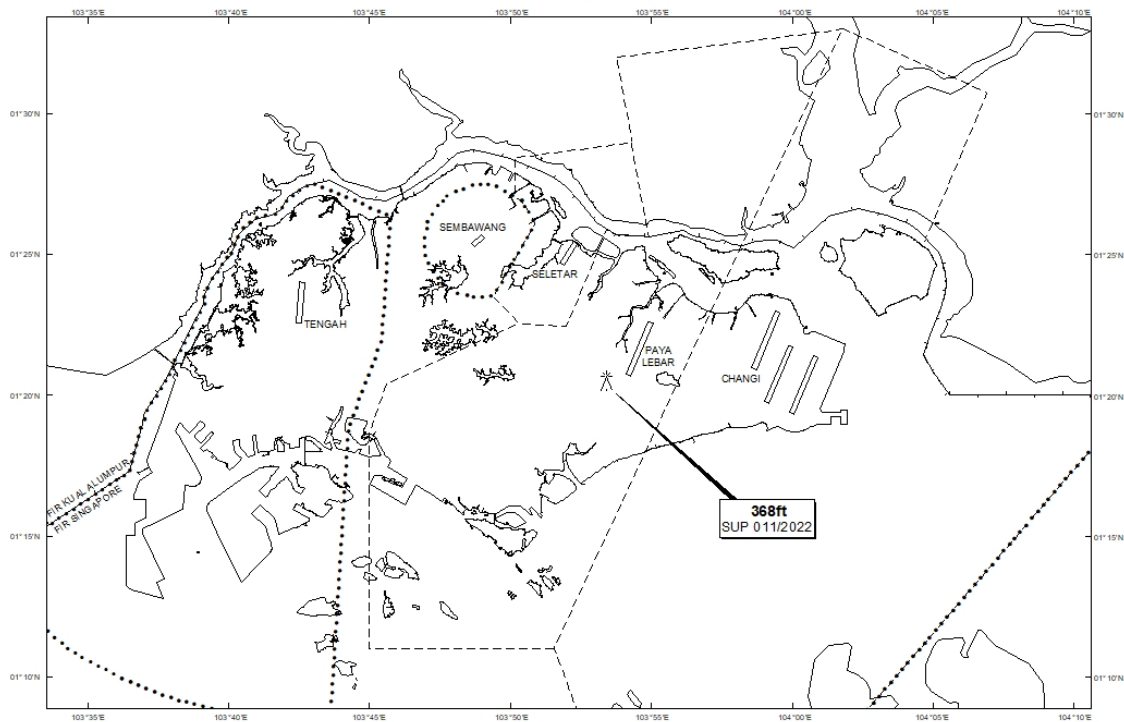
## AIP Supplement for Singapore

**AIP SUP****011/2022****Effective from 11 JAN 2022****/ 31 DEC 2022****Published on 11 JAN 2022**

### PAYA LEBAR AIRPORT – LUFFING CRANE

WIE/2212311559 one luffing crane, height 368ft AMSL, erected at 012030N 1035325E (bearing 221.3 degrees, distance 1.13nm from Paya Lebar ARP - within Paya Lebar Control Zone). Crane marked and lighted at night. (NOTAM A7890/21 dated 21/12/2021 is hereby superseded.)

#### LOCATION OF OBSTACLES



*PAGE INTENTIONALLY LEFT BLANK*