

**Contact**

Post:

REPUBLIC OF SINGAPORE  
AERONAUTICAL  
INFORMATION SERVICES  
CIVIL AVIATION AUTHORITY  
OF SINGAPORE  
SINGAPORE CHANGI  
AIRPORT  
P.O. BOX 1, SINGAPORE  
918141

Tel: (65) 6422 7036

AFS: WSSSYNYX

Fax: (65) 64410221

Email: [caas\\_singaporeais@caas.gov.sg](mailto:caas_singaporeais@caas.gov.sg)URL: [www.caas.gov.sg](http://www.caas.gov.sg)URL: <https://aim-sg.caas.gov.sg>

## AIP Supplement for Singapore



**AIP SUP**  
**017/2022**

Effective from 11 JAN 2022

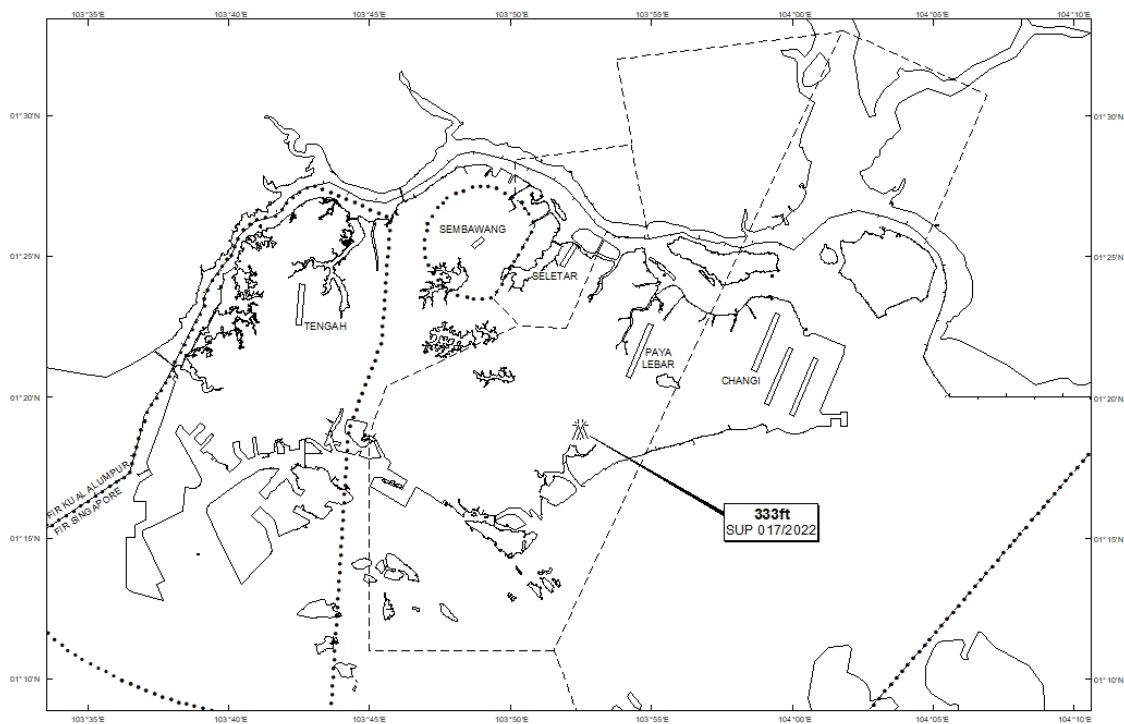
/ 31 DEC 2022

Published on 11 JAN 2022

### PAYA LEBAR AIRPORT – FLAT-TOP CRANES

WIE/2212311559 three flat-top cranes, height 333ft AMSL, erected at 011850N 1035229E (bearing 213.9 degrees, distance 3.02nm from Paya Lebar ARP - within Paya Lebar Control Zone). Cranes marked and lighted at night. (NOTAM A7642/21 dated 08/12/2021 is hereby superseded.)

#### LOCATION OF OBSTACLES



*PAGE INTENTIONALLY LEFT BLANK*