

Contact

Post:

REPUBLIC OF SINGAPORE
AERONAUTICAL
INFORMATION SERVICES
CIVIL AVIATION AUTHORITY
OF SINGAPORE
SINGAPORE CHANGI
AIRPORT
P.O. BOX 1, SINGAPORE
918141

Tel: (65) 6422 7036

AFS: WSSSYNYX

Fax: (65) 64410221

Email: caas_singaporeais@caas.gov.sgURL: www.caas.gov.sgURL: <https://aim-sg.caas.gov.sg>

AIP Supplement for Singapore



AIP SUP
025/2022

Effective from 11 JAN 2022

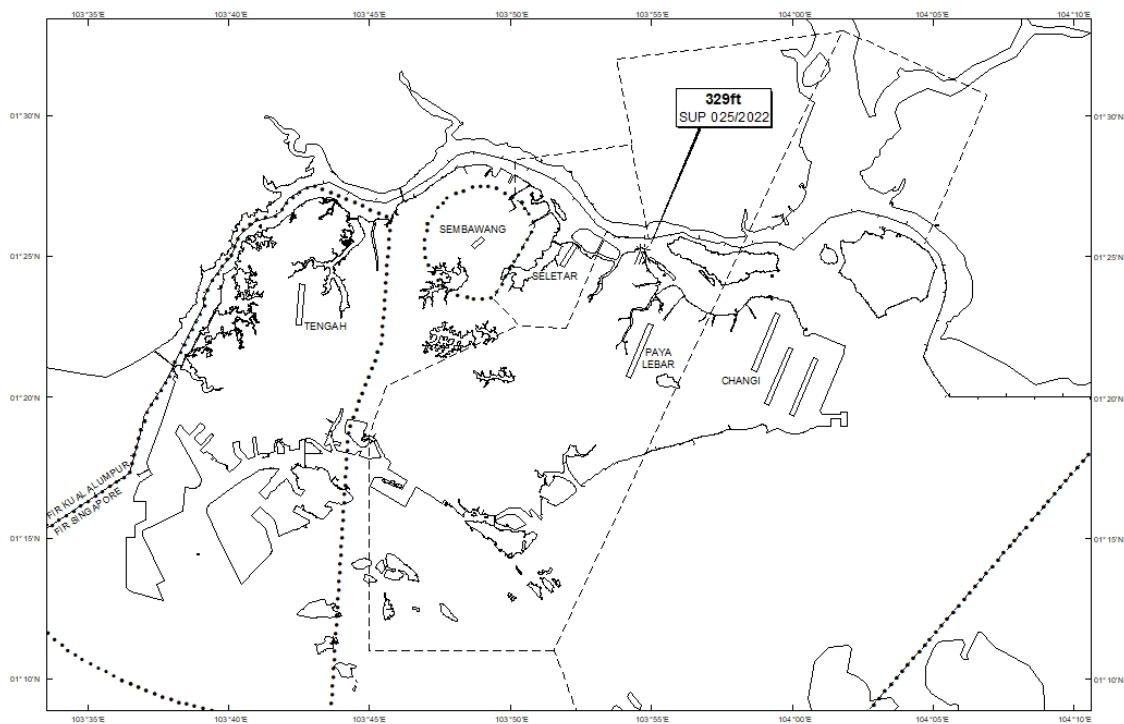
/ 31 DEC 2022

Published on 11 JAN 2022

PAYA LEBAR AIRPORT – SADDLE CRANES

WIE/2212311559 seven saddle cranes, height 329ft AMSL, erected at 012504N 1035442E (bearing 8.1 degrees, distance 3.76nm from Paya Lebar ARP - within Paya Lebar Control Zone). Cranes marked and lighted at night. (NOTAM A7284/21 dated 01/12/2021 is hereby superseded.)

LOCATION OF OBSTACLES



PAGE INTENTIONALLY LEFT BLANK