

Contact

Post:

REPUBLIC OF SINGAPORE
AERONAUTICAL
INFORMATION SERVICES
CIVIL AVIATION AUTHORITY
OF SINGAPORE
SINGAPORE CHANGI
AIRPORT
P.O. BOX 1, SINGAPORE
918141

Tel: (65) 6422 7036

AFS: WSSSYNYX

Fax: (65) 64410221

Email: caas_singaporeais@caas.gov.sgURL: www.caas.gov.sgURL: <https://aim-sg.caas.gov.sg>**AIP Supplement for
Singapore****AIP SUP****026/2022****Effective from 10 FEB 2022****/ 18 FEB 2022****Published on 11 JAN 2022****FLYING DISPLAYS IN CONJUNCTION WITH THE SINGAPORE AIRSHOW 2022
EXHIBITION FROM THURSDAY 10 FEBRUARY TO FRIDAY 18 FEBRUARY 2022****1 INTRODUCTION**

1.1 Flying displays will be conducted during the Singapore Airshow 2022 Exhibition from 15 to 18 February 2022. Prior to the Exhibition, practices and rehearsals will be conducted from 10 to 14 February 2022.

1.2 During the periods of practices, rehearsals and flying displays, Singapore Changi Airport and the airspace around the airport will be closed to non-participating aircraft.

2 RESTRICTIONS AND CLOSURES OF SINGAPORE CHANGI AIRPORT AND AIRSPACE

2.1 The details of the periods of Singapore Changi Airport and airspace closures are shown in Annex A.

2.2 The airspace to be closed is bounded by the following coordinates:

012517N 1035814E, thence clockwise along the Singapore / Kuala Lumpur FIR boundary, 012017N 1040522E, 011707N 1035618E, 011835N 1035658E, thence anti-clockwise along the eastern coastline of Singapore, 012254N 1035707E and 012517N 1035814E.

2.3 The vertical limits of the airspace closure will be from Ground / Sea Level up to 10,000ft AMSL. Please refer to Annex B for the chart showing the area of the airspace closure.

2.4 It is anticipated that many flights will arrive at and depart from Singapore Changi Airport shortly before and after each airport and airspace closure period. To avoid the possibility of flights being delayed until after the airport and airspace are re-opened, aircraft operators are advised to plan their flights to arrive or depart Singapore Changi Airport well before the closure times.

2.5 Aircraft operators are advised to take into consideration possibilities of airborne delay and plan for sufficient fuel for at least 20 minutes of holding.

**3 AIR TRAFFIC FLOW MANAGEMENT (ATFM) MEASURES FOR FLIGHTS ARRIVING AT
SINGAPORE CHANGI AIRPORT**

3.1 ATFM measures, where necessary, will be in place to regulate the air traffic flow to match the prevailing capacity prior to and after the re-opening of Singapore Changi Airport. Please refer to AIP Singapore ENR 1.9 for details on ATFM procedures.

3.2 When ATFM ground delay programme is implemented, flights arriving at Singapore Changi Airport which are issued with a Calculated Take-Off Time (CTOT) shall comply with the restriction. The compliance window of minus 5 / plus 10 minutes will be measured for CTOT. To ensure orderly flow of traffic arriving at Singapore Changi Airport, flights that are non-compliant or not part of the ground delay programme may expect delay, subject to real-time traffic.

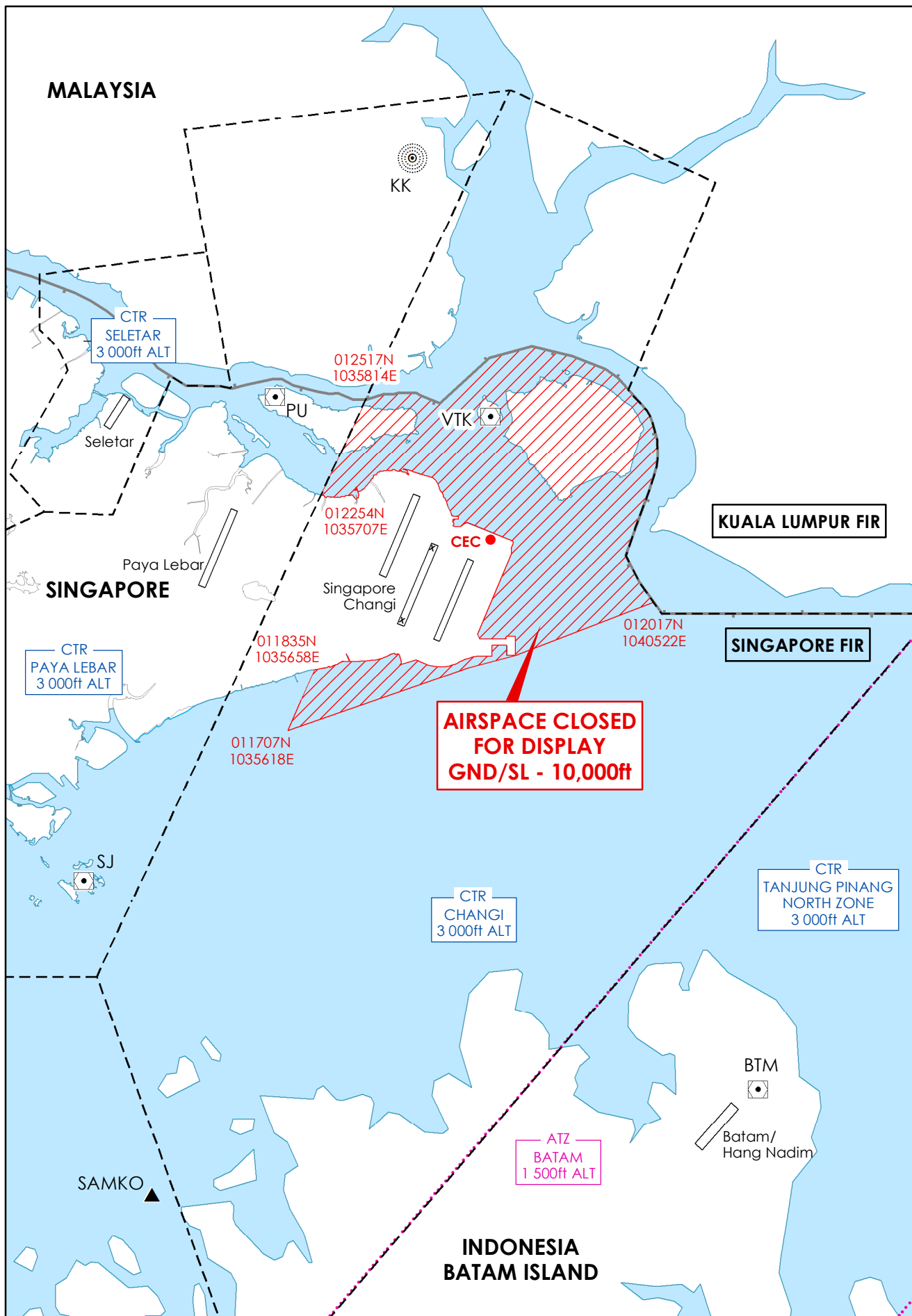
**Closure of Singapore Changi Airport and Airspace during the
Singapore Airshow 2022 Exhibition Flying Displays**

Details of the period of closures of Singapore Changi Airport and Airspace are shown below:

Type of Activity		Day / Date	Timing (UTC)
a)	Practices	Thursday, 10 Feb 22	0230 – 0328
		Friday, 11 Feb 22	0230 – 0338
		Saturday, 12 Feb 22	0230 – 0337
b)	Combined Rehearsals	Sunday, 13 Feb 22	0230 – 0407
		Monday, 14 Feb 22	0230 – 0407
c)	Flying Displays	Tuesday, 15 Feb 22	0430 – 0607
		Wednesday, 16 Feb 22	0330 – 0437
		Thursday, 17 Feb 22	0330 – 0446
		Friday, 18 Feb 22	0330 – 0439

Airspace closure for flying displays [ANNEX B](#)

SINGAPORE AIRSHOW 2022 EXHIBITION AIRSPACE CLOSURE FOR FLYING DISPLAYS



PAGE INTENTIONALLY LEFT BLANK