

**Contact**

Post:

REPUBLIC OF SINGAPORE  
AERONAUTICAL  
INFORMATION SERVICES  
CIVIL AVIATION AUTHORITY  
OF SINGAPORE  
SINGAPORE CHANGI  
AIRPORT  
P.O. BOX 1, SINGAPORE  
918141

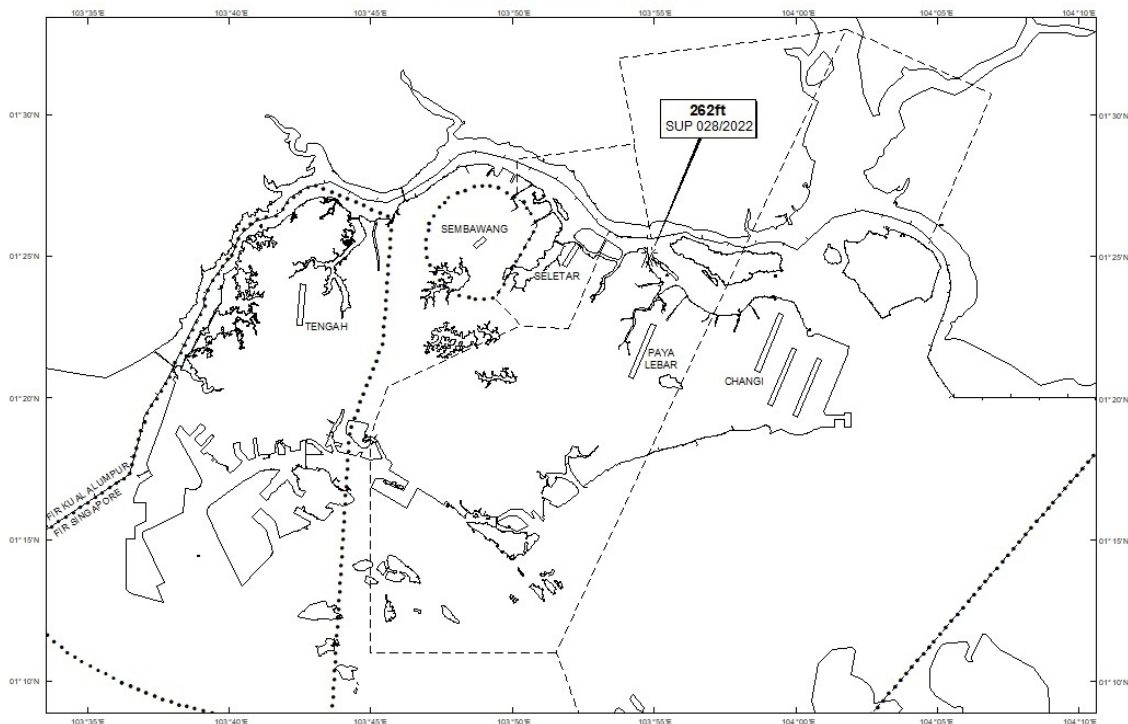
Tel: (65) 6422 7036

AFS: WSSSYNYX

Fax: (65) 64410221

Email: [caas\\_singaporeais@caas.gov.sg](mailto:caas_singaporeais@caas.gov.sg)URL: [www.caas.gov.sg](http://www.caas.gov.sg)URL: <https://aim-sg.caas.gov.sg>**AIP Supplement for  
Singapore****AIP SUP  
028/2022****Effective from 12 JAN 2022****/ 31 DEC 2023****Published on 12 JAN 2022****PAYA LEBAR AIRPORT – FLAT-TOP CRANES**

WIE/2312311559 thirteen flat-top cranes, height 262ft AMSL, erected at 012458N 1035450E (bearing 10.2 degrees, distance 3.67nm from Paya Lebar ARP - within Paya Lebar Control Zone). Cranes marked and lighted at night. (AIP Supplement 027/2022 dated 11/01/2022 is hereby superseded.)

**LOCATION OF OBSTACLES**

*PAGE INTENTIONALLY LEFT BLANK*