

Contact

Post:

REPUBLIC OF SINGAPORE
AERONAUTICAL
INFORMATION SERVICES
CIVIL AVIATION AUTHORITY
OF SINGAPORE
SINGAPORE CHANGI
AIRPORT
P.O. BOX 1, SINGAPORE
918141

Tel: (65) 6422 7036

AFS: WSSSYNYX

Fax: (65) 64410221

Email: caas_singaporeais@caas.gov.sgURL: www.caas.gov.sgURL: <https://aim-sg.caas.gov.sg>

AIP Supplement for Singapore



**AIP SUP
062/2022**

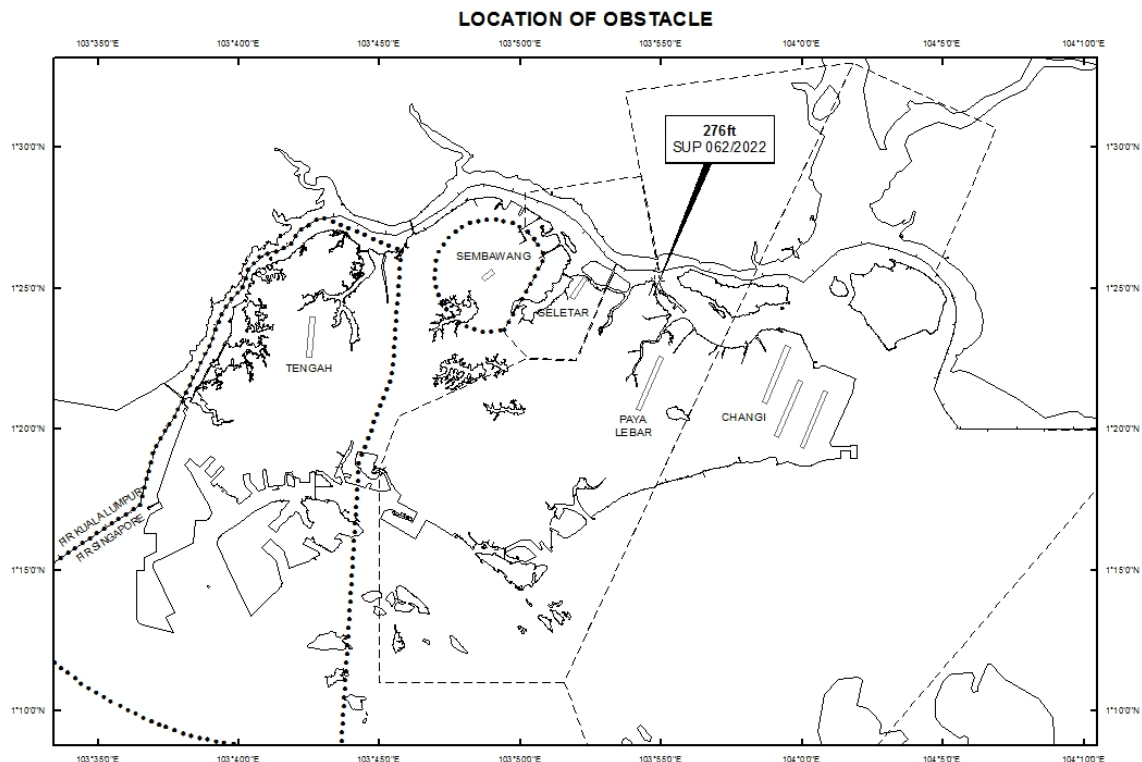
Effective from 12 APR 2022

/ 31 MAR 2023

Published on 12 APR 2022

PAYA LEBAR AIRPORT – CRANES

WIE/2303311559 six rough terrain cranes, six crawler cranes and three mobile cranes, height 276ft AMSL, erected at 012450N 1035451E (bearing 11.1 degrees, distance 3.56nm from Paya Lebar ARP - within Paya Lebar Control Zone). Cranes marked and lighted at night. (NOTAM A1586/22 dated 26/03/2022 is hereby superseded.)



PAGE INTENTIONALLY LEFT BLANK