

Contact

Post:

REPUBLIC OF SINGAPORE
AERONAUTICAL
INFORMATION SERVICES
CIVIL AVIATION AUTHORITY
OF SINGAPORE
SINGAPORE CHANGI
AIRPORT
P.O. BOX 1, SINGAPORE
918141

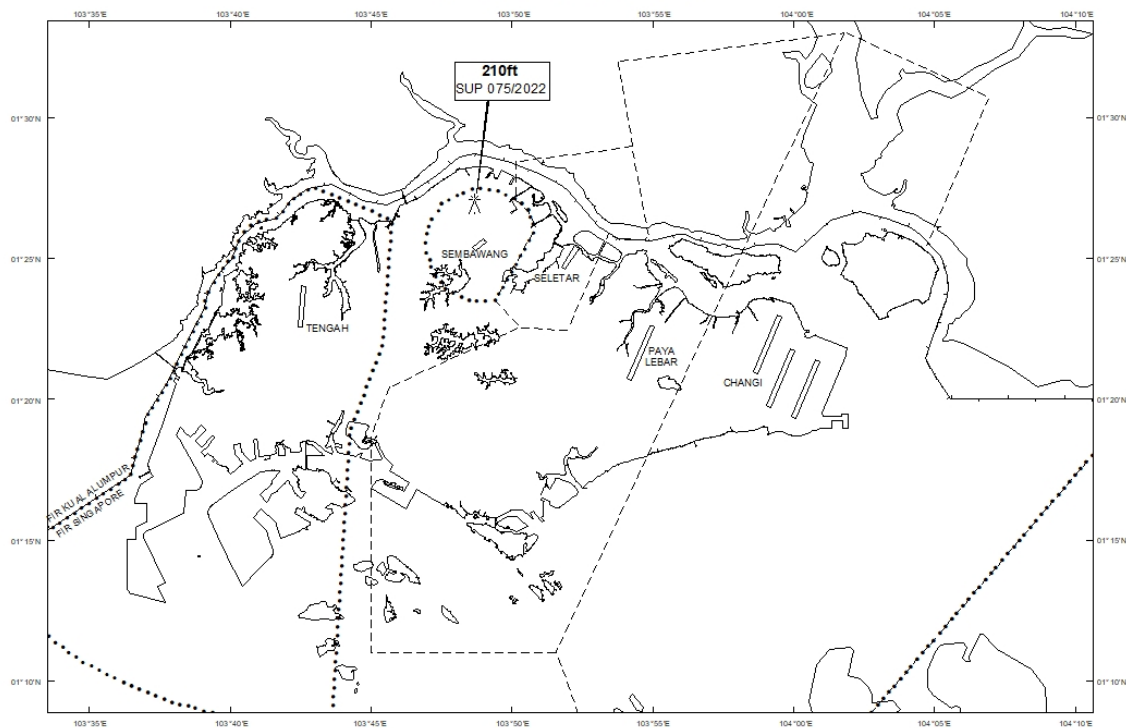
Tel: (65) 6422 7036

AFS: WSSSYNYX

Fax: (65) 64410221

Email: caas_singaporeais@caas.gov.sgURL: www.caas.gov.sgURL: <https://aim-sg.caas.gov.sg>**AIP Supplement for
Singapore****AIP SUP
075/2022****Effective from 05 MAY 2022****/ 09 OCT 2022****Published on 05 MAY 2022****SEMBAWANG AERODROME – MOBILE CRANE**

WIE/2210091559 one mobile crane, height 210ft AMSL, erected at 012655N 1034840E (bearing 347.2 degrees, distance 1.38nm from Sembawang ARP - within Sembawang Aerodrome Traffic Zone). Crane marked and lighted at night. (NOTAM A2108/22 dated 19/04/2022 is hereby superseded.)

LOCATION OF OBSTACLES

PAGE INTENTIONALLY LEFT BLANK