

Contact

Post:

REPUBLIC OF SINGAPORE
AERONAUTICAL
INFORMATION SERVICES
CIVIL AVIATION AUTHORITY
OF SINGAPORE
SINGAPORE CHANGI
AIRPORT
P.O. BOX 1, SINGAPORE
918141

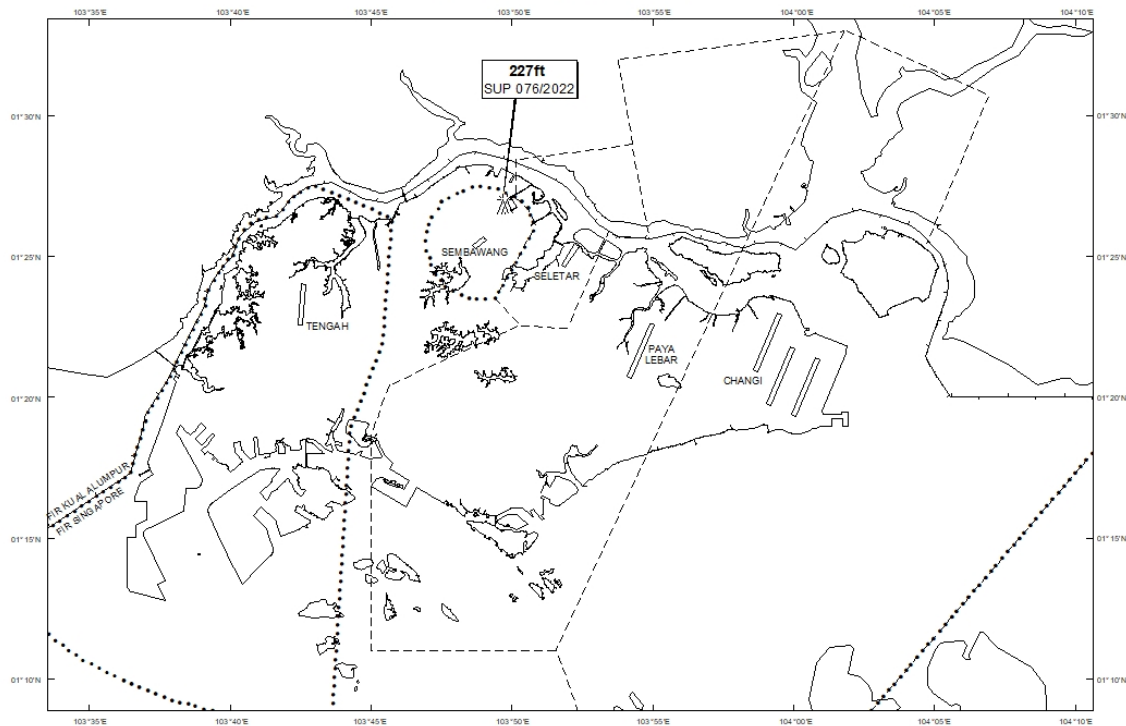
Tel: (65) 6422 7036

AFS: WSSSYNYX

Fax: (65) 64410221

Email: caas_singaporeais@caas.gov.sgURL: www.caas.gov.sgURL: <https://aim-sg.caas.gov.sg>**AIP Supplement for
Singapore****AIP SUP
076/2022****Effective from 05 MAY 2022****/ 11 DEC 2022****Published on 05 MAY 2022****SEMBAWANG AERODROME – CRAWLER CRANES**

WIE/2212111559 two crawler cranes, height 227ft AMSL, erected at 012650N 1034946E (bearing 32.9 degrees, distance 1.47nm from Sembawang ARP - within Sembawang Aerodrome Traffic Zone). Cranes marked and lighted at night. (NOTAM A1821/22 dated 04/04/2022 is hereby superseded.)

LOCATION OF OBSTACLES

PAGE INTENTIONALLY LEFT BLANK