

Contact

Post:

REPUBLIC OF SINGAPORE
AERONAUTICAL
INFORMATION SERVICES
CIVIL AVIATION AUTHORITY
OF SINGAPORE
SINGAPORE CHANGI
AIRPORT
P.O. BOX 1, SINGAPORE
918141

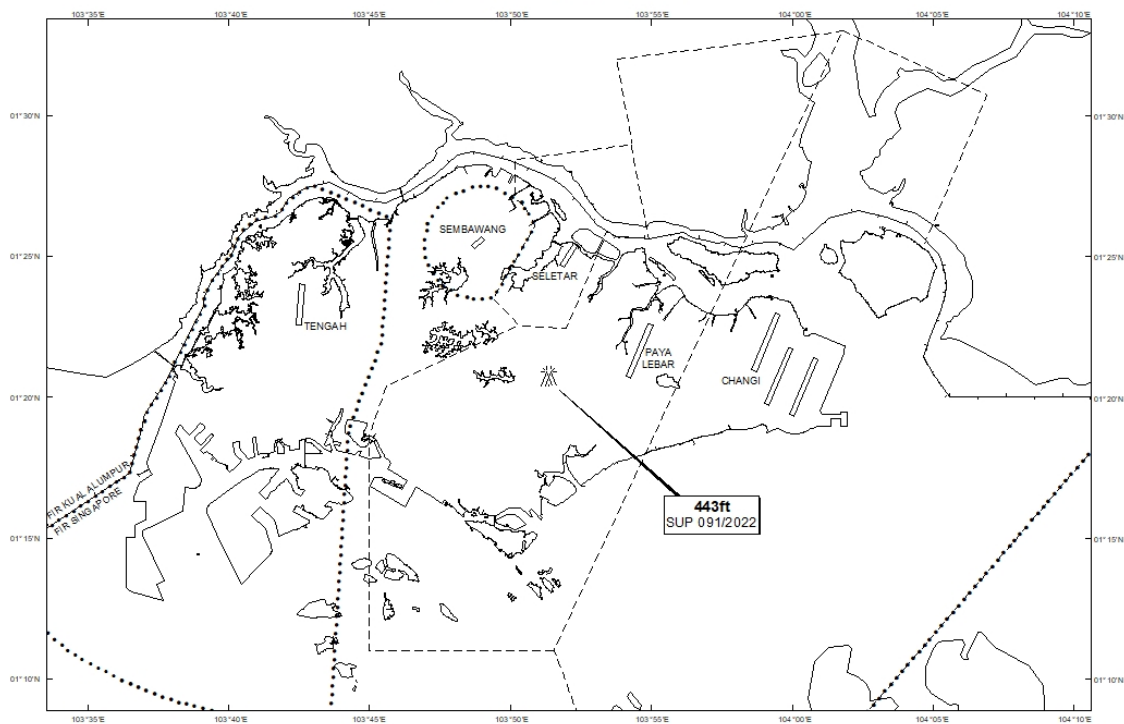
Tel: (65) 6422 7036

AFS: WSSSYNYX

Fax: (65) 64410221

Email: caas_singaporeais@caas.gov.sgURL: www.caas.gov.sgURL: <https://aim-sg.caas.gov.sg>**AIP Supplement for
Singapore****AIP SUP
091/2022****Effective from 07 JUL 2022****/ 31 DEC 2023****Published on 07 JUL 2022****PAYA LEBAR AIRPORT – CRANES**

WIE/2312311559 one luffer crane and three saddle cranes, height 443ft AMSL, erected at 012043N 1035122E (bearing 257.5 degrees, distance 2.86nm from Paya Lebar ARP - within Paya Lebar Control Zone). Cranes marked and lighted at night. (NOTAM A2936/22 dated 20/06/2022 is hereby superseded.)

LOCATION OF OBSTACLES

PAGE INTENTIONALLY LEFT BLANK