

Contact

Post:

REPUBLIC OF SINGAPORE
AERONAUTICAL
INFORMATION SERVICES
CIVIL AVIATION AUTHORITY
OF SINGAPORE
SINGAPORE CHANGI
AIRPORT
P.O. BOX 1, SINGAPORE
918141

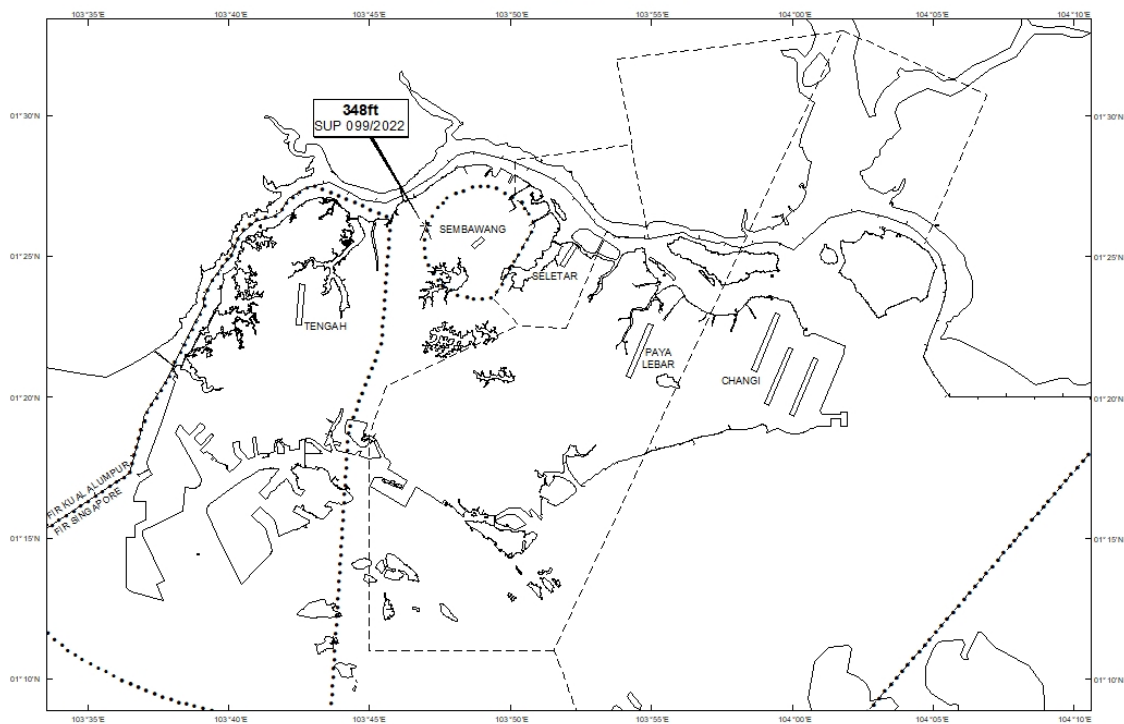
Tel: (65) 6422 7036

AFS: WSSSYNYX

Fax: (65) 64410221

Email: caas_singaporeais@caas.gov.sgURL: www.caas.gov.sgURL: <https://aim-sg.caas.gov.sg>**AIP Supplement for
Singapore****AIP SUP
099/2022****Effective from 07 JUL 2022****/ 30 DEC 2022****Published on 07 JUL 2022****SEMBAWANG AERODROME – CRAWLER CRANE**

WIE/2212301559 one crawler crane, height 348ft AMSL, erected at 012556N 1034658E (bearing 279.5 degrees, distance 2.03nm from Sembawang ARP - within Sembawang Aerodrome Traffic Zone). Crane marked and lighted at night. (NOTAM A2973/22 dated 22/06/2022 is hereby superseded.)

LOCATION OF OBSTACLES

PAGE INTENTIONALLY LEFT BLANK