

Contact

Post:

REPUBLIC OF SINGAPORE
AERONAUTICAL
INFORMATION SERVICES
CIVIL AVIATION AUTHORITY
OF SINGAPORE
SINGAPORE CHANGI
AIRPORT
P.O. BOX 1, SINGAPORE
918141

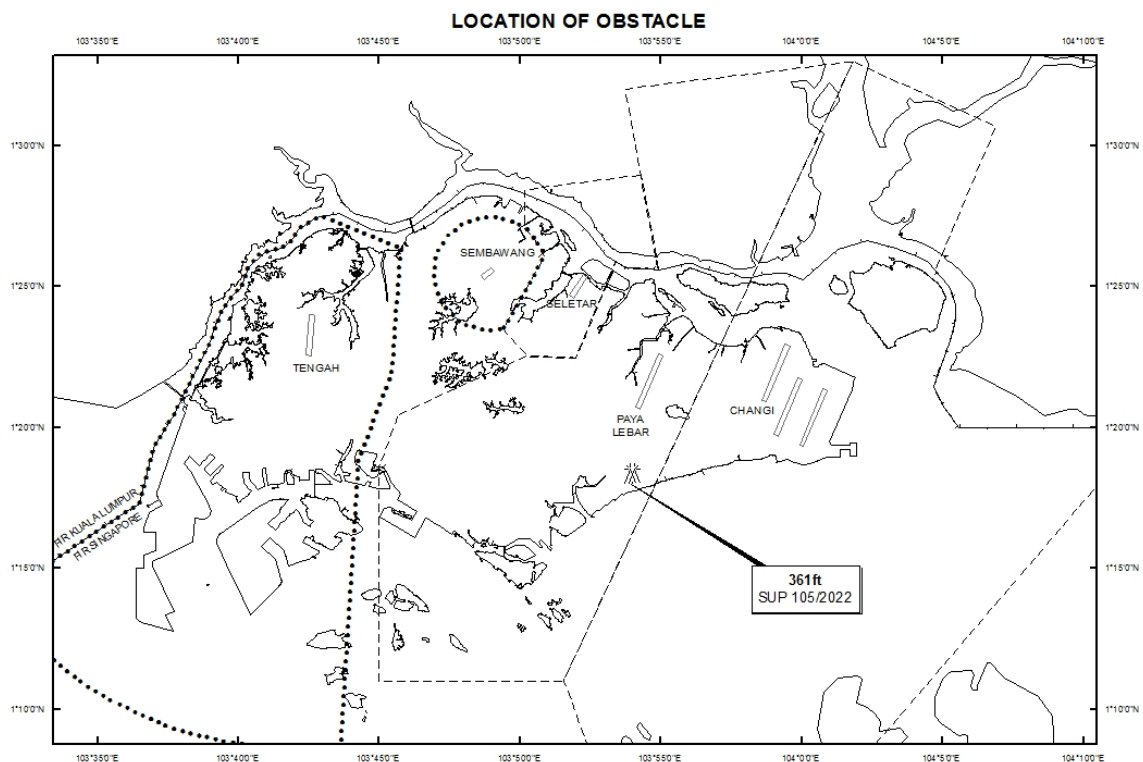
Tel: (65) 6422 7036

AFS: WSSSYNYX

Fax: (65) 64410221

Email: caas_singaporeais@caas.gov.sgURL: www.caas.gov.sgURL: <https://aim-sg.caas.gov.sg>**AIP Supplement for
Singapore****AIP SUP
105/2022****Effective from 04 AUG 2022****/ 30 JUL 2023****Published on 04 AUG 2022****PAYA LEBAR AIRPORT – CRANES**

WIE/2307301559 one saddle tower crane and two luffing cranes, height 361ft AMSL, erected at 011806N 1035359E (bearing 183.2 degrees, distance 3.26nm from Paya Lebar ARP - within Paya Lebar Control Zone). Cranes marked and lighted at night. (NOTAM A3196/22 dated 28/07/2022 is hereby superseded.)



PAGE INTENTIONALLY LEFT BLANK