

**Contact**

Post:

REPUBLIC OF SINGAPORE  
AERONAUTICAL  
INFORMATION SERVICES  
CIVIL AVIATION AUTHORITY  
OF SINGAPORE  
SINGAPORE CHANGI  
AIRPORT  
P.O. BOX 1, SINGAPORE  
918141

Tel: (65) 6422 7036

AFS: WSSSYNYX

Fax: (65) 64410221

Email: [caas\\_singaporeais@caas.gov.sg](mailto:caas_singaporeais@caas.gov.sg)URL: [www.caas.gov.sg](http://www.caas.gov.sg)URL: <https://aim-sg.caas.gov.sg>**AIP Supplement for  
Singapore****AIP SUP  
162/2022****Effective from 31 JAN 2023****/ 30 JAN 2024****Published on 22 DEC 2022**

## SINGAPORE CHANGI AIRPORT – PARTIAL CLOSURE OF TAXILANES R1, R2, R3, AND CLOSURE OF AIRCRAFT STANDS E4 AND F34 FOR CONSTRUCTION WORK ACTIVITIES AT TERMINAL 2

**1 INTRODUCTION**

1.1 This AIP Supplement is to inform airline operators and pilots of the closure of Taxilanes R1, R2, R3, and aircraft stands E4 and F34 to facilitate construction work activities at Terminal 2 in Singapore Changi Airport from **31 January 2023, 1700UTC** to **30 January 2024, 2200UTC**.

1.2 Please refer to Appendix A1 and Appendix A2 for the location of the construction zone. The work zone will be demarcated by barricades and supplemented with visual aids.

**2 CLOSURE OF TAXILANES AND AIRCRAFT STANDS**

2.1 Closure of taxilanes and aircraft stands affected by the works are tabulated below.

<b>Taxilanes/Aircraft stands</b>	<b>Closure period</b>	<b>Chart</b>
TXL R1 behind aircraft stand E5	From 31 January 2023, 1700UTC To 14 September 2023, 2200UTC	Appendix A1
TXL R2 between junction of TXL R1/TXL R2/TXL R3 and TWY T	From 31 January 2023, 1700UTC To 30 January 2024, 2200UTC	
Aircraft Stand E4	From 31 January 2023, 1700UTC To 30 January 2024, 2200UTC	
Aircraft Stand F34 and TXL R3 behind aircraft stand	From 15 September 2023, 1700UTC To 30 January 2024, 2200UTC	Appendix A2

**3 TEMPORARY CHANGES TO GROUND MARKINGS AND LIGHTING**

3.1 Lead-in line markings for aircraft stands E4 and F34 will be revised.

3.2 Airfield lighting on unserviceable areas of Taxilanes R1, R2, R3, and aircraft stands E4 and F34 will be switched off. Unwanted markings in these areas will also be temporarily removed.

3.3 Temporary closed taxiway markers and marker boards will be placed at Taxilanes R1, R2, R3, and aircraft stands E4 and F34.

3.4 Due to temporary changes in visual aids and aircraft pushback procedures at the affected taxilanes and aircraft stands, pilots are to pay extra attention to visual aids and ATC instructions when taxiing in the vicinity of the closed work areas.

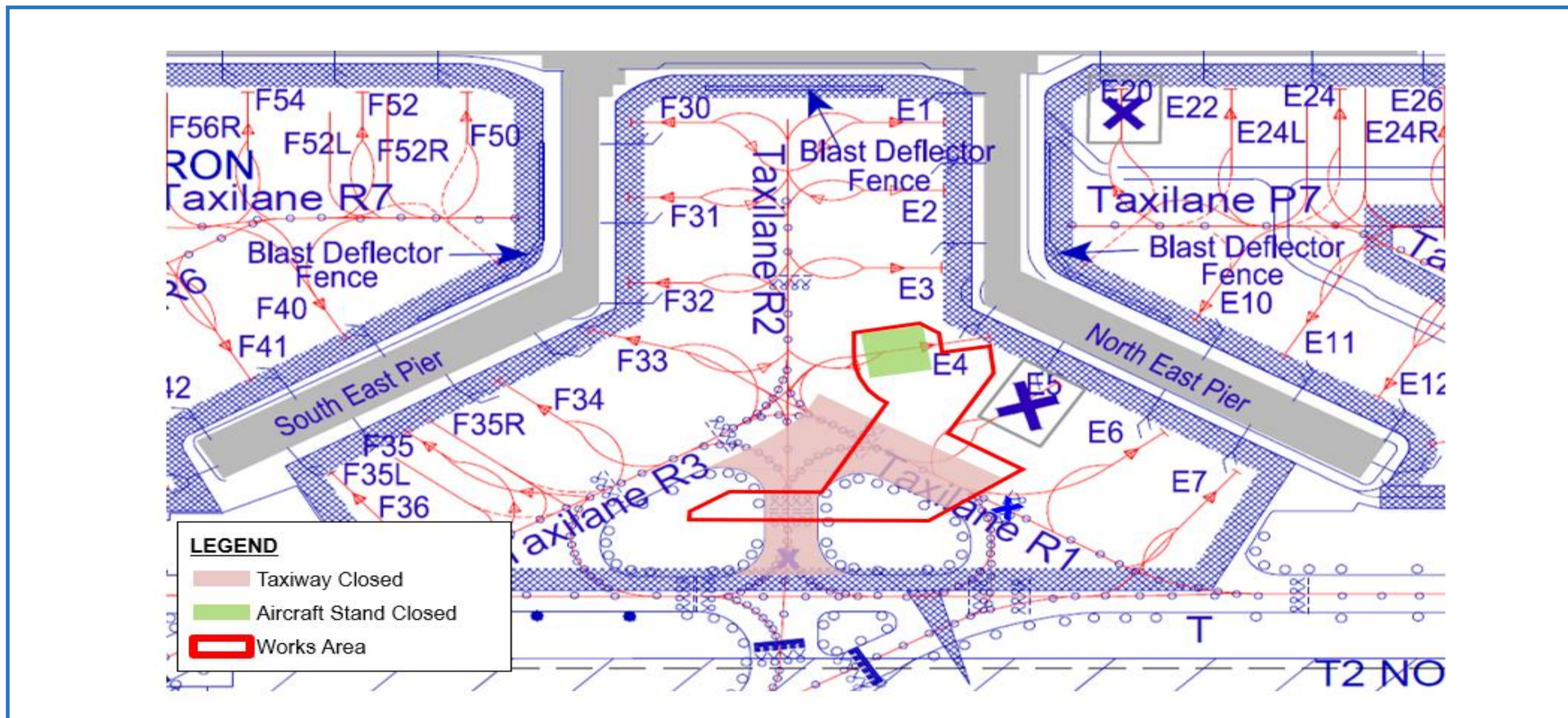
3.5 Please see Appendix B1 and Appendix B2 for the details of the temporary changes to ground markings.

#### **4 CONCLUSION**

4.1 Any change to the contents of this AIP Supplement will be notified through NOTAM.

Enlarged location plan for closure of Taxilane R1 behind aircraft stand E5, TXL R2 between junction of TXL R1/TXL R2/TXL R3 and TWY T, aircraft stand E4 .....	<a href="#">Appendix A1</a>
Enlarged location plan for closure of aircraft stand F34 and Taxilane R3 behind aircraft stand .....	<a href="#">Appendix A2</a>
Revision to ground markings of Taxilane R1 behind aircraft stand E5, TXL R2 between junction of TXL R1/TXL R2/TXL R3 and TWY T, aircraft stand E4 .....	<a href="#">Appendix B1</a>
Revision to ground markings of aircraft stand F34, F35, F35L, F35R and F36 lead-in lines, Taxilane R3 behind aircraft stand F34 .....	<a href="#">Appendix B2</a>

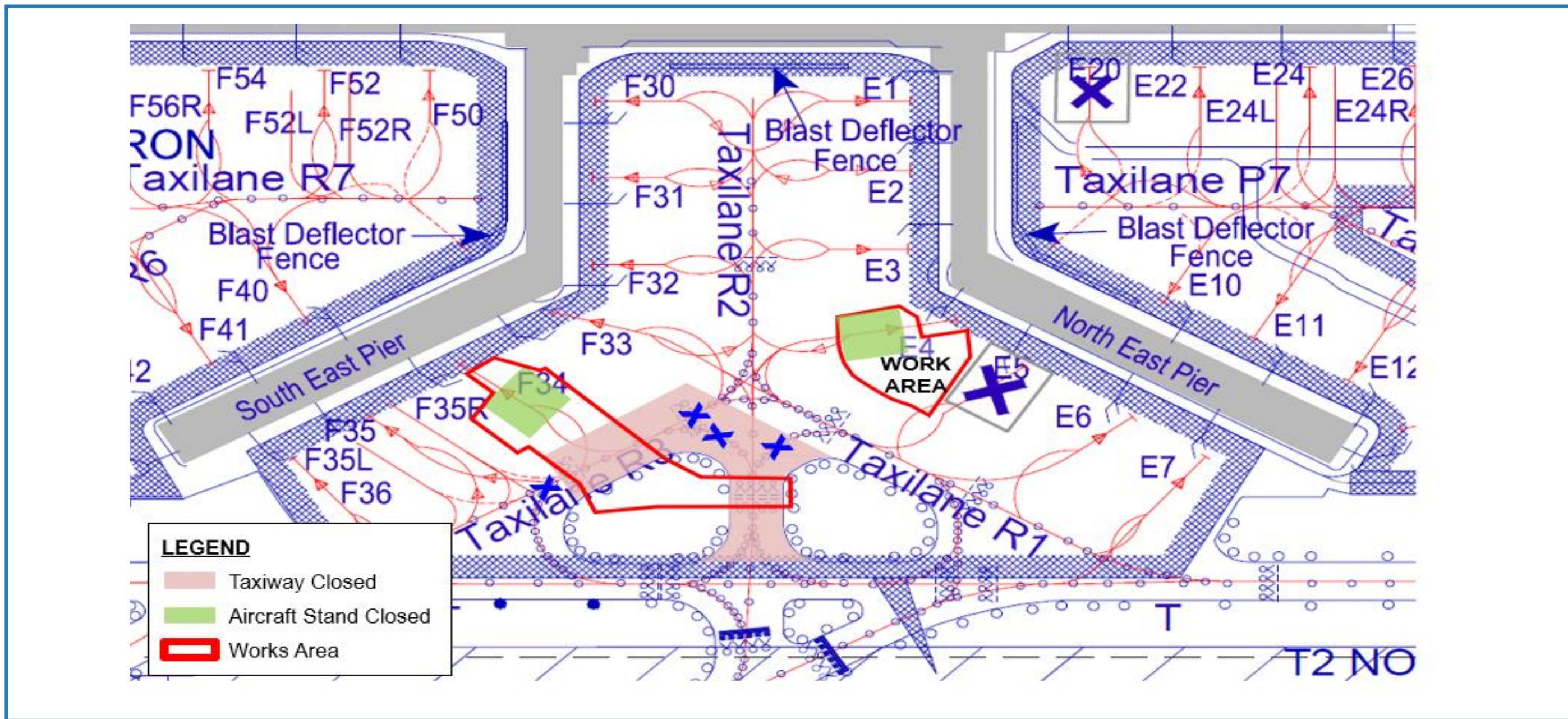
**ENLARGED LOCATION PLAN FOR CLOSURE OF TAXILANE R1 BEHIND AIRCRAFT STAND E5,  
 TXL R2 BETWEEN JUNCTION OF TXL R1/TXL R2/TXL R3 AND TWY T, AIRCRAFT STAND E4,  
 SINGAPORE CHANGI AIRPORT TERMINAL 2,  
 WITH EFFECT FROM 31 JANUARY 2023, 1700UTC TO 14 SEPTEMBER 2023, 2200UTC**



*PAGE INTENTIONALLY LEFT BLANK*



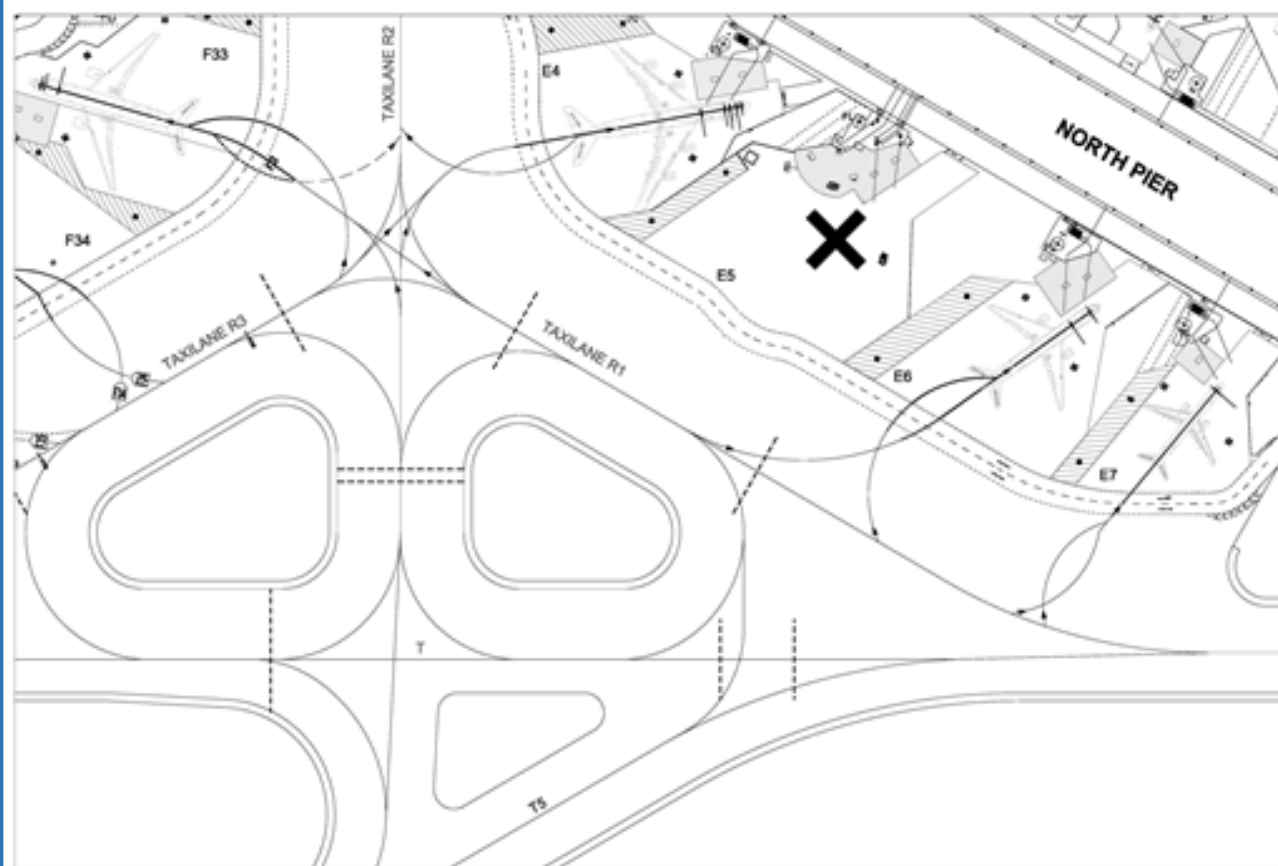
**ENLARGED LOCATION PLAN FOR CLOSURE OF  
AIRCRAFT STAND F34 AND TAXILANE R3 BEHIND AIRCRAFT STAND,  
SINGAPORE CHANGI AIRPORT TERMINAL 2,  
WITH EFFECT FROM 15 SEPTEMBER 2023, 1700UTC To 30 JANUARY 2024, 2200UTC**



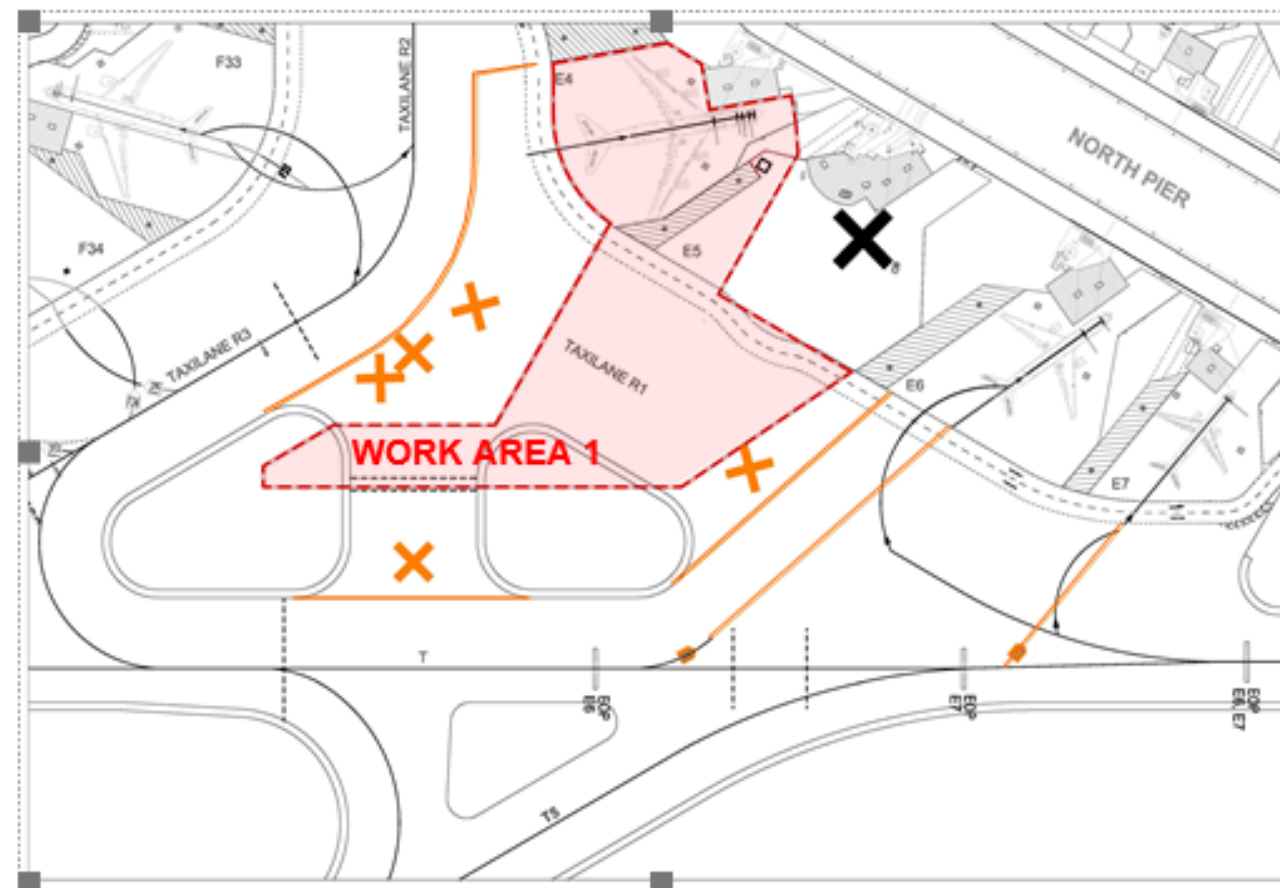
*PAGE INTENTIONALLY LEFT BLANK*



**REVISION TO GROUND MARKINGS OF TAXILANE R1 BEHIND AIRCRAFT STAND E5,  
TXL R2 BETWEEN JUNCTION OF TXL R1/TXL R2/TXL R3 AND TWY T, AIRCRAFT STAND E4,  
SINGAPORE CHANGI AIRPORT TERMINAL 2  
WITH EFFECT FROM 31 January 2023, 1700UTC TO 14 September 2023, 2200UTC**



**EXISTING AIRCRAFT STANDS E4, E6 AND E7 LEAD-IN LINES,  
TAXILANES R1, R2 AND TAXIWAY T MARKINGS**

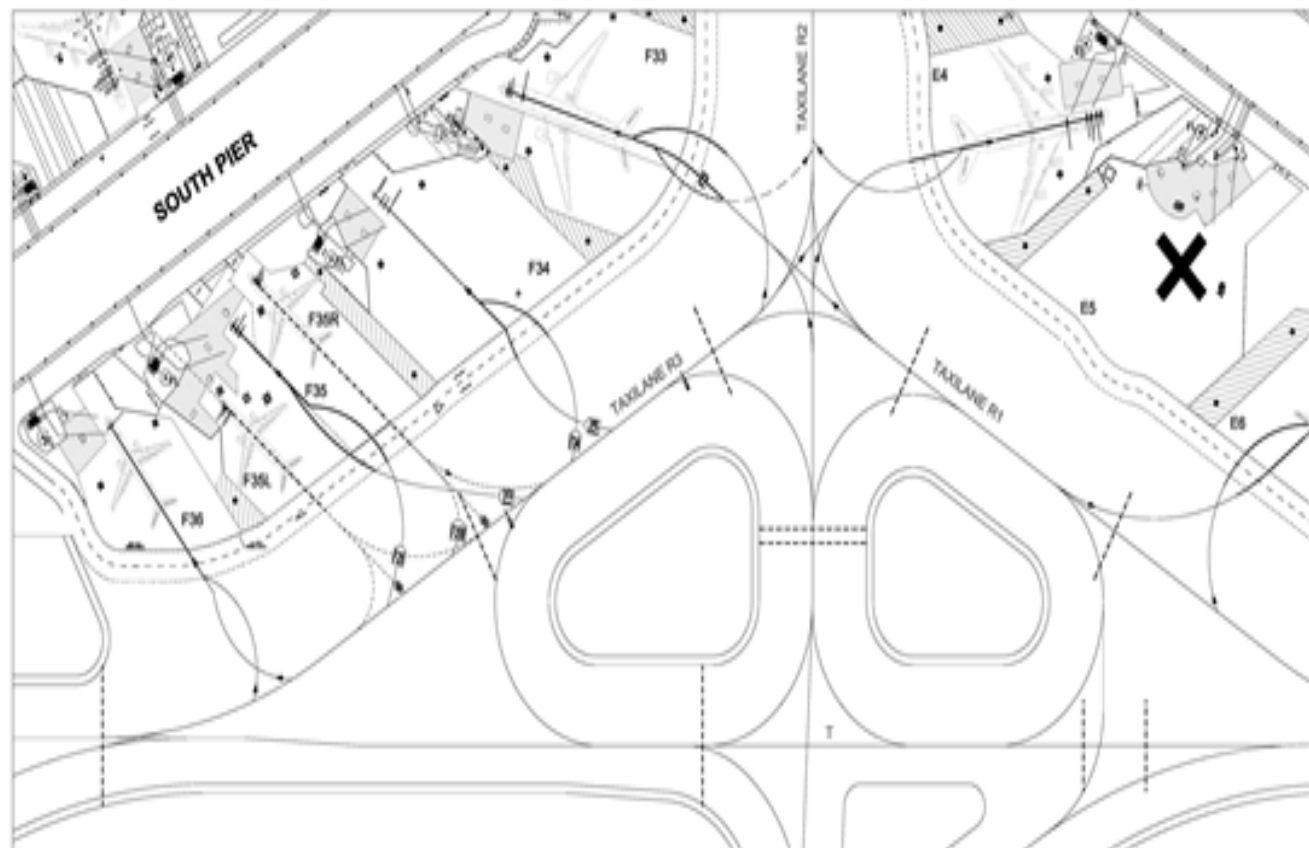


**REVISION AT AIRCRAFT STANDS E4, E6 AND E7 LEAD-IN LINES,  
TAXILANES R1, R2 AND TAXIWAY T MARKINGS**

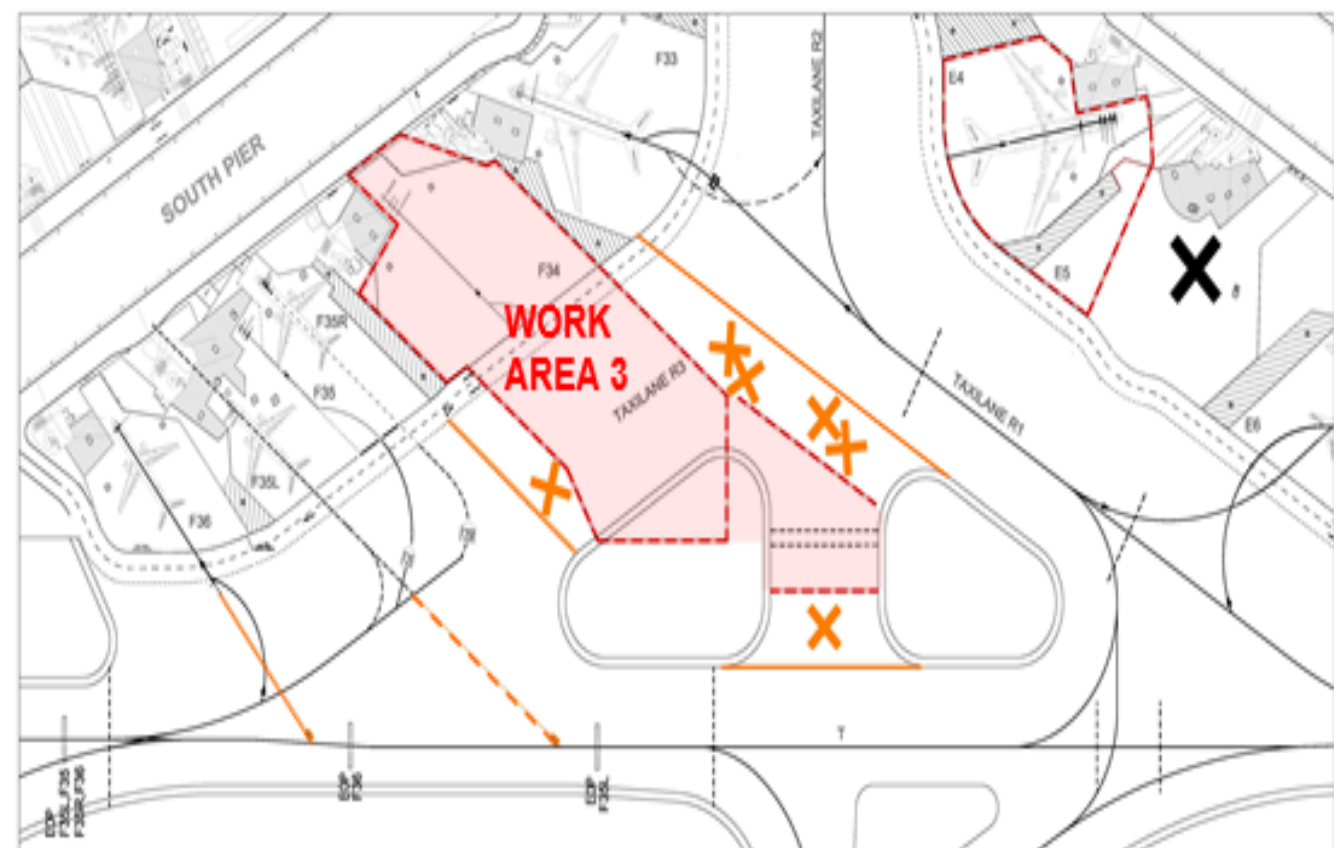
*PAGE INTENTIONALLY LEFT BLANK*



**REVISION TO GROUND MARKINGS OF AIRCRAFT STAND F34, F35, F35L, F35R AND F36 LEAD-IN LINES, TAXILANE R3 BEHIND AIRCRAFT STAND F34, SINGAPORE CHANGI AIRPORT TERMINAL 2, WITH EFFECT FROM 15 September 2023, 1700UTC To 30 January 2024, 2200UTC**



**EXISTING AIRCRAFT STANDS F34, F35, F35L, F35R, F36 LEAD-IN LINES, TAXILANE R3 AND TAXIWAY T MARKINGS**



**REVISION AT AIRCRAFT STANDS F34, F35, F35L, F35R, F36 LEAD-IN LINES, TAXILANE R3 AND TAXIWAY T MARKINGS**

*PAGE INTENTIONALLY LEFT BLANK*