

Contact

Post:

REPUBLIC OF SINGAPORE
AERONAUTICAL
INFORMATION SERVICES
CIVIL AVIATION AUTHORITY
OF SINGAPORE
SINGAPORE CHANGI
AIRPORT
P.O. BOX 1, SINGAPORE
918141

Tel: (65) 6422 7036

AFS: WSSSYNYX

Fax: (65) 64410221

Email: caas_singaporeais@caas.gov.sgURL: www.caas.gov.sgURL: <https://aim-sg.caas.gov.sg>**AIP Supplement for
Singapore****AIP SUP
166/2023****Effective from 15 FEB 2024****/ 25 FEB 2024****Published on 08 DEC 2023****FLYING DISPLAYS IN CONJUNCTION WITH THE SINGAPORE AIRSHOW 2024
EXHIBITION FROM THURSDAY 15 FEBRUARY TO SUNDAY 25 FEBRUARY 2024****1 INTRODUCTION**

1.1 Flying displays will be conducted during the Singapore Airshow 2024 Exhibition from 20 to 22 February 2024 and 24 to 25 February 2024. Prior to the Exhibition, practices and rehearsals will be conducted from 15 to 19 February 2024.

1.2 During the periods of practices, rehearsals and flying displays, designated airspace around the Singapore Changi Airport will be closed to non-participating aircraft.

**2 RESTRICTIONS AND CLOSURES OF SINGAPORE CHANGI AIRPORT AND DESIGNATED
AIRSPACE FOR THE AIRSHOW**

2.1 Details of the period of closures for Singapore Changi Airport and the designated airspace are shown in Annex A.

2.2 The airspace to be closed is bounded by the following coordinates:

012517N 1035814E, thence clockwise along the Singapore / Kuala Lumpur FIR boundary, 012017N 1040522E, 011707N 1035618E, 011835N 1035658E, thence anti-clockwise along the eastern coastline of Singapore, 012254N 1035707E and 012517N 1035814E.

2.3 The vertical limits of the airspace closure will be from Ground / Sea Level up to 10,000ft AMSL. Please refer to Annex B for the chart showing the area of the airspace closure.

2.4 Aircraft operators are advised to plan their flights to arrive at or depart from Singapore Changi Airport well before the closure times to avoid the possibility of flights being delayed until the airport and airspace are re-opened.

2.5 Aircraft operators are advised to take into consideration possibilities of airborne delay and plan for sufficient fuel with at least 20 minutes of holding.

**3 AIR TRAFFIC FLOW MANAGEMENT (ATFM) MEASURES FOR FLIGHTS ARRIVING AT
SINGAPORE CHANGI AIRPORT**

3.1 ATFM measures, where necessary, will be in place to regulate the air traffic flow to match the prevailing capacity prior to and after the re-opening of Singapore Changi Airport. Please refer to AIP Singapore ENR 1.9 for details on ATFM procedures.

3.2 When ATFM ground delay programme is implemented, flights arriving at Singapore Changi Airport which are issued with a Calculated Take-Off Time (CTOT) shall comply with the restriction. The compliance window of minus 5 / plus 10 minutes will be measured for CTOT. To ensure orderly flow of traffic arriving at Singapore Changi Airport, flights that are non-compliant or not part of the ground delay programme may expect delay, subject to real-time traffic.

Annex A

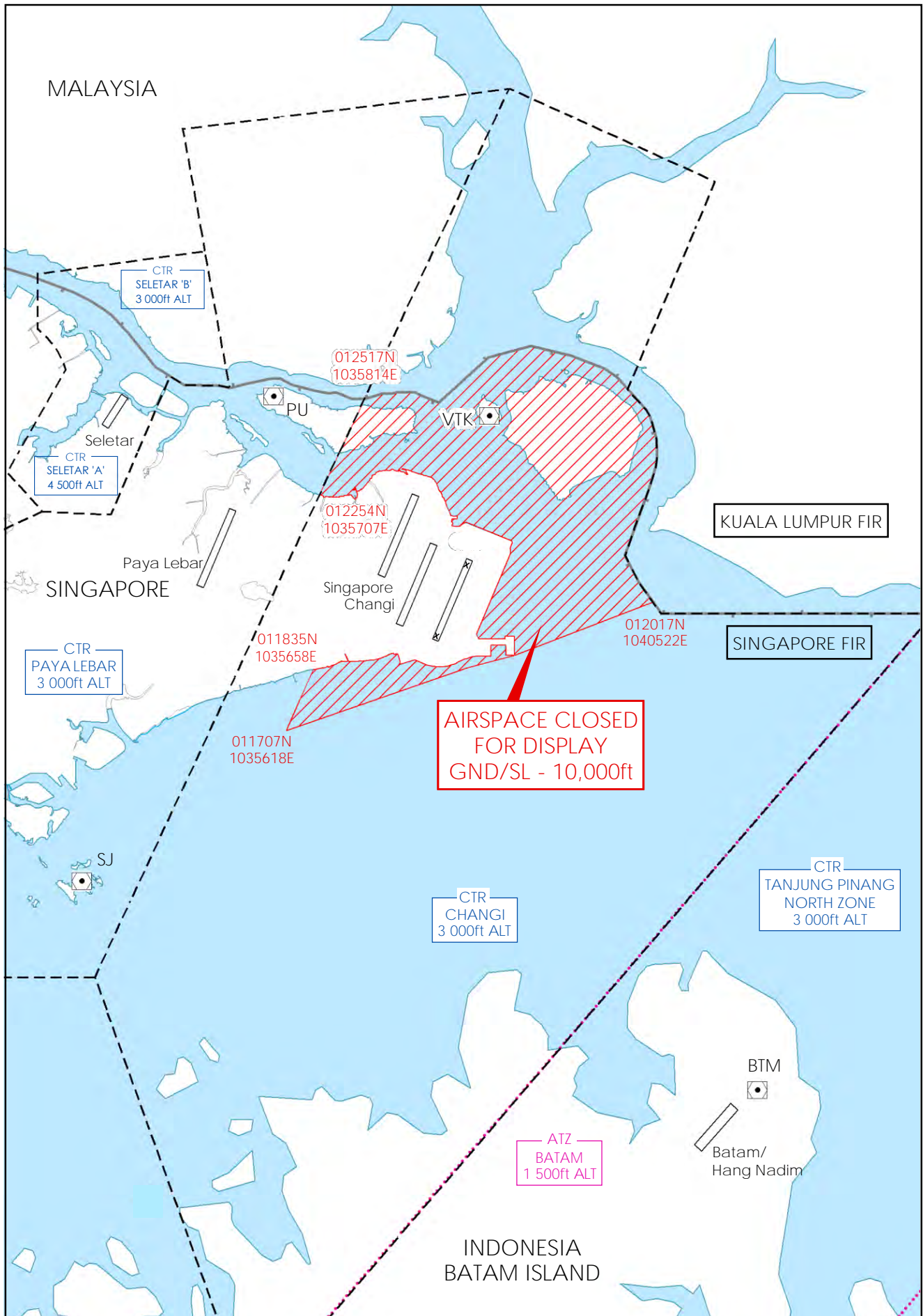
**Closure of Singapore Changi Airport and airspace during the
Singapore Airshow 2024 Exhibition Flying Displays**

Details of the period of closures of Singapore Changi Airport and airspace are shown below:

Type of Activity		Day / Date	Timing (UTC)
a)	Practices	Thursday / 15 February 2024	0230 – 0315
		Friday / 16 February 2024	0230 – 0308
		Saturday / 17 February 2024	0230 – 0336
b)	Combined Rehearsals	Sunday / 18 February 2024	0230 – 0359
		Monday / 19 February 2024	0230 – 0329
c)	Flying Displays	Tuesday / 20 February 2024	0430 – 0559
		Wednesday / 21 February 2024	0330 – 0422
		Thursday/ 22 February 2024	0330 – 0422
		Saturday / 24 February 2024	0330 – 0415
			0630 – 0713
		Sunday / 25 February 2024	0330 – 0413
			0630 – 0715

Airspace closure for flying displays [Annex B](#)

SINGAPORE AIRSHOW 2024 EXHIBITION AIRSPACE CLOSURE FOR FLYING DISPLAYS



PAGE INTENTIONALLY LEFT BLANK