

Contact

Post:

REPUBLIC OF SINGAPORE
AERONAUTICAL
INFORMATION SERVICES
CIVIL AVIATION AUTHORITY
OF SINGAPORE
SINGAPORE CHANGI
AIRPORT
P.O. BOX 1, SINGAPORE
918141

Tel: (65) 6422 7036

AFS: WSSSYNYX

Fax: (65) 64410221

Email: caas_singaporeais@caas.gov.sgURL: www.caas.gov.sgURL: <https://aim-sg.caas.gov.sg>**AIP Supplement for
Singapore****AIP SUP
134/2024****Effective from 30 AUG 2024****/ 02 OCT 2025****Published on 30 AUG 2024**

SINGAPORE CHANGI AIRPORT – TEMPORARY CLOSURE OF TAXILANE N4 BEHIND AIRCRAFT STAND 604 AND DOWNGRADE OF AIRCRAFT STAND 603 TO CODE C

1 INTRODUCTION

1.1 This AIP Supplement is to inform airline operators and pilots that due to extended work activities at East Cargo Apron in Singapore Changi Airport Taxilane N4 behind aircraft stand 604 will be temporarily closed and adjacent aircraft stand 603 will be downgraded to Code C for the period tabulated below:

Taxilane / Aircraft stand	Period	Chart
Closure of Taxilane N4 behind aircraft stand 604	From 30 August 2024, 1100UTC	Annex A
Downgrading of aircraft stand 603 to Code C	To 02 October 2025, 1100UTC	

2 DETAILS ON THE CLOSURE OF TAXILANE N4 BEHIND AIRCRAFT STAND 604

2.1 Ground markings leading into the closed section of Taxilane N4 will be removed, and taxiway guidance signs will be masked out.

2.2 Centreline lights and edge lights leading into and within the closed area will be masked out or isolated.

2.3 Temporary ground markings such as:

- i. Taxilane side stripe markings (double yellow line) and blue reflective taxilane edge markers will be provided to demarcate the edge of usable taxilane.
- ii. Taxilane closed markers (yellow crosses) will be provided to demarcate the closed part of Taxilane N4 behind aircraft stand 604.

2.4 Unserviceability lights and markers (marker boards) will be placed across the breath of the closed taxilane.

2.5 Due to the temporary closure, changes in aircraft pushback procedures will be implemented at East Cargo Apron. Pilots are to pay extra attention to ATC instructions when taxiing in the vicinity of the work area.

2.6 Please refer to **Annex A** for the enlarged location plan of Taxilane N4 at East Cargo Apron and **Annex B** for a visualisation of the closed section of Taxilane N4 behind aircraft stand 604.

3 CHANGES

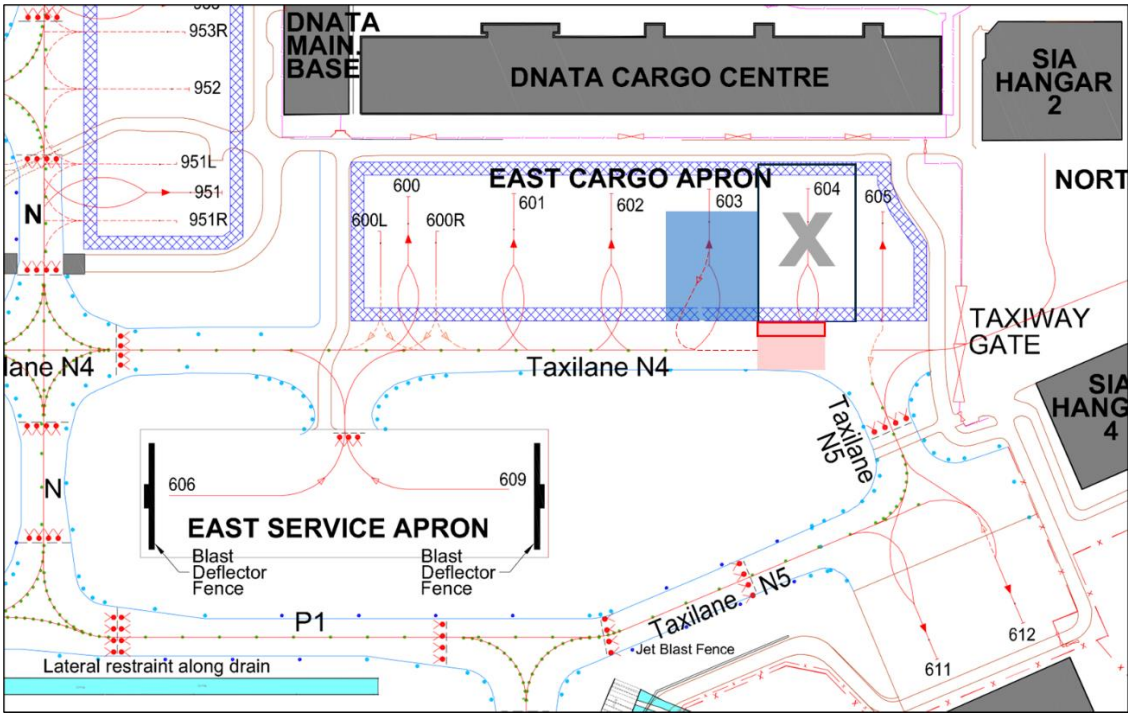
3.1 This AIP Supplement will supersede AIRAC AIP Supplement 140/2023 dated 10 October 2023.

3.2 Any change to the contents of this AIP Supplement will be notified through NOTAM.




Enlarged location plan of Taxilane N4 behind aircraft stand 604 [Annex A](#)
 Visualisation of Taxilane N4 closure behind aircraft stand 604 [Annex B](#)

PAGE INTENTIONALLY LEFT BLANK

Enlarged Location Plan of closed section of Taxilane N4 behind Aircraft Stand 604, and Downgrade of Aircraft Stand 603 to Code C, Singapore Changi Airport



Legend

-  Taxilane N4 behind Aircraft Stand 604 closed
-  Work Area
-  Aircraft Stand 603 downgraded to Code C

Publication Date: 30 Aug 2024

PAGE INTENTIONALLY LEFT BLANK

Visualisation of Taxiway N4 closure behind Aircraft Stand 604, Singapore Changi Airport

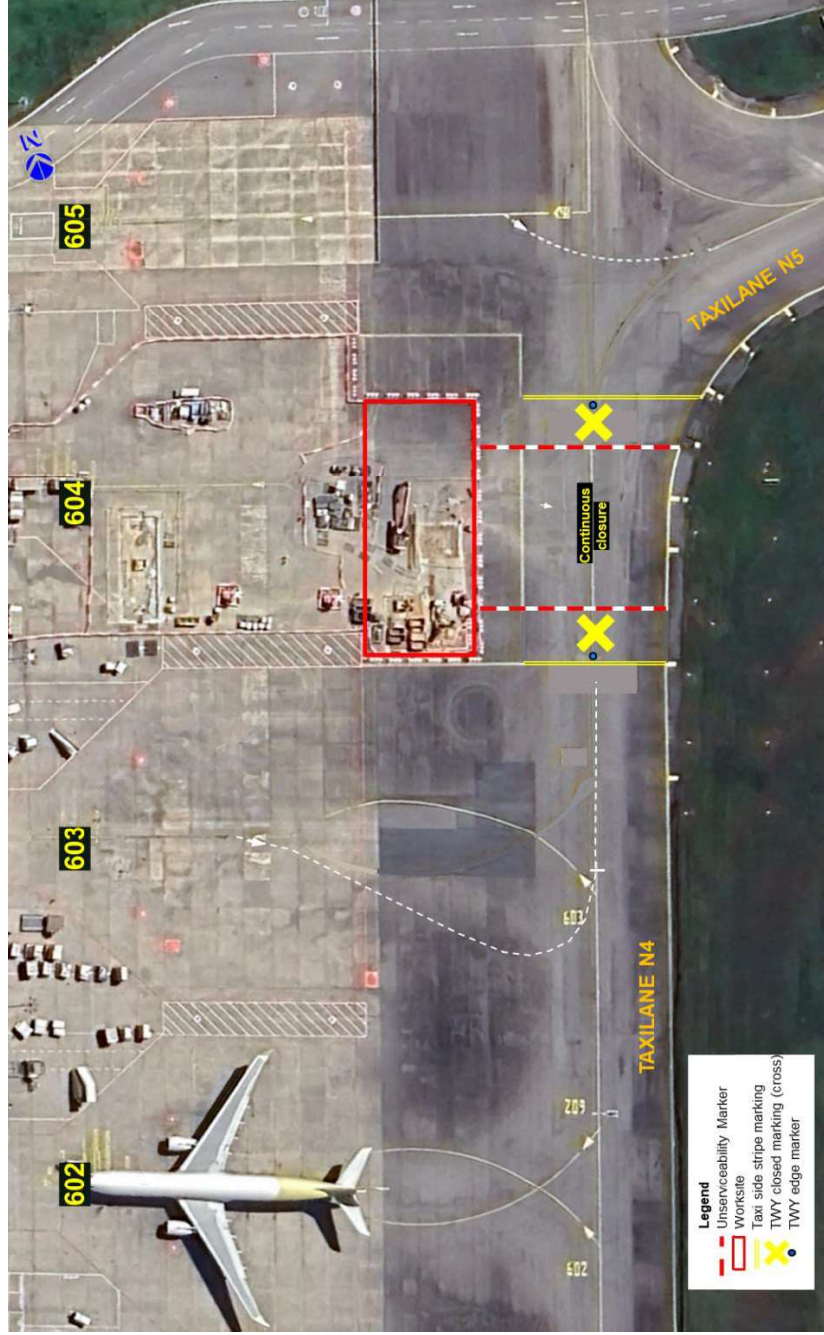


Diagram not to scale & for illustration only.

Publication Date: 30 Aug 2024

PAGE INTENTIONALLY LEFT BLANK