

Contact

Post: REPUBLIC OF SINGAPORE
AERONAUTICAL INFORMATION SERVICES
Civil Aviation Authority of Singapore
60 Airport Boulevard,
Changi Airport Terminal 2, #04-01
Singapore 819643

Tel: (65) 6955 0400
Fax: (65) 6441 0221
AFS: WSSSYNYX
Email: caas_singaporeais@caas.gov.sg
URL: <https://www.caas.gov.sg>
URL: <https://aim-sg.caas.gov.sg>

**AIP Supplement for
Singapore**

Civil Aviation Authority of Singapore

**AIRAC AIP SUP
148/2025****Effective from
30 OCT 2025****to
31 MAR 2026****Published on
18 SEP 2025****SINGAPORE CHANGI AIRPORT – TEMPORARY CLOSURE AT THE JUNCTION OF TAXIWAY
W1, TAXIWAY W AND TAXIWAY V1****1 INTRODUCTION**

1.1 This AIP Supplement informs airline operators and pilots of the temporary closure at the junction of Taxiway W1, Taxiway W and Taxiway V1, in Singapore Changi Airport, from **30 October 2025, 0800UTC to 31 March 2026, 0800UTC**.

2 DETAILS ON THE CLOSURE OF JUNCTION OF TAXIWAY W1, TAXIWAY W AND TAXIWAY V1

2.1 To facilitate upcoming construction work activities, junction of Taxiway W1, Taxiway W and Taxiway V1 will be closed.

2.2 Please refer to **Appendix A** for the enlarged location plan of the closed section at the junction of Taxiway W1, Taxiway W and Taxiway V1 and **Appendix B** for a visualisation of the closed section.

3 CONCLUSION

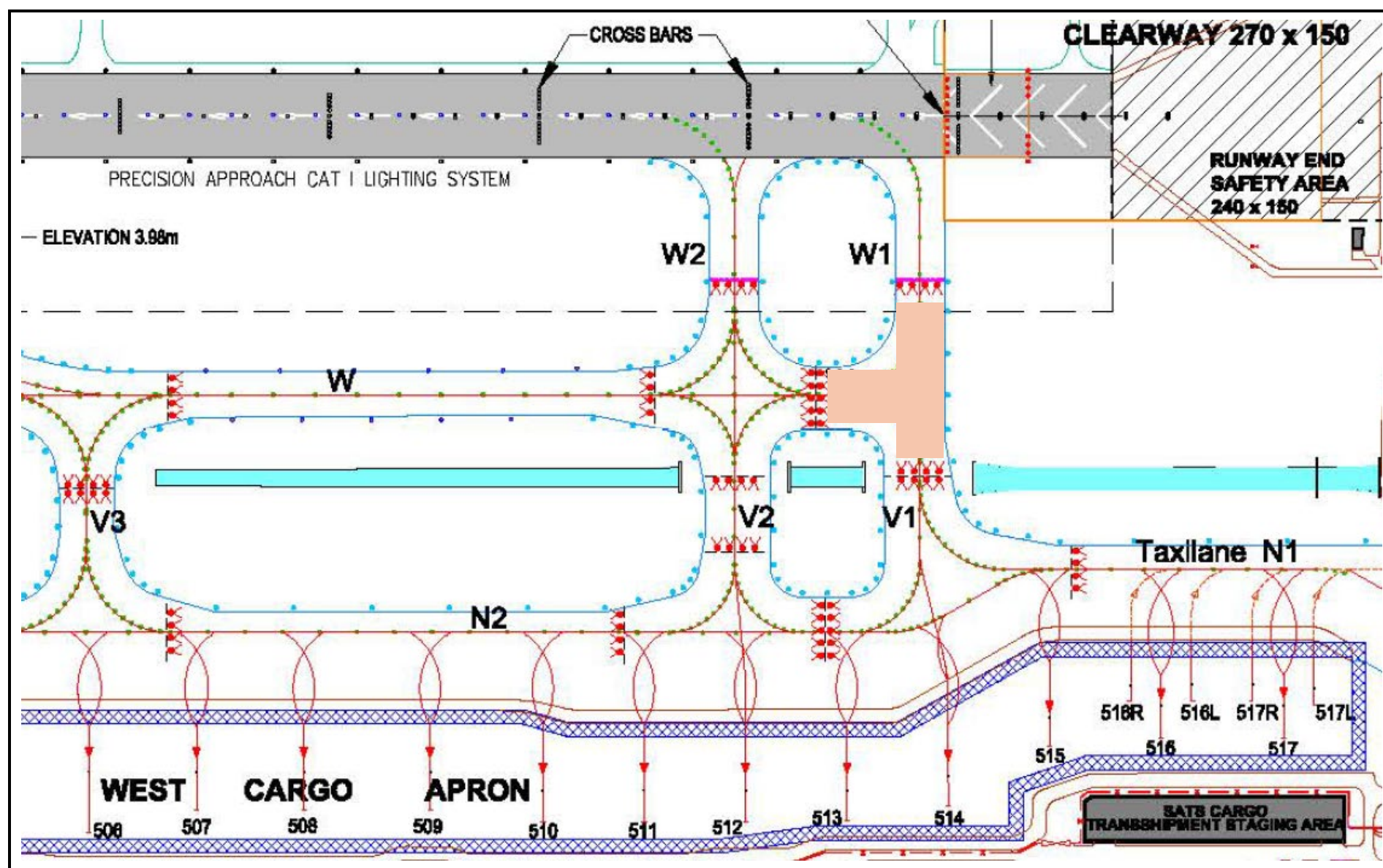
3.1 Any change to the contents of this AIP supplement will be notified through NOTAM.

Enlarged location plan of the closed section - Appendix A

Visualisation of the closed section - Appendix B

Intentionally Left Blank

**Enlarged Location Plan of Closed Section at
Junction of Taxiway W1, Taxiway W and Taxiway V1, Singapore Changi Airport**



Legend

Junction of Taxiway W1, W and V1 closed

Publication Date: 18 September 2025
Effective Date: 30 October 2025

Intentionally Left Blank

Visualisation of Junction at Taxiway W1, Taxiway W and Taxiway V1 Closure, Singapore Changi Airport

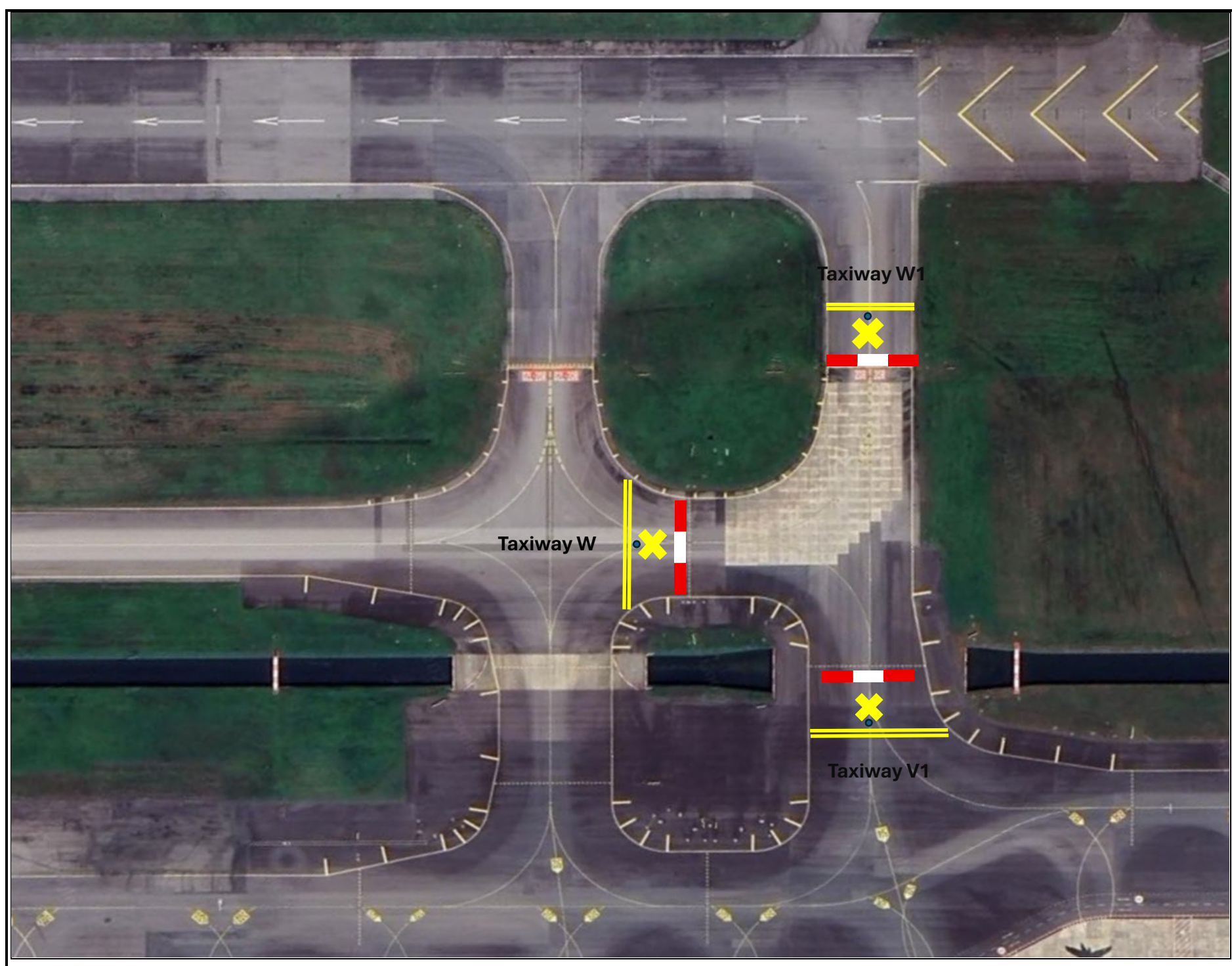


Diagram for illustration purpose only and not to scale

Legend

- ■ Unserviceability Marker
- ✕ Taxiway Closed Marking
- ▬▬ Taxi Side Strip Marking
- Taxiway Edge Marker

Publication Date: 18 September 2025
Effective Date: 30 October 2025

Intentionally Left Blank