

**Contact**

Post: REPUBLIC OF SINGAPORE  
AERONAUTICAL INFORMATION SERVICES  
Civil Aviation Authority of Singapore  
60 Airport Boulevard,  
Changi Airport Terminal 2, #04-01  
Singapore 819643

Tel: (65) 6955 0400  
Fax: (65) 6441 0221  
AFS: WSSSYNYX  
Email: [caas\\_singaporeais@caas.gov.sg](mailto:caas_singaporeais@caas.gov.sg)  
URL: <https://www.caas.gov.sg>  
URL: <https://aim-sg.caas.gov.sg>

## AIP Supplement for Singapore



## AIRAC AIP SUP 002/2026

Effective from  
19 FEB 2026

to  
05 AUG 2026

Published on  
08 JAN 2026

### SINGAPORE CHANGI AIRPORT – UPDATED INFORMATION AND DATA FOR RUNWAY 02R/20L

#### 1 INTRODUCTION

1.1 This AIRAC AIP Supplement informs aircraft operators of the updated information and data for Runway 02R/20L.

1.2 Runway 02R/20L will not be available for civil use from **19 February 2026, 0000UTC to 05 August 2026, 2359UTC**. Please see **Annex A** for the location of Runway 02R/20L.

#### 2 RUNWAY 02R/20L INFORMATION AND DATA

2.1 The updated information and data for Runway 02R/20L should be read in conjunction with AIP Singapore, Section WSSS AD 2 AERODROMES:

WSSS AD 2.2 AERODROME GEOGRAPHICAL AND ADMINISTRATIVE DATA	
AD Administration, address, telephone, telefax, AFS	
<u>For RWY 02R/20L</u>	
Republic of Singapore Air Force Headquarters, Changi Air Base 508A, Cranwell Road Singapore 509863 Tel: (65) 65864033 (Base Operations)	
Remarks	
RWY 02R/20L is not available for civil use	

WSSS AD 2.3 OPERATIONAL HOURS	
Aerodrome Administration	<u>For RWY 02R/20L</u> 2300-1100 SUN/MON to THU/FRI

WSSS AD 2.6 RESCUE AND FIRE FIGHTING SERVICES	
AD category for fire fighting	<u>For RWY 02R/20L</u> CAT 8 (No facilities for foaming of runways)

WSSS AD 2.8 APRONS, TAXIWAYS AND CHECK LOCATIONS/POSITIONS DATA	
Apron surface and strength	<u>RWY 02R/20L</u> Apron A: Concrete surface, strength PCR 760/R/A/W/T. Apron D: Concrete surface, strength PCR 703/R/B/W/U.
Taxiway width, surface and strength	<u>RWY 02R/20L</u> Width 23m (75.5ft) for MY TWY and RETs MY2, MY3, MY4, MY5, MY6 and MY8. 50m (164.0ft) for perpendicular TWYs MY1, MY7, MY9 and MY10. Asphalt surface, strength PCR 573/F/B/X/U. TWY and access to the west of RWY 02R/20L are closed

### WSSS AD 2.9 SURFACE MOVEMENT GUIDANCE AND CONTROL SYSTEM AND MARKINGS

RWY and TWY markings and LGT

#### RWY 02R/20L

MY TWY LGT: Blue lights on TWY curved edges and straight TWY edge sections. Red stop bar lights at TWY INT are controllable on/off. Red stop bar lights at Pattern "A" RWY HLDG PSN entrances to RWY are controllable on/off and are supplemented with elevated RWY guard lights and RWY designation sign at the sides. Red stop bar lights at Pattern "B" RWY HLDG PSN before entry into the RWY ILS sensitive area are controllable on/off with Category I/II RWY HLDG PSN sign.

On the west and east of RWY 02R/20L, no taxiway centreline lights.

MARKING AIDS: THR, touchdown zone, RWY centreline, RWY side stripe, RWY designations, aiming point markings, TWY centerline for East of RWY 02R/20L only, taxi holding positions – all taxiways, apron markings. The yellow hookwire markings on the RWY are done in accordance with the Federal Aviation Administration (FAA) requirements. The eastern edge Distance-To-Go marker boards are done with reference to the FAA specifications.

### WSSS AD 2.10 AERODROME OBSTACLES

#### IN CIRCLING AREA AND AT AERODROME

Obstacles type, ELEV, Markings/LGT	Location of Obstacles
1	2
PAR installation. HGT 56ft AMSL, marked and LGTD.	012029N 1040033E
Lightning Protection Mast, 40ft AGL marked and LGTD.	Two Lightning Protection Mast, located adjacent to PAR installation
Frangible PAR Moving Target Indicator (MTI) reflectors, HGT 32ft AMSL.	RWY 02R reflectors, located 129m east of centreline of RWY, 1230m from RWY 02R THR. RWY 20L reflectors, located 129m east of centreline of RWY, 480m from RWY 20L THR.
Arrestor hookwire, Concrete Ramp, HGT 2.1ft AMSL (Concrete areas).	Within RWY strip, 500m from RWY 02R THR and 500m from RWY 20L THR
Frangible huts for Bird Scaring Acoustic Devices, HGT 7ft AMSL	One located adjacent to RWY 02R GP antenna One located adjacent to PAR installation One located adjacent to RWY 20L GP antenna

### WSSS AD 2.13 DECLARED DISTANCES

RWY Designator	Intersection Departures	TORA (m)	TODA (m)	ASDA (m)	LDA (m)	Remarks
1	2	3	4	5	6	7
20L	Full Length	4000	4060	4060	4000	NIL
	MY2	3170	3230	3230	3170	
	MY3	2710	2770	2770	2710	
	MY4	2360	2420	2420	2360	
02R	Full Length	4000	4060	4060	4000	NIL
	MY9	3440	3500	3500	3440	
	MY8	2900	2960	2960	2900	
	MY7	2590	2650	2650	2590	
	MY6	2220	2280	2280	2220	
	MY5	1770	1830	1830	1770	

### WSSS AD 2.15 OTHER LIGHTING, SECONDARY POWER SUPPLY

TWY Edge and Centreline Lighting RWY 02R/20L: Blue lights on TWY edge

### WSSS AD 2.18 ATS COMMUNICATION FACILITIES

Service Designation	Call Sign	Frequency (P-Pri, S-Sec)	Hours of operation	Remarks
---------------------	-----------	--------------------------	--------------------	---------

WSSS AD 2.18 ATS COMMUNICATION FACILITIES				
TWR	Changi East Tower	122.25 MHz	2300-1100 SUN/MON to THU/FRI.	For TKOF/LDG. For ACFT operating on RWY 02R/ 20L
	Changi East Ground	120.95 MHz		For start-up / taxiing of all aircraft.
ATIS	Changi East Information (02R/20L)	139.95 MHz		-

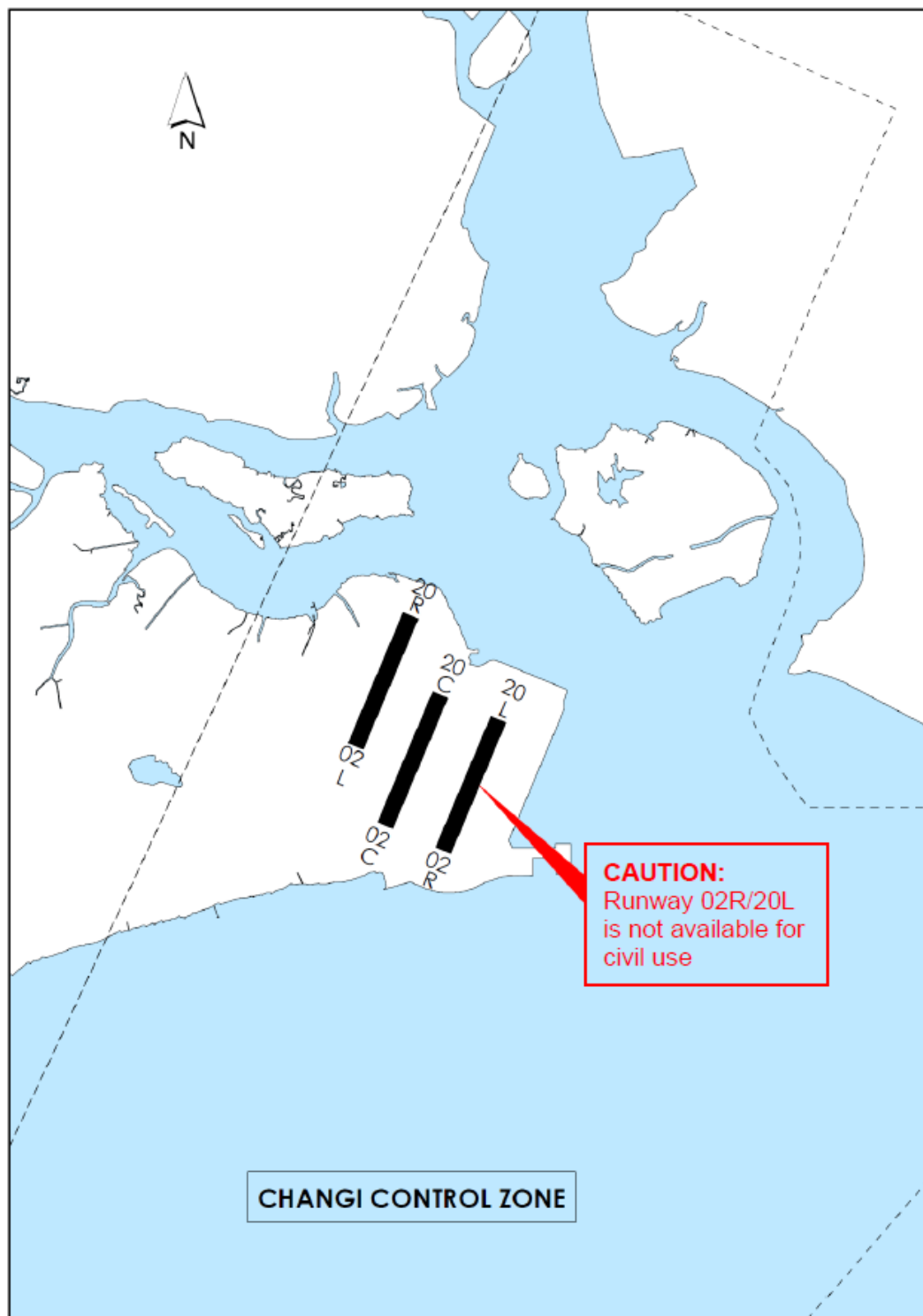
### 3 CHANGES

3.1 Any change to the contents of this AIRAC AIP Supplement will be notified through NOTAM.

LOCATIONS OF RUNWAY 02L/20R, RUNWAY 02C/20C AND RUNWAY 02R/20L AT WSSS - Annex A

Intentionally Left Blank

**LOCATIONS OF RUNWAY 02L/20R, RUNWAY 02C/20C AND RUNWAY  
02R/20L AT WSSS**



Publication Date: 08 January 2026

Effective Date: 19 February 2026

Intentionally Left Blank