

Contact
Post: REPUBLIC OF SINGAPORE
AERONAUTICAL INFORMATION SERVICES
Civil Aviation Authority of Singapore
60 Airport Boulevard,
Changi Airport Terminal 2, #04-01
Singapore 819643

Tel: (65) 6955 0400
Fax: (65) 6441 0221
AFS: WSSSYNYX
Email: caas_singaporeais@caas.gov.sg
URL: <https://www.caas.gov.sg>
URL: <https://aim-sg.caas.gov.sg>

**AIP Supplement for
Singapore**


Civil Aviation Authority of Singapore

**AIRAC AIP SUP
134/2025**

Effective from
02 OCT 2025
to
14 MAY 2026
Published on
21 AUG 2025

SINGAPORE CHANGI AIRPORT – TEMPORARY CLOSURE OF TAXILANE N4 BEHIND AIRCRAFT STAND 604 AND DOWNGRADE OF AIRCRAFT STAND 603 TO CODE C

1 INTRODUCTION

1.1 This AIRAC AIP Supplement is to inform airline operators and pilots that due to extended work activities at East Cargo Apron in Singapore Changi Airport Taxilane N4 behind aircraft stand 604 will be temporarily closed and adjacent aircraft stand 603 will be downgraded to Code C for the period tabulated below:

Taxilane / Aircraft Stand	Period	Chart
Closure of Taxilane N4 behind Stand 604	From 02 October 2025, 1100 UTC To 14 May 2026, 1100 UTC	Annex A
Aircraft stand 603 downgrading to Code C		

2 DETAILS ON THE CLOSURE OF TAXILANE N4 BEHIND AIRCRAFT STAND 604

- 2.1 Ground markings leading into the closed section of Taxilane N4 will be removed, and taxiway guidance signs will be masked out.
- 2.2 Centreline lights and edge lights leading into and within the closed area will be masked out or isolated.
- 2.3 Temporary ground markings such as:
- i) Taxilane side stripe markings (double yellow line) and blue reflective taxilane edge markers will be provided to demarcate the edge of usable taxilane.
 - ii) Taxilane closed markers (yellow crosses) will be provided to demarcate the closed part of Taxilane N4 behind aircraft stand 604.
- 2.4 Unserviceability lights and markers (marker boards) will be placed across the breadth of the closed taxilane.
- 2.5 Due to the temporary closure, changes in aircraft pushback procedures will be implemented at East Cargo Apron. Pilots are to pay extra attention to ATC instructions when taxiing in the vicinity of the work area.
- 2.6 Please refer to **Annex A** for the enlarged location plan of Taxilane N4 at East Cargo Apron and **Annex B** for a visualisation of the closed section of Taxilane N4 behind aircraft stand 604.

3 CHANGES

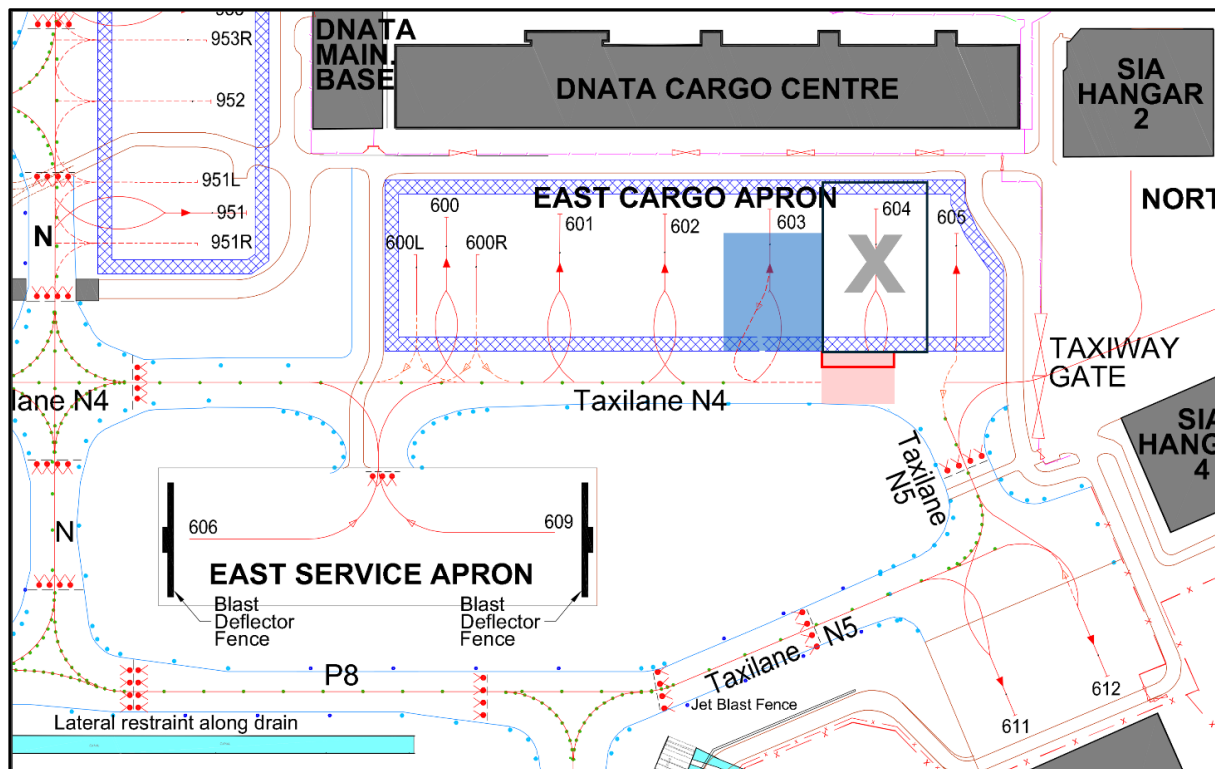
- 3.1 This AIRAC AIP Supplement will supersede AIRAC AIP Supplement 134/2024 dated 30 August 2024.
- 3.2 Any change to the contents of this AIP Supplement will be notified through NOTAM.

Enlarged Location Plan of Closed Section of Taxilane N4 - Annex A

Visualisation of Taxilane N4 Closure - Annex B

Intentionally Left Blank

Enlarged Location Plan of closed Section of Taxilane N4 behind Aircraft Stand 604, and Downgrade of Aircraft Stand 603 to Code C, Singapore Changi Airport



Legend

- Taxilane N4 behind Aircraft Stand 604 closed
- Work Area
- Aircraft Stand 603 downgraded to Code C

Publication date: 21 Aug 2025
Effective date: 02 Oct 2025

Intentionally Left Blank

Visualisation of Taxilane N4 closure behind Aircraft Stand 604, Singapore Changi Airport

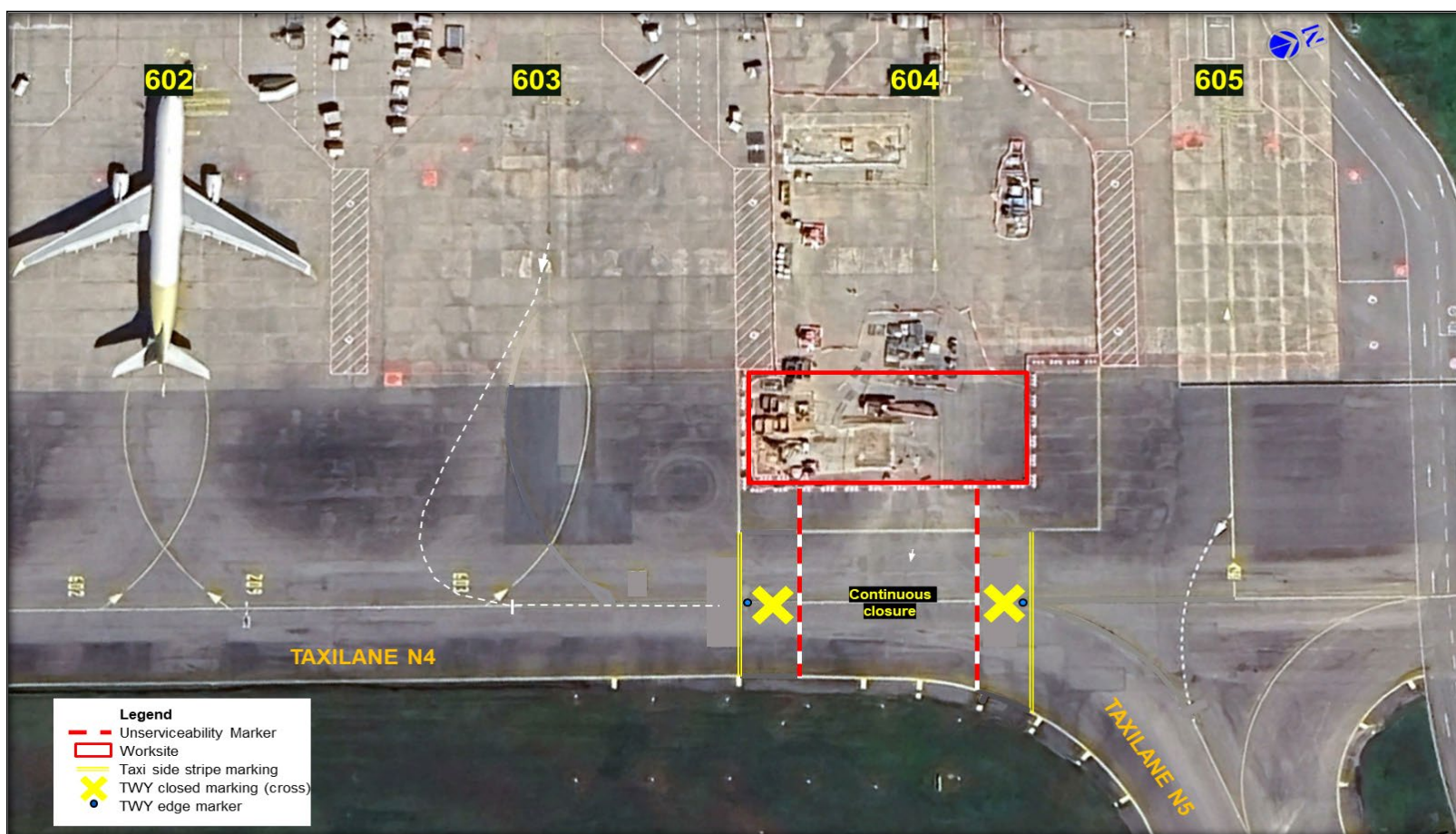


Diagram not to scale & for illustration only.

Publication date: 21 Aug 2025
Effective date: 02 Oct 2025

Intentionally Left Blank