

Contact

Post:

REPUBLIC OF SINGAPORE
AERONAUTICAL
INFORMATION SERVICES
CIVIL AVIATION AUTHORITY
OF SINGAPORE
SINGAPORE CHANGI
AIRPORT
P.O. BOX 1, SINGAPORE
918141

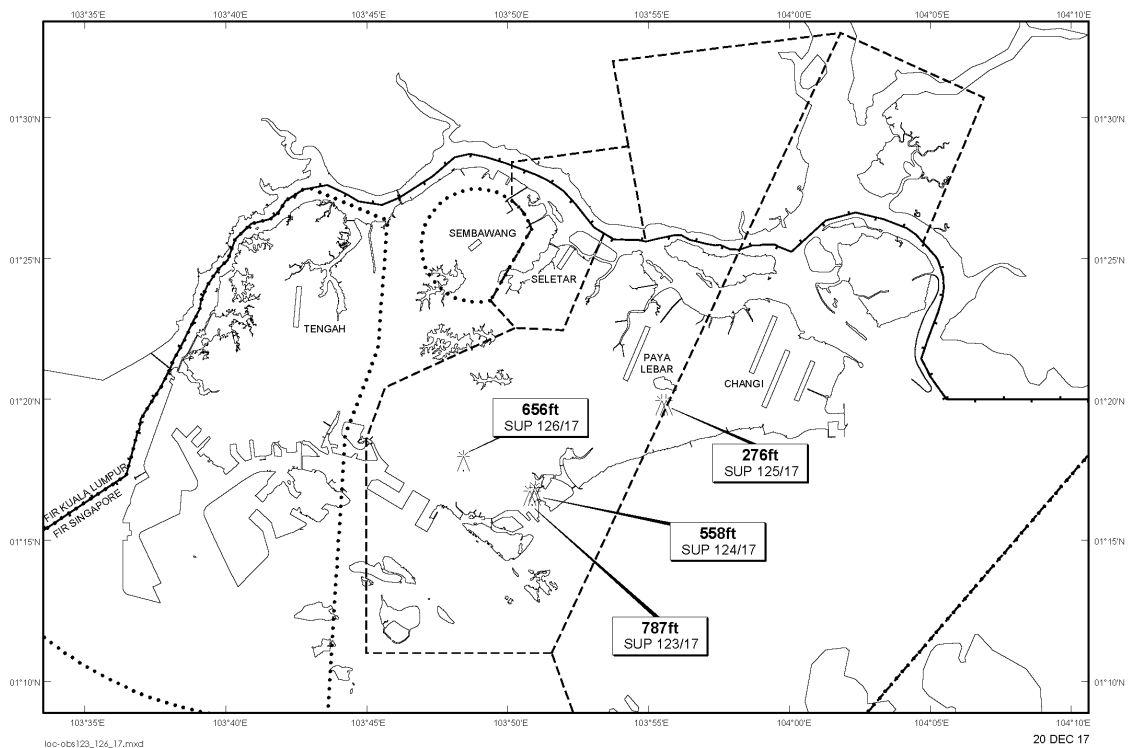
Tel: (65) 6595 6051

AFS: WSSSYNYX

Fax: (65) 64410221

Email: caas_singaporeais@caas.gov.sgURL: www.caas.gov.sgURL: <https://fpl-1.caasaim.gov.sg>**AIP Supplement for
Singapore****AIP SUP
123/2017****Effective from 20 DEC 2017****/ 31 DEC 2020****Published on 20 DEC 2017****PAYA LEBAR AIRPORT – LUFFER CRANES**

WIE/2012311559 three luffer cranes, height 787ft AMSL, erected at 011636N 1035052E (bearing 214.9 degrees, distance 5.8nm from Paya Lebar ARP - within Paya Lebar Control Zone). Luffer cranes marked and lighted at night. (NOTAM A3805/17 dated 06/12/17 is hereby superseded.)

LOCATION OF OBSTACLES

PAGE INTENTIONALLY LEFT BLANK