

Contact

Post:

REPUBLIC OF SINGAPORE
AERONAUTICAL
INFORMATION SERVICES
CIVIL AVIATION AUTHORITY
OF SINGAPORE
SINGAPORE CHANGI
AIRPORT
P.O. BOX 1, SINGAPORE
918141

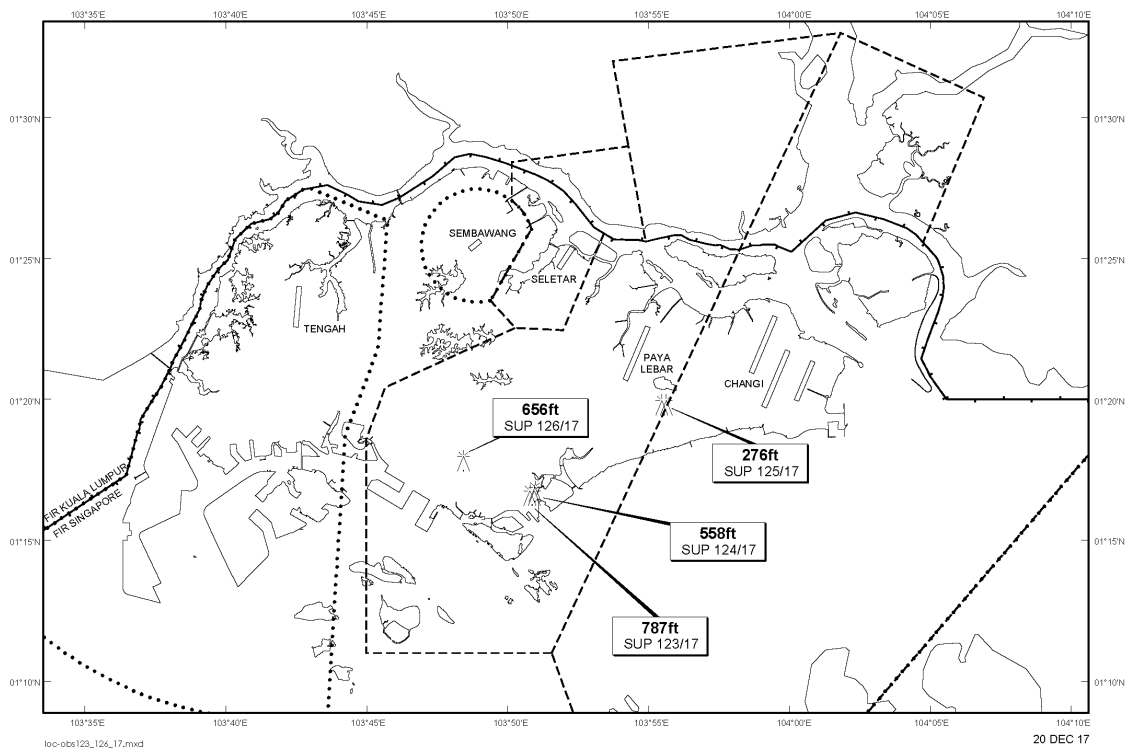
Tel: (65) 6595 6051

AFS: WSSSYNYX

Fax: (65) 64410221

Email: caas_singaporeais@caas.gov.sgURL: www.caas.gov.sgURL: <https://fpl-1.caasaim.gov.sg>**AIP Supplement for
Singapore****AIP SUP
126/2017****Effective from 20 DEC 2017****/ 19 DEC 2019****Published on 20 DEC 2017****PAYA LEBAR AIRPORT – LUFFER CRANE**

WIE/1912191559 one luffer crane, height 656ft AMSL, erected at 011749N 1034826E (bearing 238.3 degrees, distance 6.7nm from Paya Lebar ARP - within Paya Lebar Control Zone). Luffer crane marked and lighted at night. (NOTAM A3989/17 dated 19/12/17 is hereby superseded.)

LOCATION OF OBSTACLES

PAGE INTENTIONALLY LEFT BLANK