

**Contact**

Post:

REPUBLIC OF SINGAPORE  
AERONAUTICAL  
INFORMATION SERVICES  
CIVIL AVIATION AUTHORITY  
OF SINGAPORE  
SINGAPORE CHANGI  
AIRPORT  
P.O. BOX 1, SINGAPORE  
918141

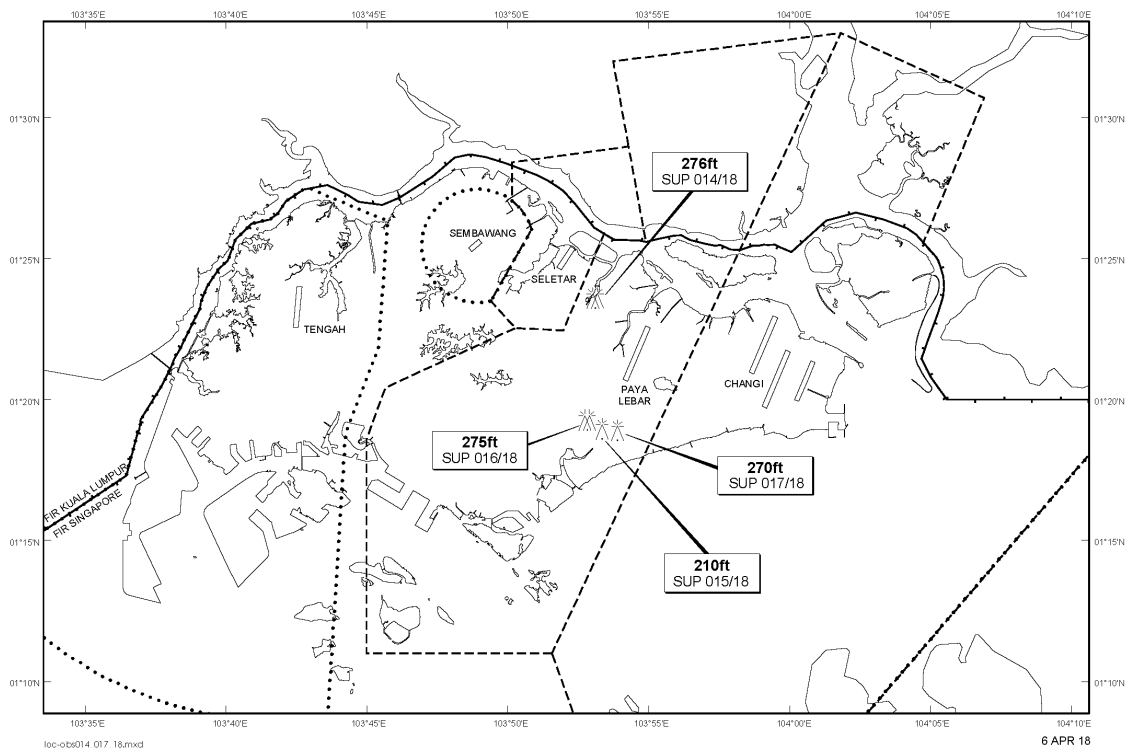
Tel: (65) 6595 6051

AFS: WSSSYNYX

Fax: (65) 64410221

Email: [caas\\_singaporeais@caas.gov.sg](mailto:caas_singaporeais@caas.gov.sg)URL: [www.caas.gov.sg](http://www.caas.gov.sg)URL: <https://fpl-1.caasaim.gov.sg>**AIP Supplement for  
Singapore****AIP SUP  
016/2018****Effective from 06 APR 2018****/ 01 JAN 2020****Published on 06 APR 2018****PAYA LEBAR AIRPORT – LUFFER CRANE AND TOPLESS CRANES**

WIE/2001011559 one luffer crane and two topless cranes, height 275ft AMSL, erected at 011916N 1035249E (bearing 213.1 degrees, distance 2.5nm from Paya Lebar ARP - within Paya Lebar Control Zone). Luffer crane and topless cranes marked and lighted at night. (NOTAM A4139/17 dated 29/12/17 is hereby superseded.)

**LOCATION OF OBSTACLES**

*PAGE INTENTIONALLY LEFT BLANK*