

Contact

Post:

REPUBLIC OF SINGAPORE
AERONAUTICAL
INFORMATION SERVICES
CIVIL AVIATION AUTHORITY
OF SINGAPORE
SINGAPORE CHANGI
AIRPORT
P.O. BOX 1, SINGAPORE
918141

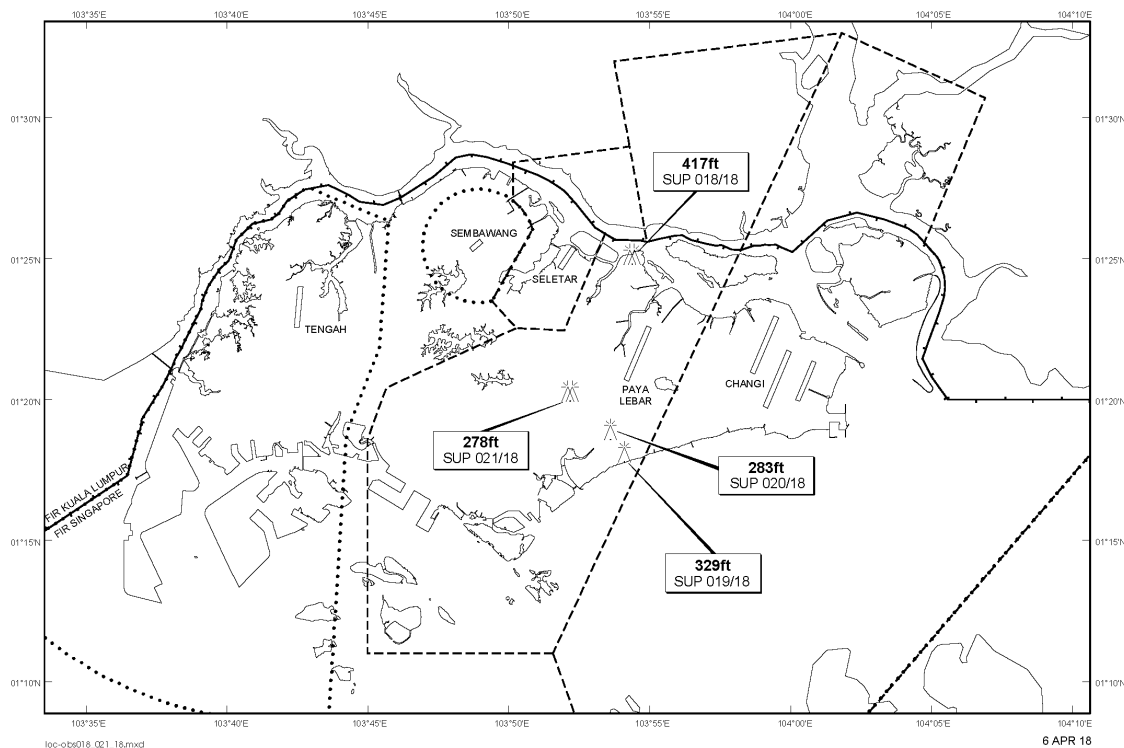
Tel: (65) 6595 6051

AFS: WSSSYNYX

Fax: (65) 64410221

Email: caas_singaporeais@caas.gov.sgURL: www.caas.gov.sgURL: <https://fpl-1.caasaim.gov.sg>**AIP Supplement for
Singapore****AIP SUP
018/2018****Effective from 25 APR 2018****/ 27 OCT 2020****Published on 06 APR 2018****PAYA LEBAR AIRPORT – TOPLESS CRANES AND LUFFER CRANE**

With effect from 1804251600 until 2010271559 seven topless cranes and one luffer crane, height 417ft AMSL, erected at 012509N 1035422E (bearing 2.9 degrees, distance 3.8nm from Paya Lebar ARP - within Paya Lebar Control Zone). Topless cranes and luffer crane marked and lighted at night. (NOTAM A1202/18 dated 29/03/18 is hereby superseded.)

LOCATION OF OBSTACLES

PAGE INTENTIONALLY LEFT BLANK