

Contact

Post:

REPUBLIC OF SINGAPORE
AERONAUTICAL
INFORMATION SERVICES
CIVIL AVIATION AUTHORITY
OF SINGAPORE
SINGAPORE CHANGI
AIRPORT
P.O. BOX 1, SINGAPORE
918141

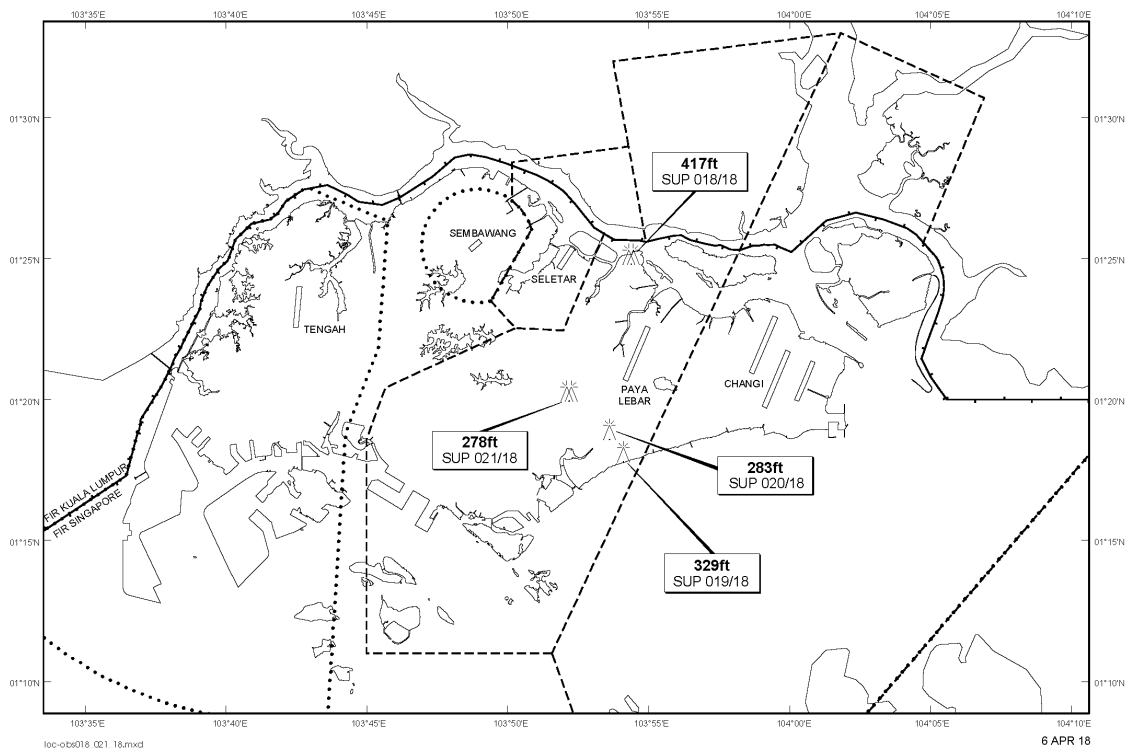
Tel: (65) 6595 6051

AFS: WSSSYNYX

Fax: (65) 64410221

Email: caas_singaporeais@caas.gov.sgURL: www.caas.gov.sgURL: <https://fpl-1.caasaim.gov.sg>**AIP Supplement for
Singapore****AIP SUP
021/2018****Effective from 06 APR 2018****/ 31 DEC 2022****Published on 06 APR 2018****PAYA LEBAR AIRPORT – LUFFER CRANE AND SADDLE CRANES**

WIE/2212311559 one luffer crane and three saddle cranes, height 278ft AMSL, erected at 012018N 1035210E (bearing 242.6 degrees, distance 2.3nm from Paya Lebar ARP - within Paya Lebar Control Zone). Luffer crane and saddle cranes marked and lighted at night. (NOTAM A1010/18 dated 13/03/18 is hereby superseded.)

LOCATION OF OBSTACLES

PAGE INTENTIONALLY LEFT BLANK