

Contact

Post:

REPUBLIC OF SINGAPORE
AERONAUTICAL
INFORMATION SERVICES
CIVIL AVIATION AUTHORITY
OF SINGAPORE
SINGAPORE CHANGI
AIRPORT
P.O. BOX 1, SINGAPORE
918141

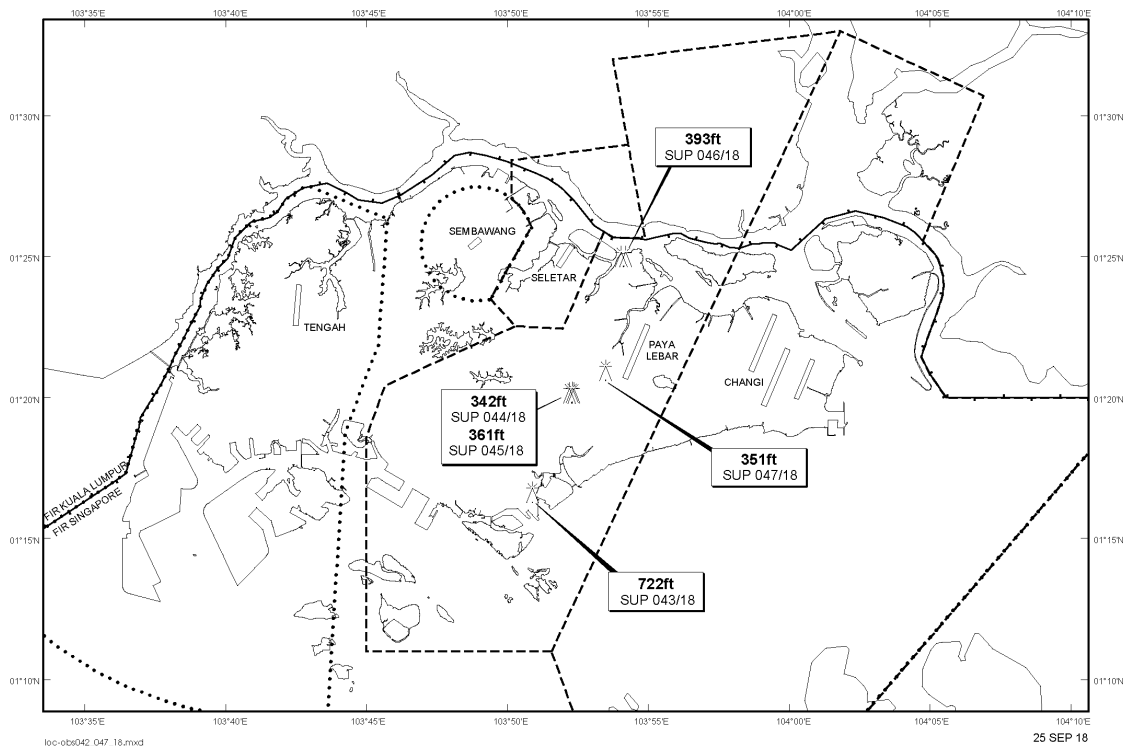
Tel: (65) 6595 6051

AFS: WSSSYNYX

Fax: (65) 64410221

Email: caas_singaporeais@caas.gov.sgURL: www.caas.gov.sgURL: <https://fpl-1.caasaim.gov.sg>**AIP Supplement for
Singapore****AIP SUP
044/2018****Effective from 25 SEP 2018****/ 31 DEC 2018****Published on 25 SEP 2018****PAYA LEBAR AIRPORT – MOBILE CRANE**

WIE/1812311559 one mobile crane, height 342ft AMSL, erected at 012011N 1035218E (bearing 238.2 degrees, distance 2.2nm from Paya Lebar ARP - within Paya Lebar Control Zone). Mobile crane marked and lighted at night. (NOTAM A2680/18 dated 16/07/18 is hereby superseded.)

LOCATION OF OBSTACLES

PAGE INTENTIONALLY LEFT BLANK