

**Contact**

Post:

REPUBLIC OF SINGAPORE  
AERONAUTICAL  
INFORMATION SERVICES  
CIVIL AVIATION AUTHORITY  
OF SINGAPORE  
SINGAPORE CHANGI  
AIRPORT  
P.O. BOX 1, SINGAPORE  
918141

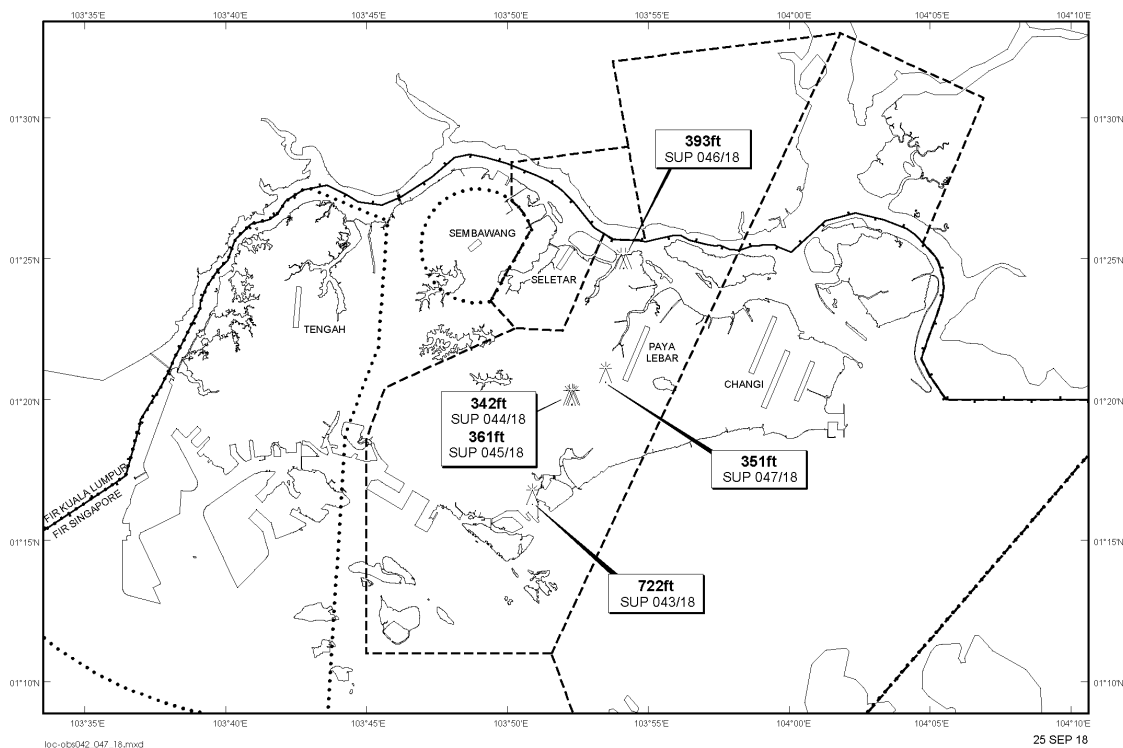
Tel: (65) 6595 6051

AFS: WSSSYNYX

Fax: (65) 64410221

Email: [caas\\_singaporeais@caas.gov.sg](mailto:caas_singaporeais@caas.gov.sg)URL: [www.caas.gov.sg](http://www.caas.gov.sg)URL: <https://fpl-1.caasaim.gov.sg>**AIP Supplement for  
Singapore****AIP SUP  
047/2018****Effective from 25 SEP 2018****/ 31 DEC 2018****Published on 25 SEP 2018****PAYA LEBAR AIRPORT – MOBILE CRANE**

WIE/1812311559 one mobile crane, height 351ft AMSL, erected at 012058N 1035329E (bearing 240.8 degrees, distance 0.8nm from Paya Lebar ARP - within Paya Lebar Control Zone). Mobile crane marked and lighted at night. (NOTAM A3401/18 dated 31/08/18 is hereby superseded.)

**LOCATION OF OBSTACLES**

*PAGE INTENTIONALLY LEFT BLANK*