

Contact

Post:

REPUBLIC OF SINGAPORE
AERONAUTICAL
INFORMATION SERVICES
CIVIL AVIATION AUTHORITY
OF SINGAPORE
SINGAPORE CHANGI
AIRPORT
P.O. BOX 1, SINGAPORE
918141

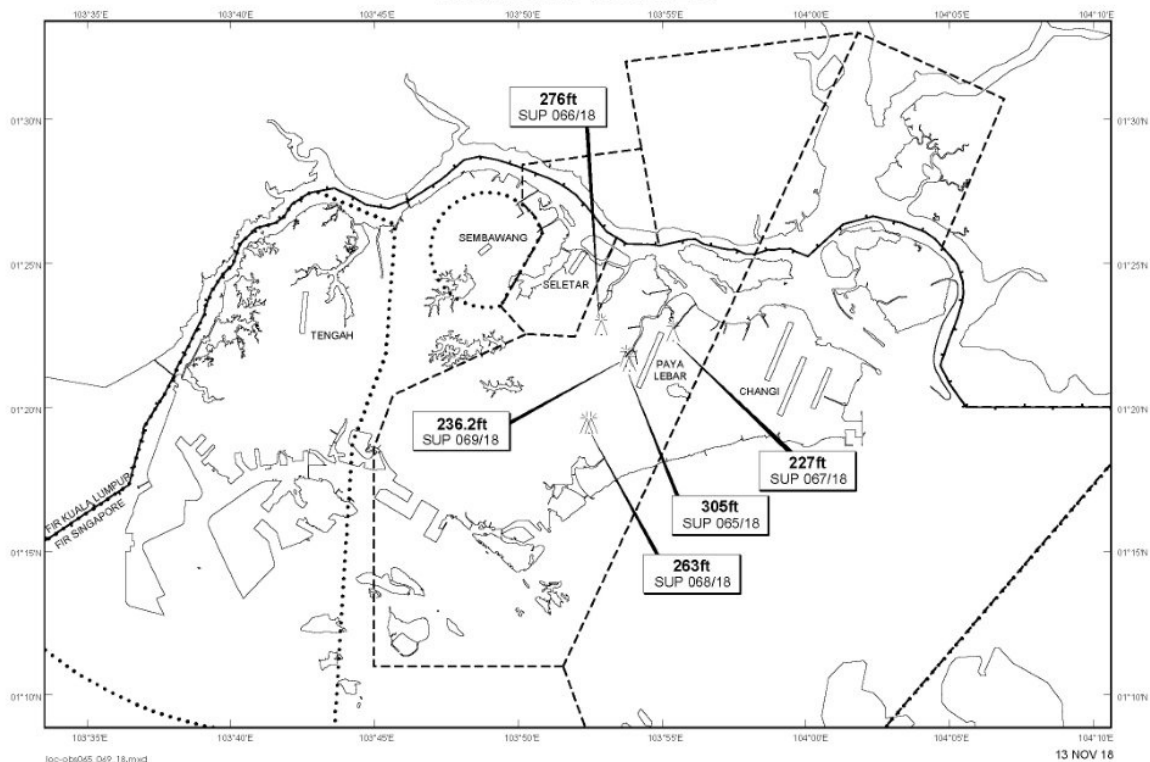
Tel: (65) 6595 6051

AFS: WSSSYNYX

Fax: (65) 64410221

Email: caas_singaporeais@caas.gov.sgURL: www.caas.gov.sgURL: <https://fpl-1.caasaim.gov.sg>**AIP Supplement for
Singapore****AIP SUP
066/2018****Effective from 18 NOV 2018****/ 28 FEB 2019****Published on 13 NOV 2018****PAYA LEBAR AIRPORT – MOBILE CRANE**

With effect from 1811181600 until 1902281559 one mobile crane, height 276ft AMSL, erected at 012252N 1035253E (bearing 319.8 degrees, distance 2nm from Paya Lebar ARP - within Paya Lebar Control Zone). Mobile crane marked and lighted at night. (NOTAM A4336/18 dated 02/11/18 is hereby superseded.)

LOCATION OF OBSTACLES

PAGE INTENTIONALLY LEFT BLANK