

**Contact**

Post:

REPUBLIC OF SINGAPORE  
AERONAUTICAL  
INFORMATION SERVICES  
CIVIL AVIATION AUTHORITY  
OF SINGAPORE  
SINGAPORE CHANGI  
AIRPORT  
P.O. BOX 1, SINGAPORE  
918141

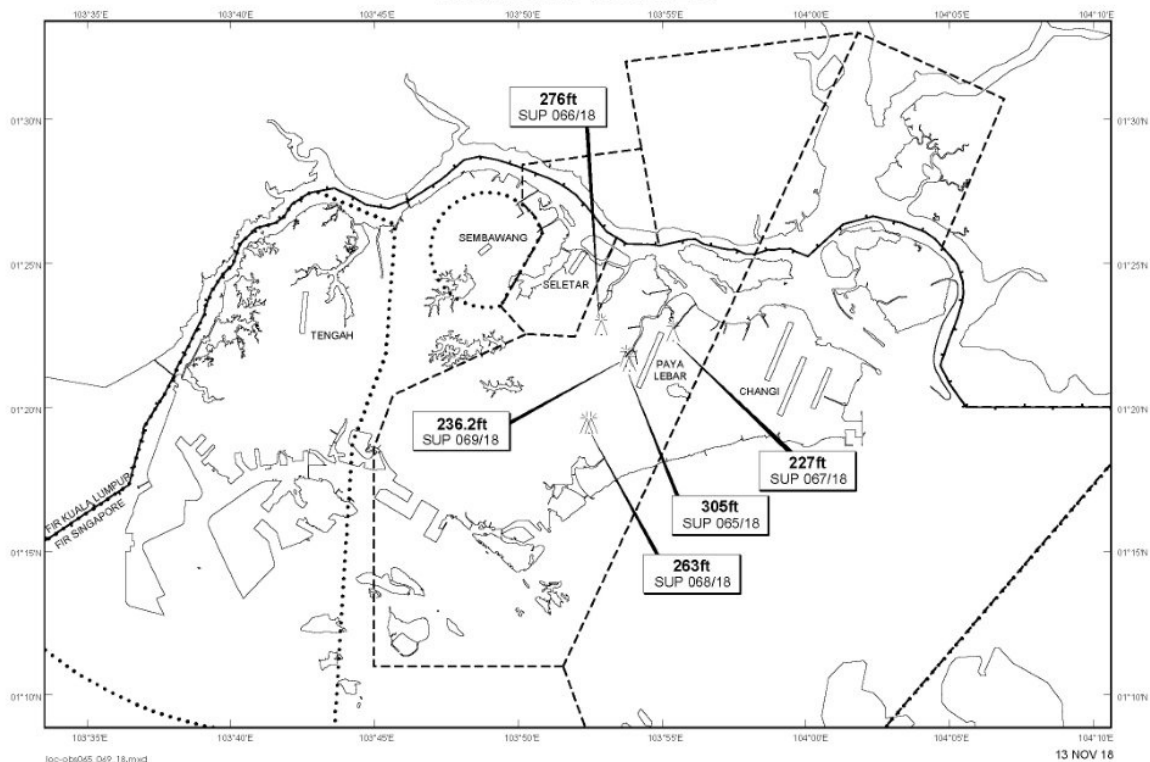
Tel: (65) 6595 6051

AFS: WSSSYNYX

Fax: (65) 64410221

Email: [caas\\_singaporeais@caas.gov.sg](mailto:caas_singaporeais@caas.gov.sg)URL: [www.caas.gov.sg](http://www.caas.gov.sg)URL: <https://fpl-1.caasaim.gov.sg>**AIP Supplement for  
Singapore****AIP SUP  
067/2018****Effective from 13 NOV 2018****/ 30 MAR 2019****Published on 13 NOV 2018****PAYA LEBAR AIRPORT – CRAWLER CRANE**

WIE/1903301559 one crawler crane, height 227ft AMSL, erected at 012239N 1035523E (bearing 42.8 degrees, distance 1.8nm from Paya Lebar ARP - within Paya Lebar Control Zone). Crawler crane marked and lighted at night. (NOTAM A3802/18 dated 27/09/18 is hereby superseded.)

**LOCATION OF OBSTACLES**

*PAGE INTENTIONALLY LEFT BLANK*